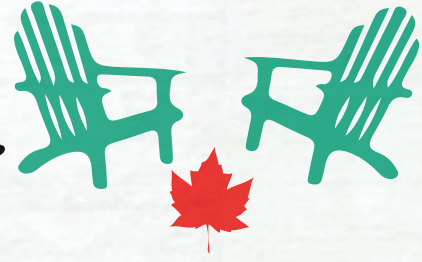


Canadian Cabin



SHELTER
HOME SYSTEMS

Model Specifications

(3 Season Park Models, Z241)

Standard Construction

- ⇒ Coloured Metal Fascia (White - if no colour is selected)
- ⇒ Low Maintenance Vinyl Siding
- ⇒ Nominal 7/12 Roof Pitch, 4/12 Interior Pitch
- ⇒ 8' Sidewall
- ⇒ Exterior GFI receptacle – front door
- ⇒ Exterior Frost-Free Tap – Kitchen Sink
- ⇒ Limited Lifetime Architectural Shingles w/ Underlayment
- ⇒ 7/16" roof sheathing
- ⇒ 12" Fixed Eave Overhang on All Sides
- ⇒ Heat Tape Receptacle at Water Heater
- ⇒ Engineered Roof Trusses
- ⇒ 2x6 Floor Joists @ 16" o.c. (12' wides)
- ⇒ 2x8 Floor Joists @ 16" o.c. (14' wides)
- ⇒ 2x4 Exterior Walls @ 24" o.c.
- ⇒ 3/8" OSB Sheathing on Inside Of Exterior Walls
- ⇒ 19/32" Floor Decking – Screwed and Glued
- ⇒ Insulation: R20 ceiling; R12 walls; R20 floor
- ⇒ 12" Tubular Laminated Steel Frame
- ⇒ Weatherproof Outside GFI Receptacle
- ⇒ Windows (1.4 U-Value | PVC Jamb | LowE | w/ Screen):
 - Window sizes as shown on standard blackline
 - 24x30 Obscured In Bathroom
- ⇒ 36" Insulated Exterior No Light Front Door c/w peephole & Pot Light
- ⇒ 32" Insulated Exterior No Light Door or Patio Door as shown on std.
- ⇒ 6' Patio Door In select floorplans

Bath

- ⇒ Tub/Shower: One Piece Fiberglass OR 48" Shower
- ⇒ Sink: White Oval, Drop In w/Single Lever Faucet - Chrome
- ⇒ Toilet: Single Flush, Lined Tank, White
- ⇒ Shower Rod and Curtain Liner in all Bathrooms
- ⇒ Chrome Towel Ring and Paper Holder
- ⇒ GFI Receptacles
- ⇒ Dehumidistat on Main Bath Fan
- ⇒ 3 Globe Light Fixture Above Vanity
- ⇒ Exhaust Fan

Kitchen

- ⇒ Fridge: 18 CU. FT. Two Door - Top Freezer - White
- ⇒ Range: 30" Gas - White
- ⇒ Range Hood: Two Speed, Vented To Exterior, White
- ⇒ Sink: Two Bowl Stainless Steel
- ⇒ Single Lever Faucet w/Sprayer - Chrome

Interior Finish

- ⇒ Cathedral Ceiling Throughout
- ⇒ Spraytex 1/2" Gyproc Ceilings
- ⇒ Linoleum Flooring Throughout
- ⇒ Pre-finished White Embossed Interior Doors w/Lever Handles
- ⇒ Decora Receptacles & Switches
- ⇒ Solid Closet Shelving
- ⇒ Ceiling Trim: 451 Cove Profile White
- ⇒ Baseboards: 356 Profile White
- ⇒ Window/Door Trim: 356 Profile White
- ⇒ Closets: Battens Throughout
- ⇒ Wall Finish: Decorative Vinyl Over Gyproc (VOG)
- ⇒ Battens On VOG Joints
- ⇒ Modular Cabinets w/Roller Drawer Hardware
- ⇒ PVC Wrap Cabinet Doors w/Pewter Knobs
- ⇒ Cabinet Crown Moulding: 510 Profile
- ⇒ 3" White Subway Tile Backsplash (White Grout)
- ⇒ Laminated Countertop

Utilities

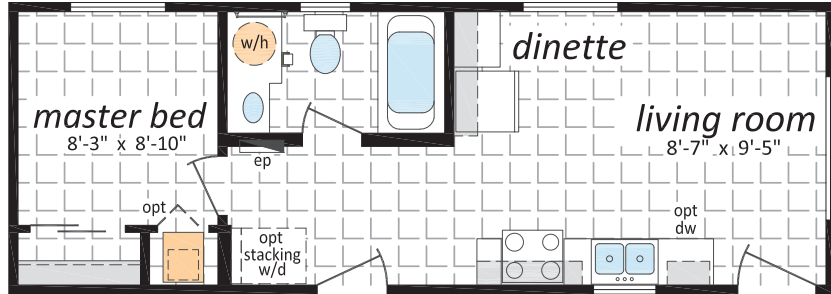
- ⇒ 30 GL Electric Water Heater
- ⇒ High Efficiency Natural Gas Furnace - Convertible
- ⇒ Propane Line Front and Rear w/Regulator
- ⇒ 50 Amp Electrical Service with 25' Cord
- ⇒ Two Phone/Cable Boxes
- ⇒ Smoke/CO Alarms w/Battery Back Up In Hallways
- ⇒ Smoke Alarms In All Bedrooms
- ⇒ Shut Off Valves On All Fixtures
- ⇒ Plumbed & Wired For Stacking Washer And Dryer
- ⇒ Copper Wiring Throughout
- ⇒ LED Light Bulb Package

Canadian Cabin

CB-12341

12' x 34' 408 sq. ft.

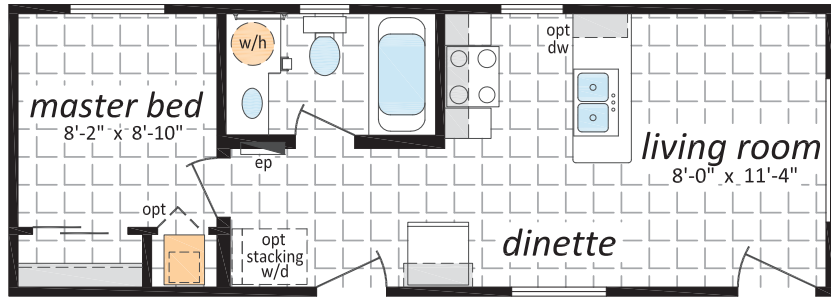
1 Bed, 1 Bath



CB-12342

12' x 34' 408 sq. ft.

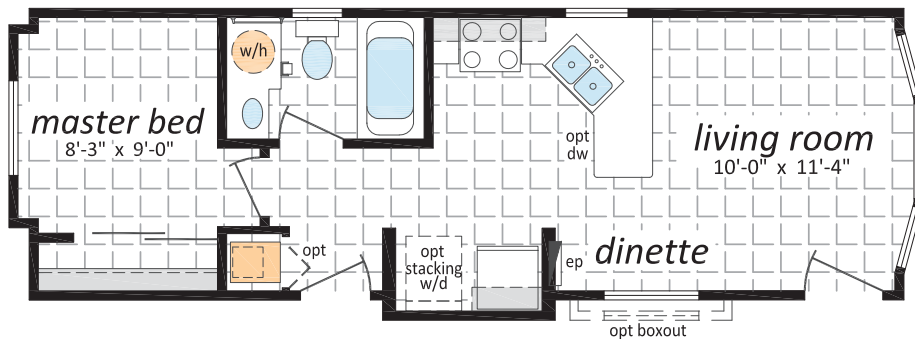
1 Bed, 1 Bath



CB-12361

12' x 36' 432 sq. ft.

1 Bed, 1 Bath

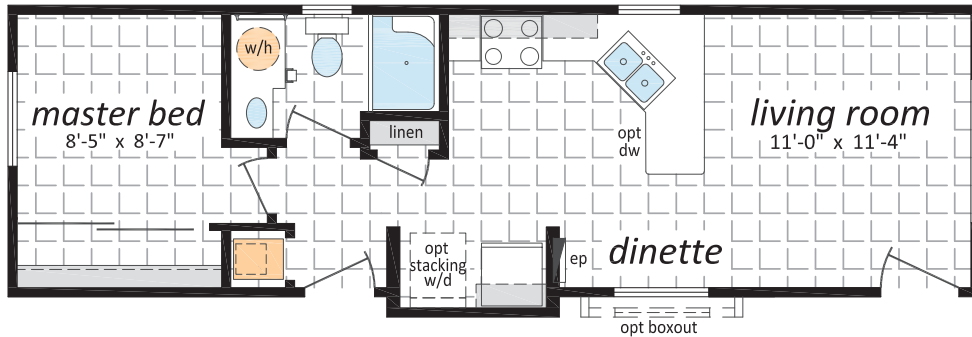


Canadian Cabin

CB-12401

12' x 40' 480 sq. ft.

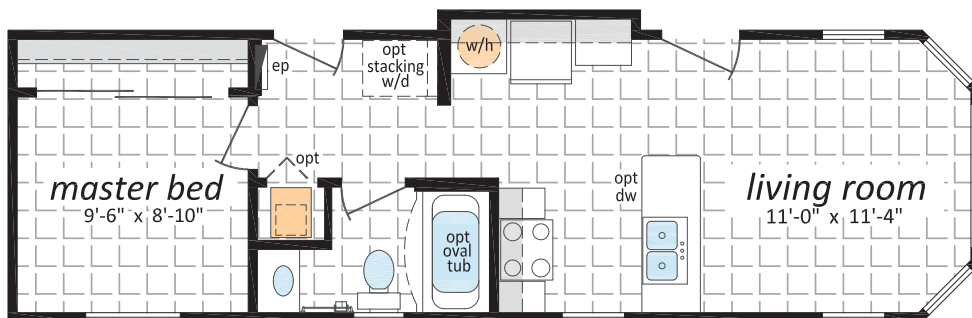
1 Bed, 1 Bath



CB-12402

12' x 40' 480 sq. ft.

1 Bed, 1 Bath

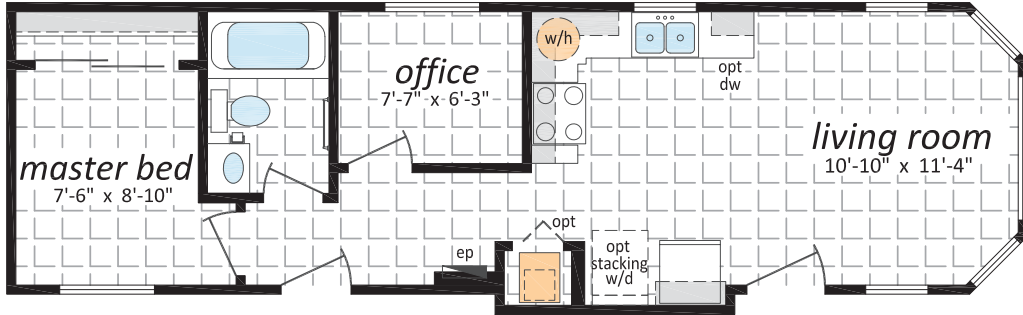


Canadian Cabin

CB-12421

12' x 42' 504 sq. ft.

1 Bed, 1 Bath, Office



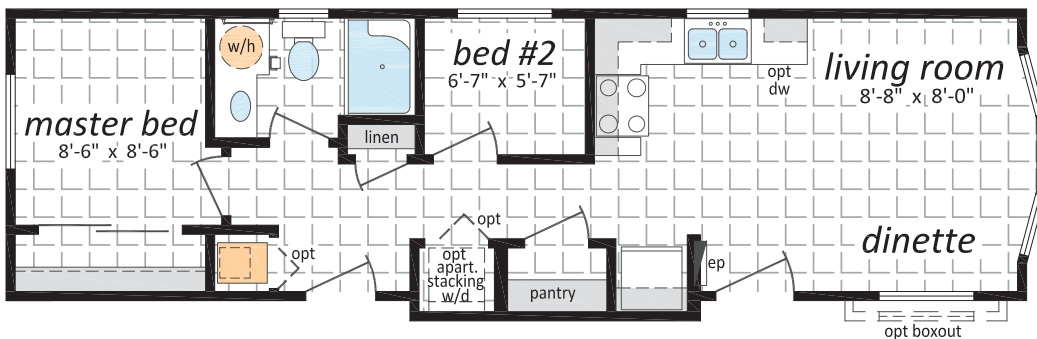
CB-12422

12' x 42' 504 sq. ft.

2 Beds, 1 Bath



Artist Rendering; may show optional features

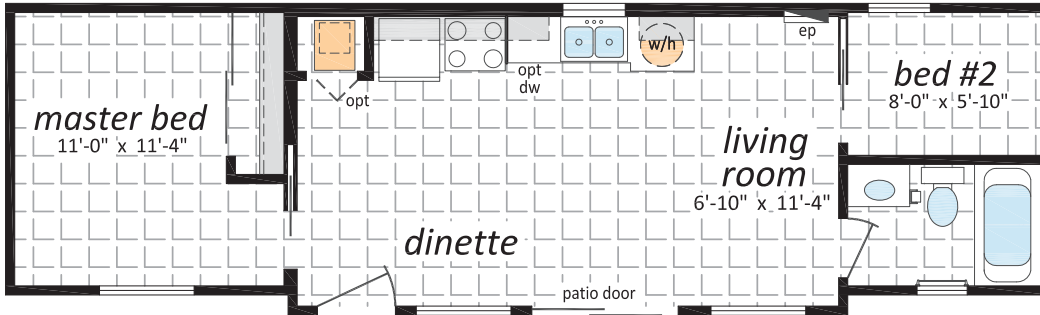


Canadian Cabin

CB-12431

12' x 43' 516 sq. ft.

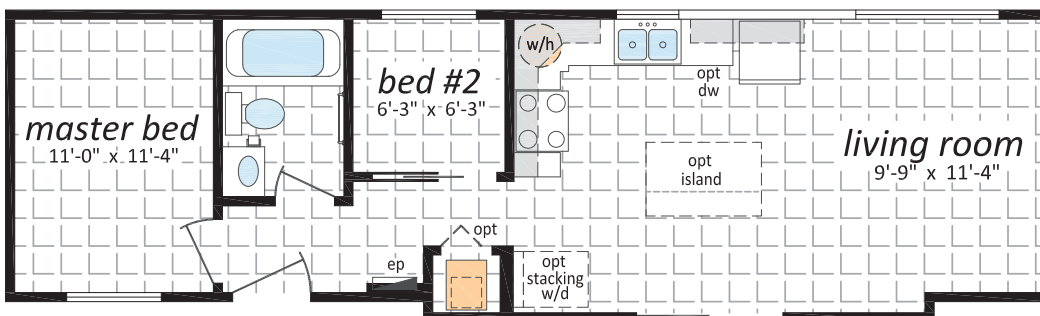
2 Beds, 1 Bath



CB-12432

12' x 43' 516 sq. ft.

2 Beds, 1 Bath

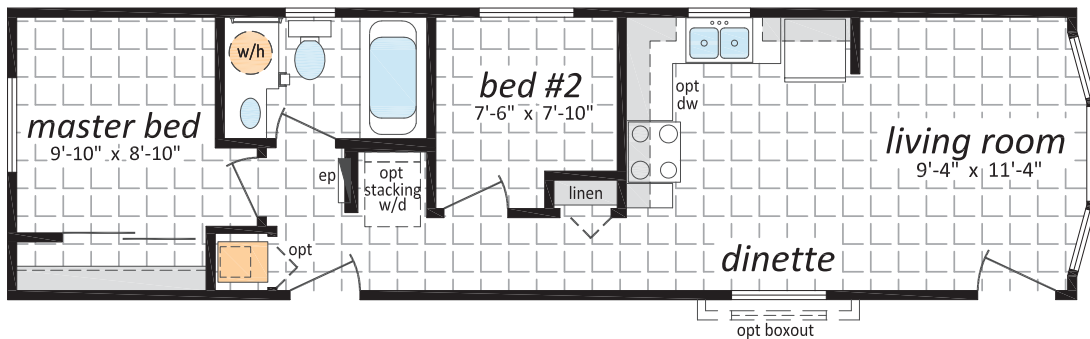


Canadian Cabin

CB-12441

12' x 44' 528 sq. ft.

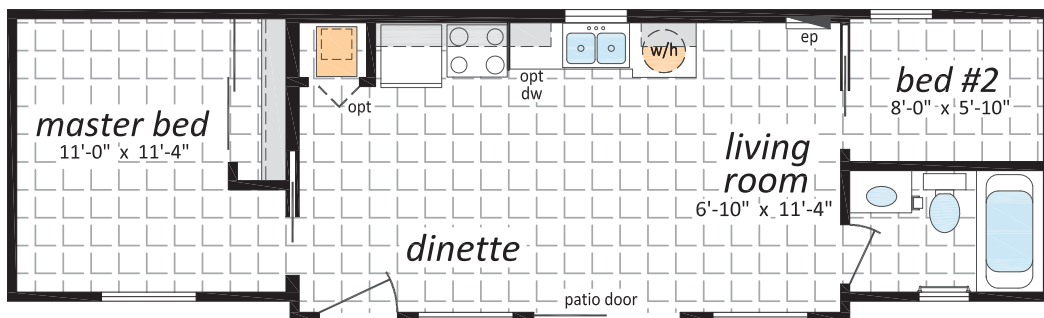
2 Beds, 1 Bath



CB-12442

12' x 44' 528 sq. ft.

2 Beds, 1 Bath

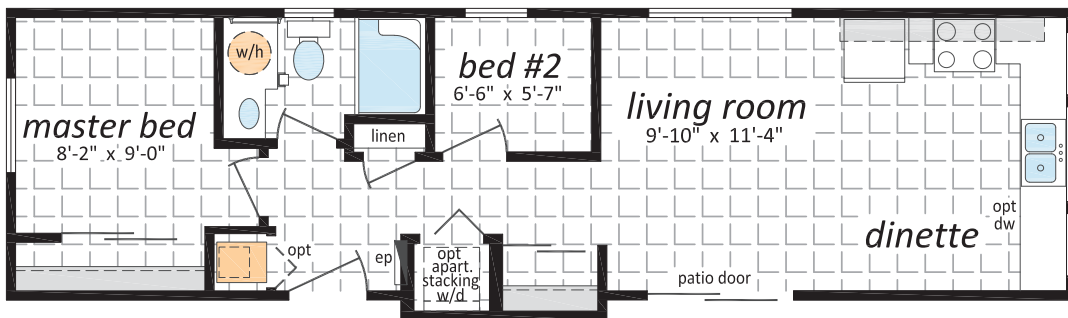


Canadian Cabin

CB-12443

12' x 44' 528 sq. ft.

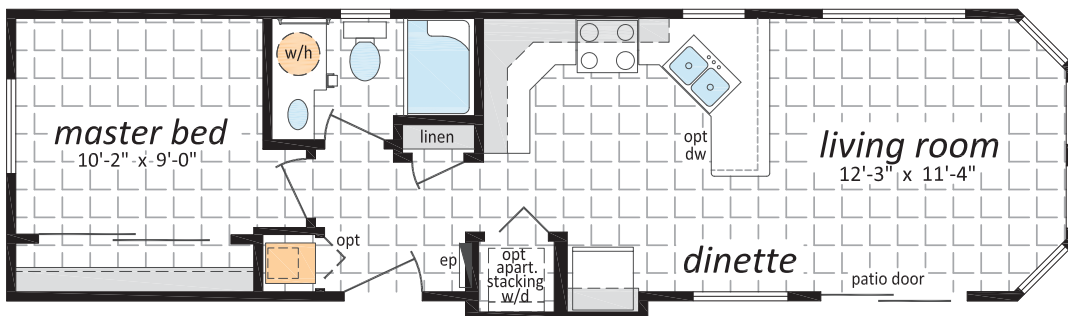
2 Beds, 1 Bath



CB-12444

12' x 44' 528 sq. ft.

1 Bed, 1 Bath



Canadian Cabin

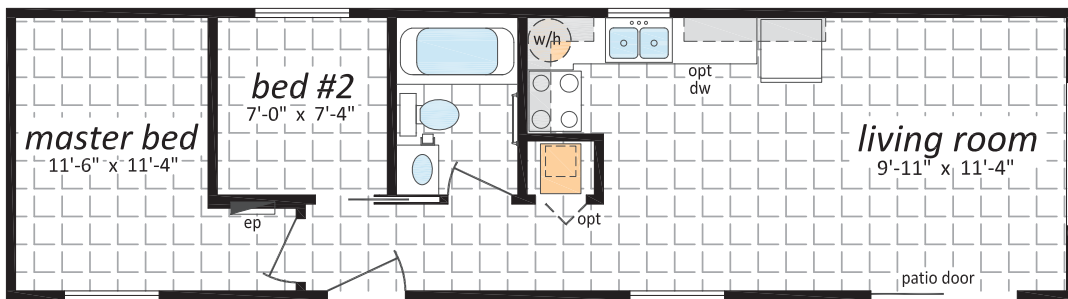
CB-12445

12' x 44' 528 sq. ft.

2 Beds, 1 Bath



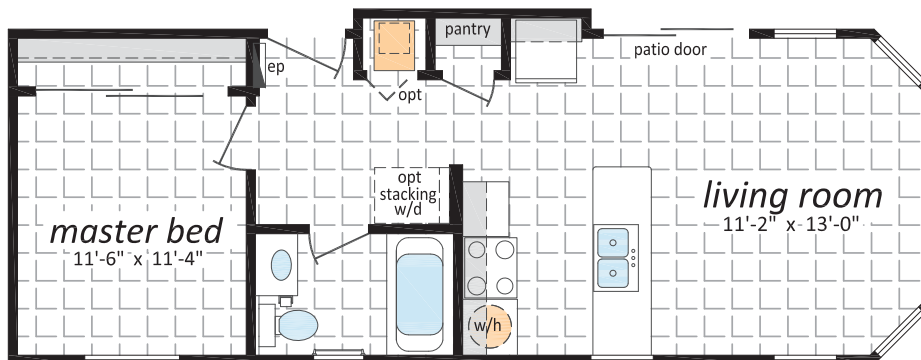
Artist Rendering; may show optional features



CB-14381

14' x 38' 532 sq. ft.

1 Bed, 1 Bath

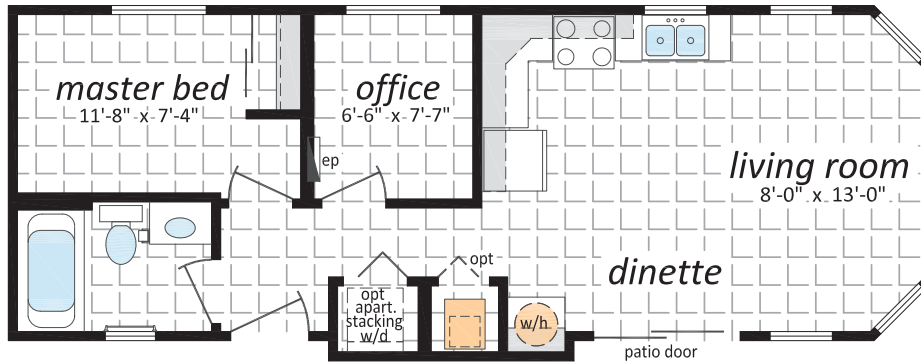


Canadian Cabin

CB-14382

14' x 38' 532 sq. ft.

1 Bed, 1 Bath, Office

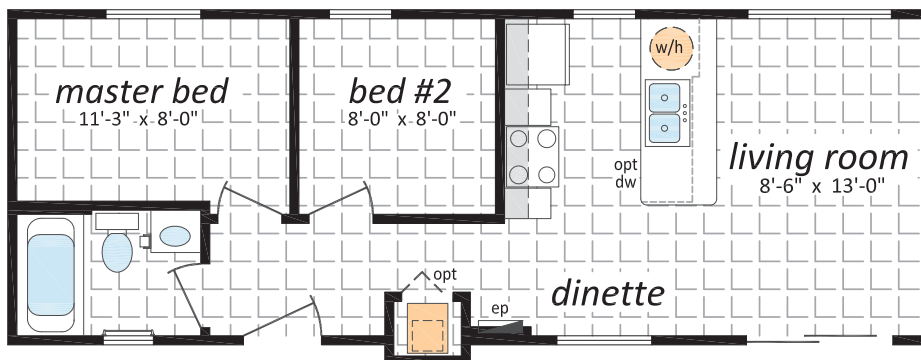


CB-14383

14' x 43' 532 sq. ft.

2 Beds, 1 Bath

(Note: Artist Rendering shown on cover page)



Optional Features

Exteriors

- Skylights
- Deluxe Garden Doors
- Patio Doors
- 9 Light Exterior Door
- Polyurethane Stone Accents
- Vinyl Shakes in Gable
- Octagon Windows
- "Panorama" Living Room Windows
c/w Diamond Cut Ceiling
- Sequoia Select Upgrade Vinyl Siding
- Turbine Vents
- Extra Exterior GFI
- High Snow Load

Interiors

- Painted Drywall Throughout Home
- Laminate Flooring
- Carpet in 2nd and 3rd Bedrooms
- French Doors
- Mirrored Closet Doors
- Freezer Cabinets
- Utility Room Door c/w Grill
- Ceiling Fan with Lights
- 2 - 4' Ceiling Mount or Recessed Fluorescent
Lights
- Decora Switch Package
- 2" PVC Blinds
- Programmable Thermostat
- Benton Style Doors

Bathroom

- Glass Mosaic Tile Back splash
- Ceramic Tile Back splash
- Jetted Oval Tub
- Jetted One Piece Tub and Shower
- 60" Shower c/w Glass Doors
- Full tiled shower w/sliding glass doors
- Vessel Vanity Sink w/ 90 degree Faucet
- Accessible Toilet
- Grab Bars

Kitchen

- Raised Panel Solid Wood Cabinet Doors
- European Stainless Steel Range hood
- Etched Glass Cabinet Doors
- China Cabinets and Hutches
- Under Cabinet Lighting
- Upgrade High Definition Laminate Counter tops
- Ceramic Tile Back splash
- Glass Mosaic Tile Back splash
- Tip Out Soap Tray Below Kitchen Sink
- 4 Bulb Track Light c/w Dimmer Switch
- 24" Fluorescent Light Above Kitchen Sink
- Pot and Pan Drawers
- Combination Microwave and Range hood
- Goose Neck Moen Faucet

Utilities

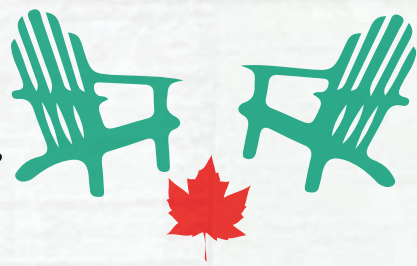
- Gas Fireplace complete with Air Circulating Fan
- Gas Water Heater
- Gas Furnace
- Oil Gun Furnace
- Self Cleaning Range
- Two Door Side By Side Refrigerator
- Handi-Hite Bottom Mount Refrigerator
- Stacking Washer and Dryer
- Front Load Washer and Dryer
- Central Vacuum System
- Roughed in for Central Vacuum
- Air Conditioner Ready Furnace
- 2 1/2 Ton Air Conditioner
- Extra Telephone Jacks
- Surge Protector
- Garage Ready Package

Check off your extras ...

... and we will take care of the rest!



Canadian Cabin



Authorized Retailer:

SHELTER HOME SYSTEMS

P.O. Box 845 #200 Hwy 18 West
Estevan, SK S4A 2A7
www.shelterhomes.ca



This is not a fully detailed specification. SRI Homes reserves the right to change specifications, designs, materials and suppliers without notice and without incurring obligation. Information contained herein is from data available at the time of printing. Square footage and dimensions are approximate. Photos and renderings may show optional features. Printed in Canada 11/23