

The Mainline Home Series



SHELTER
HOME SYSTEMS

WHY SHELTER?

Shelter Home Systems has been supplying affordable and quality built homes to Canadian families for over 40 years.

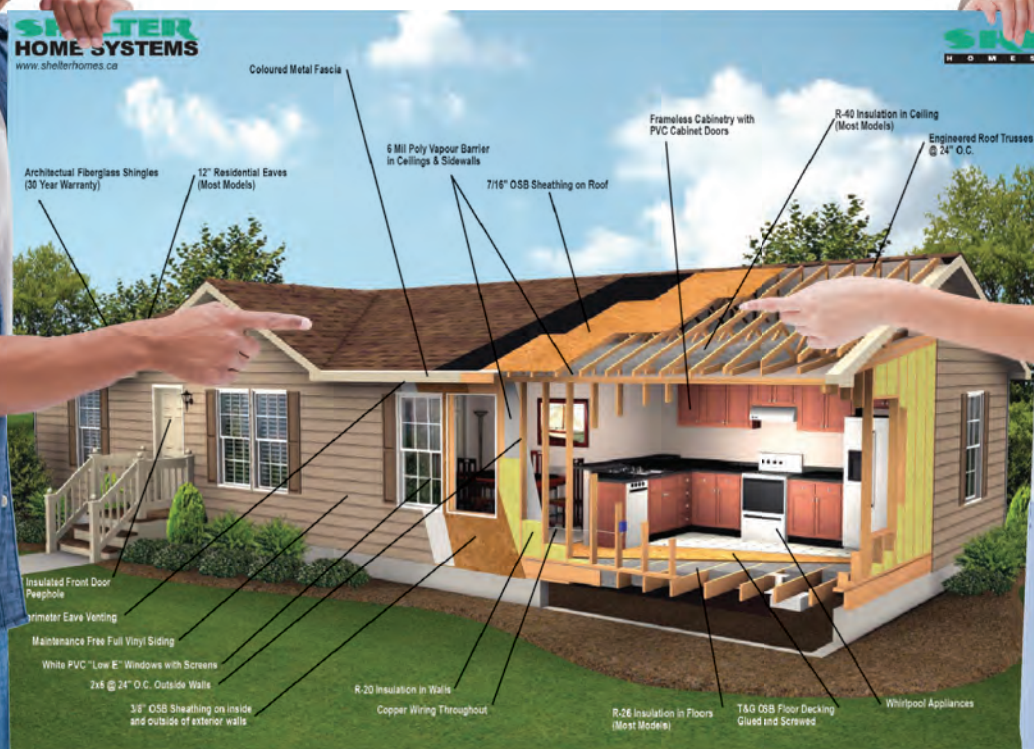
CHOICES

The Mainline Home series offers so many floor plans to choose from and that is just the beginning. From there you have a multitude of decor options to make your new home your very own.



QUALITY & AFFORDABILITY

A Mainline home is affordable, yet quality built. There are also many optional features that you can add for that special look. Additionally, every Shelter home is covered by a 10 year warranty supplied by Progressive Home Warranty.



MODEL SPECIFICATIONS

STANDARD CONSTRUCTION

- ⇒ Limited Lifetime Architectural Shingles w/Underlayment
- ⇒ Engineered Roof Trusses
- ⇒ Nominal 4/12 Fixed Pitch for < 28' Wides
- ⇒ 3/12 Fixed Roof for 28' - 30' Wides
- ⇒ 4/12 Hinged Roof For > 30' Wides
- ⇒ 12" Residential Eaves on 3 Sides (4 Sides on Sectionals & RTM)
- ⇒ 6 MIL Poly Vapour Barrier in Ceiling & Sidewalls
- ⇒ White Metal Fascia & Soffit
- ⇒ Cathedral Ceiling in Kitchen, Dining Room & Living Room
- ⇒ 8' 2 x 6 @ 24" O.C. Outside Walls
- ⇒ 3/8" OSB Sheathing on Inside & Outside of Ext. Walls
- ⇒ Low Maintenance Vinyl Siding
- ⇒ Tubular Laminated Steel Frame: 8" (< 16'x68') or 12" (> 16'x68')
- ⇒ 2 x 10 Floor Joists (16' wide), 16" O.C.
- ⇒ I-Joist Floor (20' & 22' wide), 16" O.C.
- ⇒ 14" Engineered Open Web Floor (24' RTM), 19.2" O.C.
- ⇒ T&G OSB Floor Decking; Glued & Mechanically Fastened
- ⇒ Insulation: R-40 Ceiling, R-22 Wall, R-48 Floor
- ⇒ Weatherproof exterior GFI Receptacle
- ⇒ Frost Free Tap c/w Check Valve
- ⇒ Airtight Protocols
- ⇒ Hangered floor on a double LVL rim joist (RTM Model Only)
- ⇒ Windows (1.4 U-Value | PVC Jamb | LowE | w/Screen):
 - 70x52 In Living Room; White; Sliding
 - 46x42 In Bedrooms; White; Sliding
 - 46x52 In Dining Area; White; Sliding
 - 30x36 In Kitchen; White; Sliding
- ⇒ 36" Insulated No Light Front Door c/w Peephole
- ⇒ 32" Insulated No Light Rear Door c/w Peephole
- ⇒ LED Exterior Pot Light At Each Exterior Door

KITCHEN

- ⇒ Fridge: 18 CU. FT. Two Door - Top Freezer - White
- ⇒ Range: 30" Electric - White
- ⇒ Range Hood: Two Speed, Vented To Exterior, White
- ⇒ Dishwasher: White
- ⇒ Sink: Two Bowl Stainless Steel w/Single Lever Faucet (Chrome)

BATH

- ⇒ Tub/Shower: One Piece Fiberglass in all Bathrooms
- ⇒ White Oval Sink, Drop in w/Single Lever Faucet (Chrome)
- ⇒ Single Flush Toilet w/ Lined Tank (White)
- ⇒ Shower Rod & Curtain Liner in all Bathrooms
- ⇒ Chrome Towel Bar & Paper Holder
- ⇒ GFI Receptacles
- ⇒ Dehumidistat on Main Bath Fan

UTILITIES

- ⇒ 40 GI Electric Water Heater
- ⇒ Electric Furnace
- ⇒ 200 Amp Electric Service Panel
- ⇒ Electric Conduit Through Floor
- ⇒ Incandescent Light Bulb Package
- ⇒ Programmable Thermostat
- ⇒ Copper Wiring Throughout
- ⇒ Plumbed & Wired for Side by Side Washer & Dryer
- ⇒ Shut Off Valves on all Fixtures
- ⇒ Insulated Water Lines in Water Heater Cavity
- ⇒ Smoke/CO Alarms w/Battery Back Up in Hallways
- ⇒ Smoke Alarms (all bedrooms)

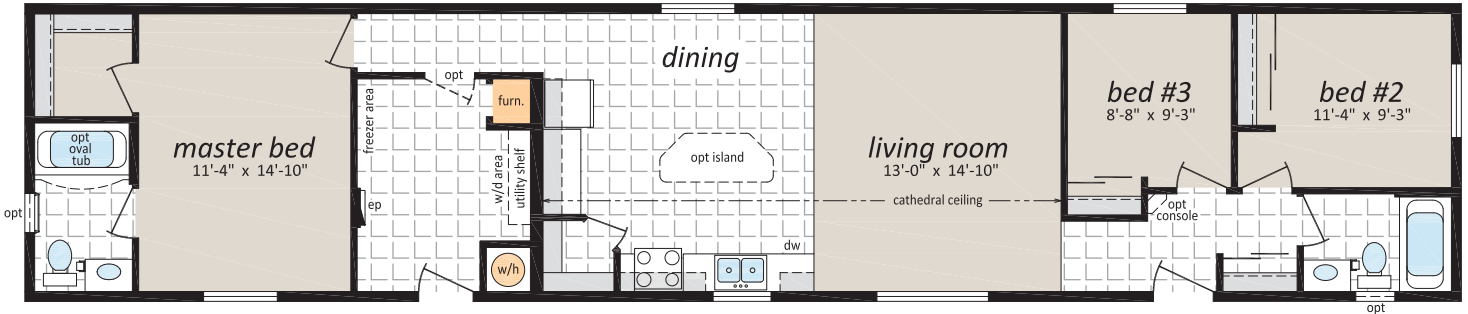
INTERIOR FINISH

- ⇒ Spraytex 1/2" Gyproc Ceilings
- ⇒ 100% Polyurethane Carpet in Living Room & Bedrooms
- ⇒ No Wax Vinyl Flooring in Areas Without Carpet
- ⇒ Wall Finish: Decorative Vinyl Over Gyproc (VOG)
- ⇒ Battens On VOG Joints
- ⇒ Ceiling Trim: 1-1/2" Battens
- ⇒ Baseboards: 356 Profile White
- ⇒ Window/Door Trim: 356 Profile White
- ⇒ Closets: Battens throughout
- ⇒ Pewter Interior Door Hardware T/O - Lever Handles
- ⇒ Pre-finished White Flat Interior Doors
- ⇒ Solid Closet Shelving
- ⇒ Toggle Light Switches
- ⇒ Modular Cabinets w/ Roller Drawer Hardware
- ⇒ PVC Wrap Cabinet Doors w/Pewter Euro Style Handles
- ⇒ Cabinet Crown Moulding: 510 Profile (Matching Cabinet Colour)
- ⇒ 3" White Subway Kitchen Tile Backsplash (White Grout)
- ⇒ Laminated Countertop
- ⇒ Utility Cabinets above Washer & Dryer
- ⇒ One Bank of Drawers



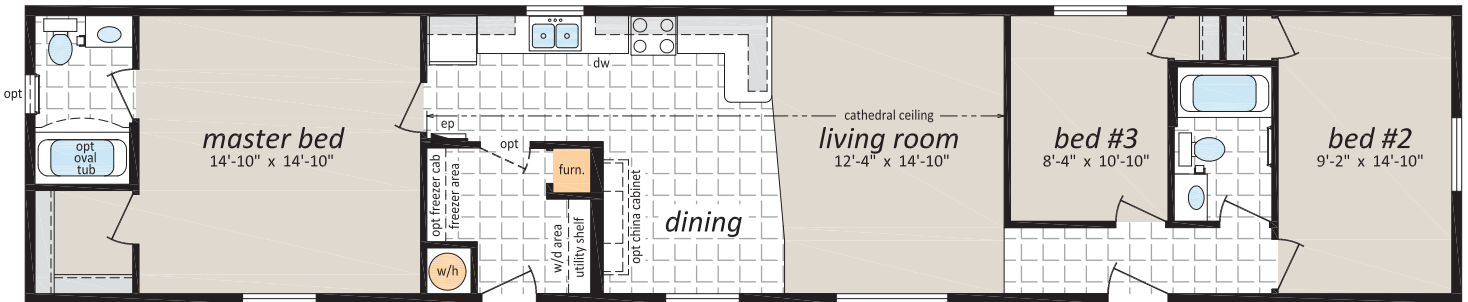
ML-161

16' x 76' - 1,216 sq. ft.
3 Beds, 2 Baths



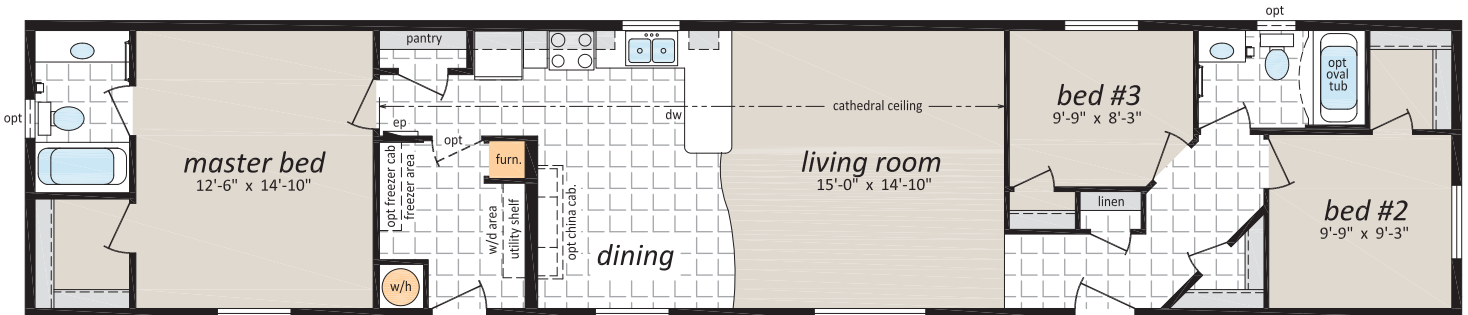
ML-162

16' x 76' - 1,216 sq. ft.
3 Beds, 2 Baths



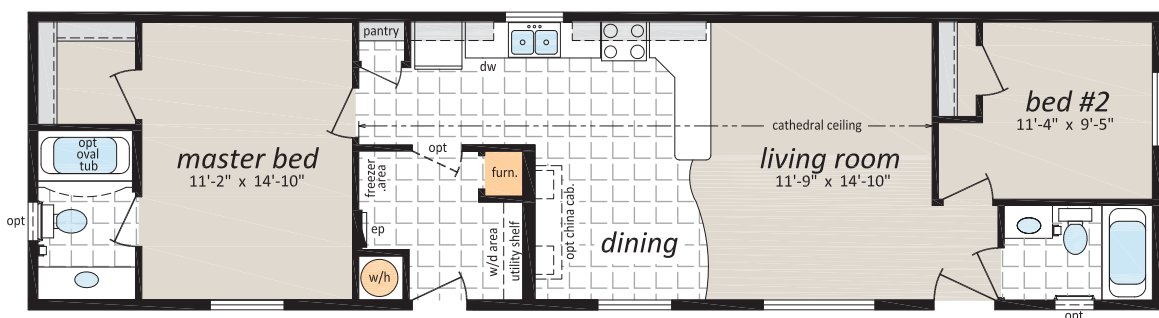
ML-163

16' x 76' - 1,216 sq. ft.
3 Beds, 2 Baths



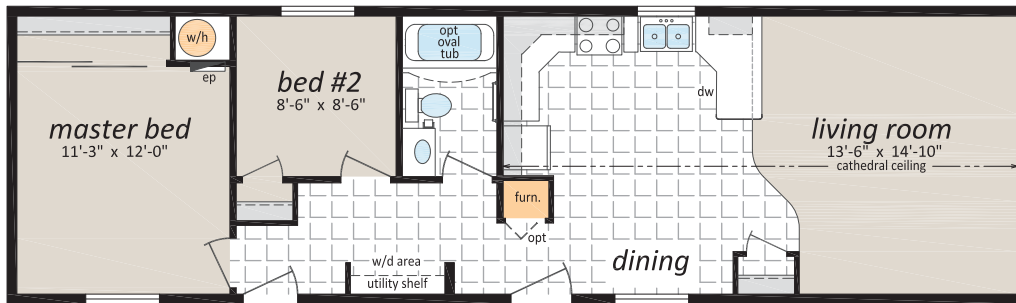
ML-164

16' x 60' - 960 sq. ft.
2 Beds, 2 Baths



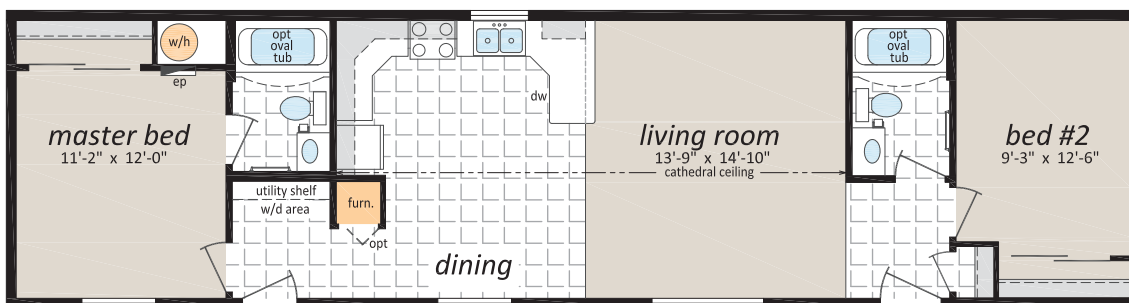
ML-165

16' x 54' - 864 sq. ft.
2 Beds, 1 Bath



ML-166

16' x 60' - 960 sq. ft.
2 Beds, 2 Baths



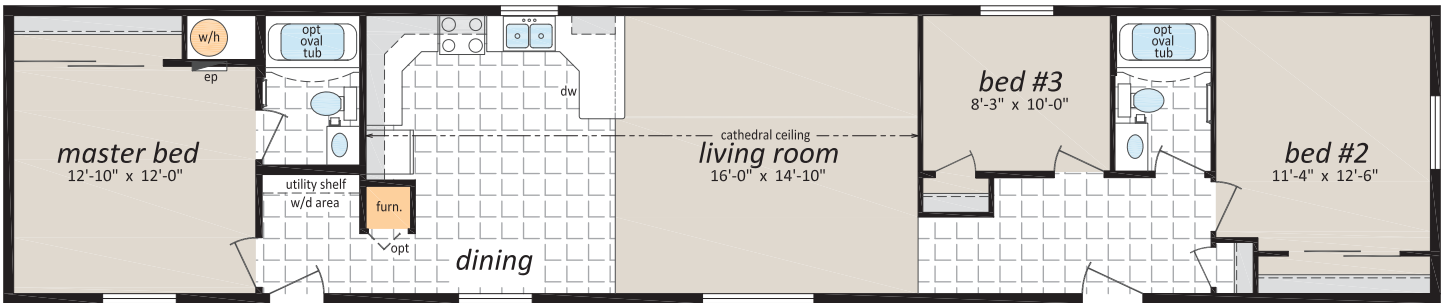
ML-167

16' x 68' - 1,088 sq. ft.
3 Beds, 2 Baths



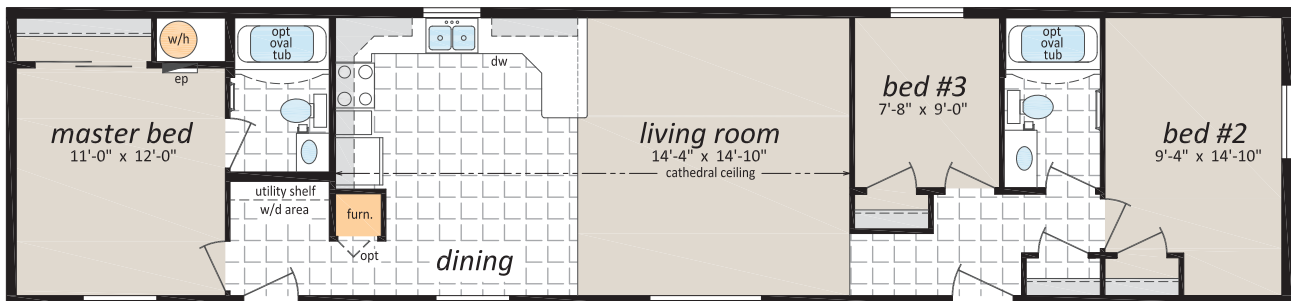
ML-168

16' x 76' - 1,216 sq. ft.
3 Beds, 2 Baths



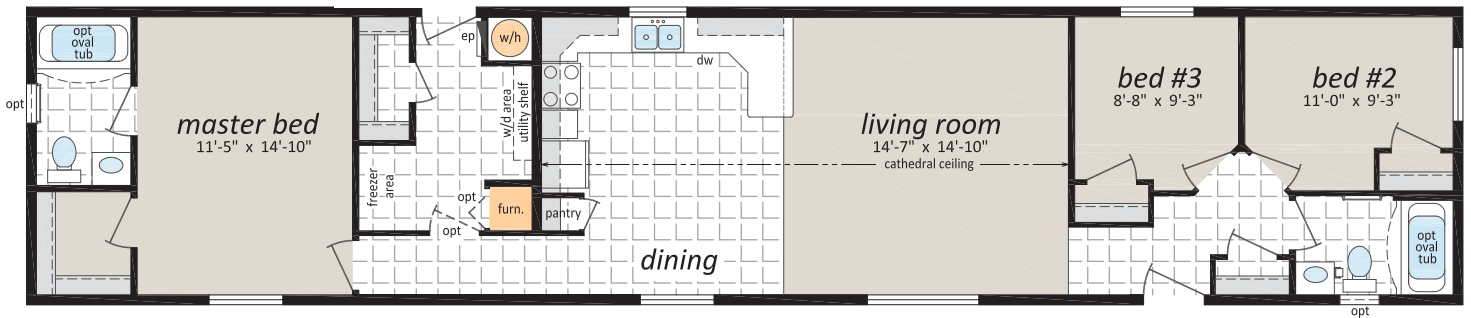
ML-169

16' x 68' - 1,088 sq. ft.
3 Beds, 2 Baths



ML-170

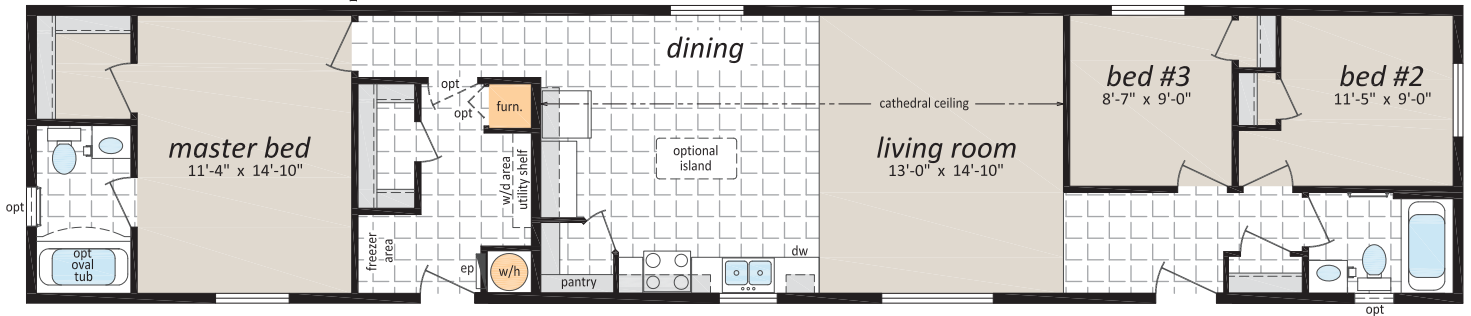
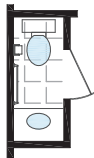
16' x 76' - 1,216 sq. ft.
3 Beds, 2 Baths



Optional Half Bath

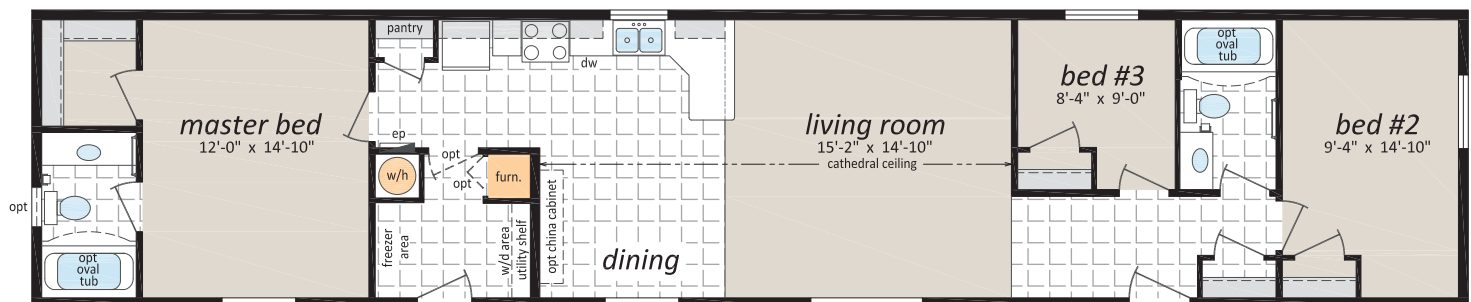
ML-171

16' x 76' - 1,216 sq. ft.
3 Beds, 2 Baths



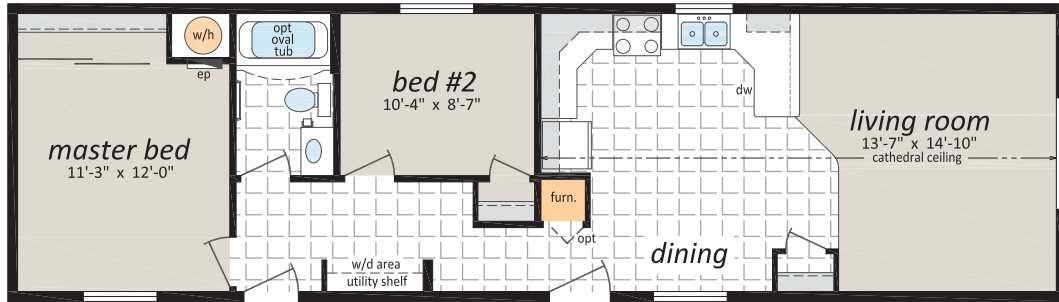
ML-172

16' x 76' - 1,216 sq. ft.
3 Beds, 2 Baths



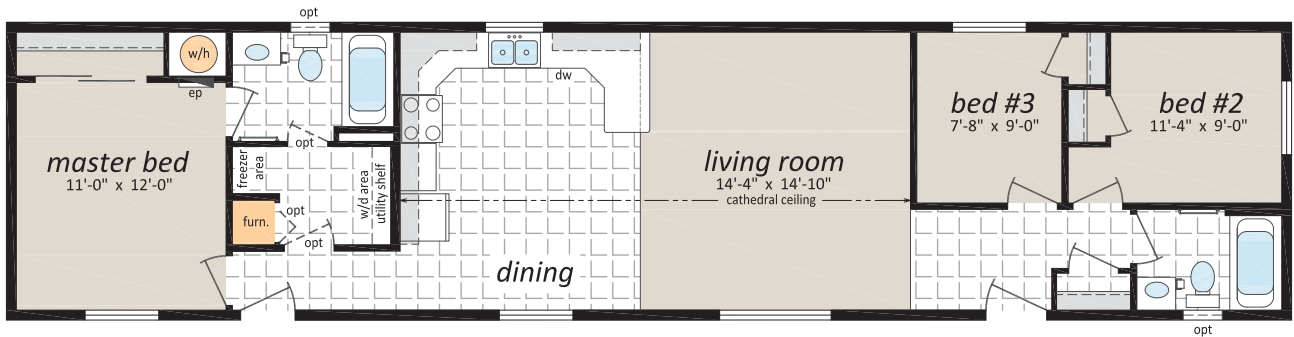
ML-173

16' x 56' - 896 sq. ft.
2 Beds, 1 Bath



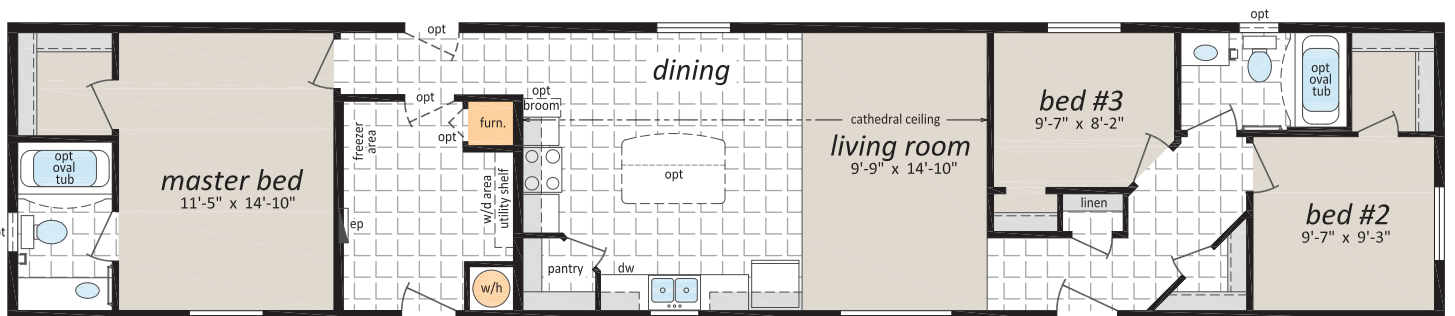
ML-174

16' x 68' - 1,088 sq. ft.
3 Beds, 2 Bath



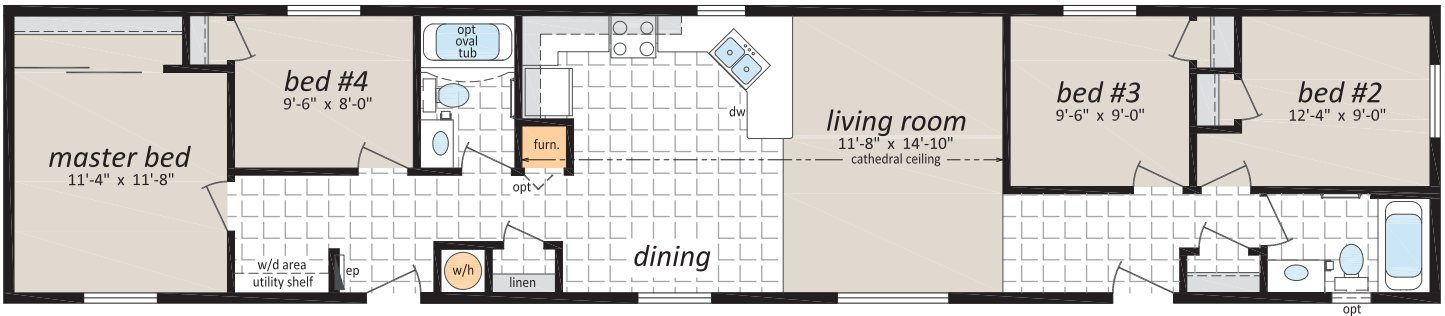
ML-1610

16' x 76' - 1,216 sq. ft.
3 Beds, 2 Baths



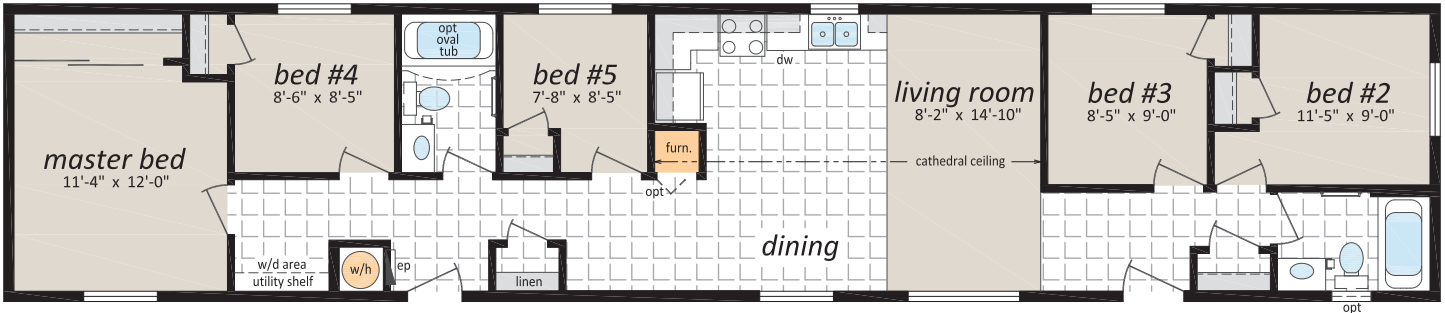
ML-1615

16' x 76' - 1,216 sq. ft.
4 Beds, 2 Baths



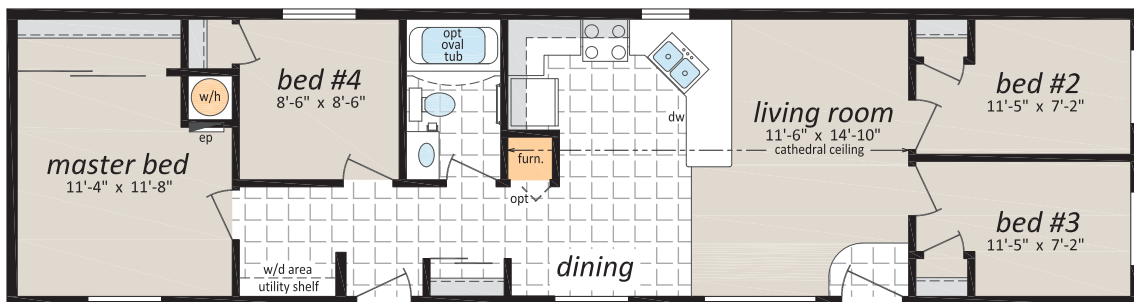
ML-1616

16' x 76' - 1,216 sq. ft.
5 Beds, 2 Baths



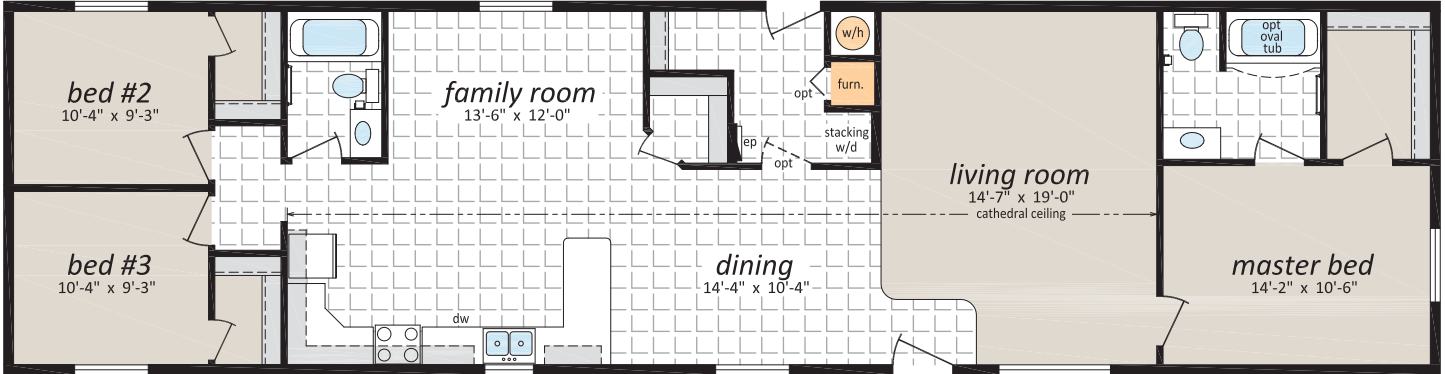
ML-1617

16' x 60' - 960 sq. ft.
4 Beds, 1 Bath



ML-201

20' x 76' - 1,520 sq. ft.
3 Beds, 2 Baths, Family Room

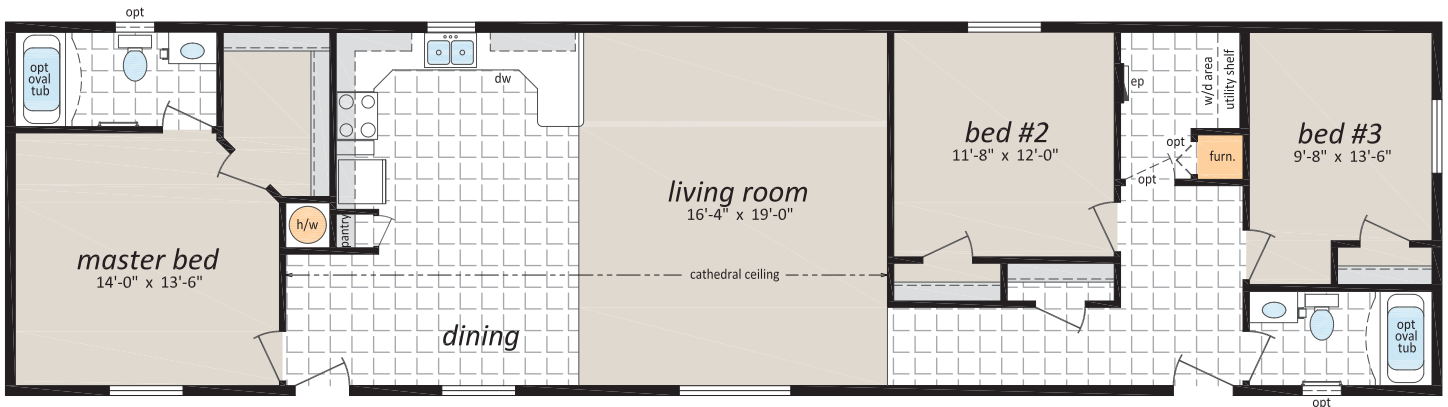


ML-202

20' x 76' - 1,520 sq. ft.
3 Beds, 2 Baths

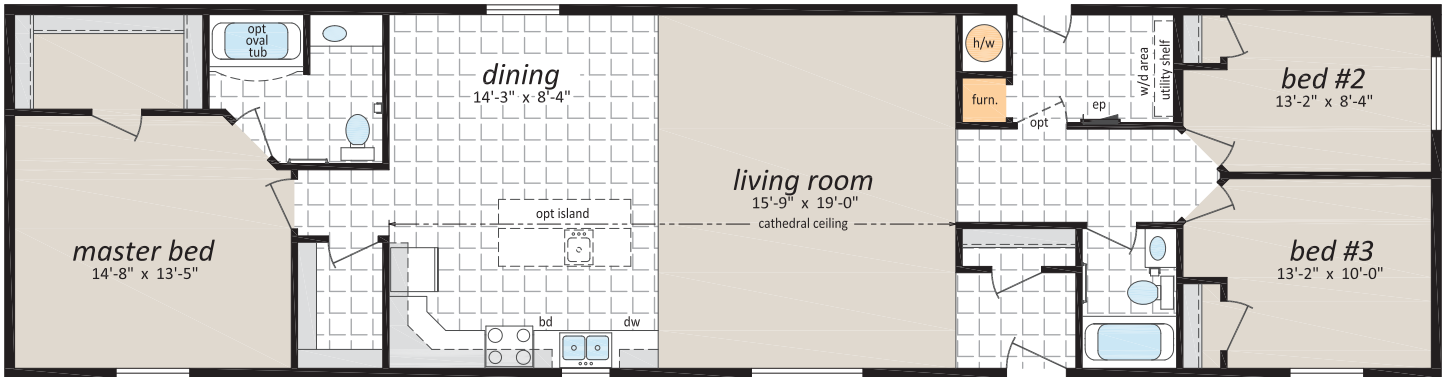


Artist Rendering;
may show optional features



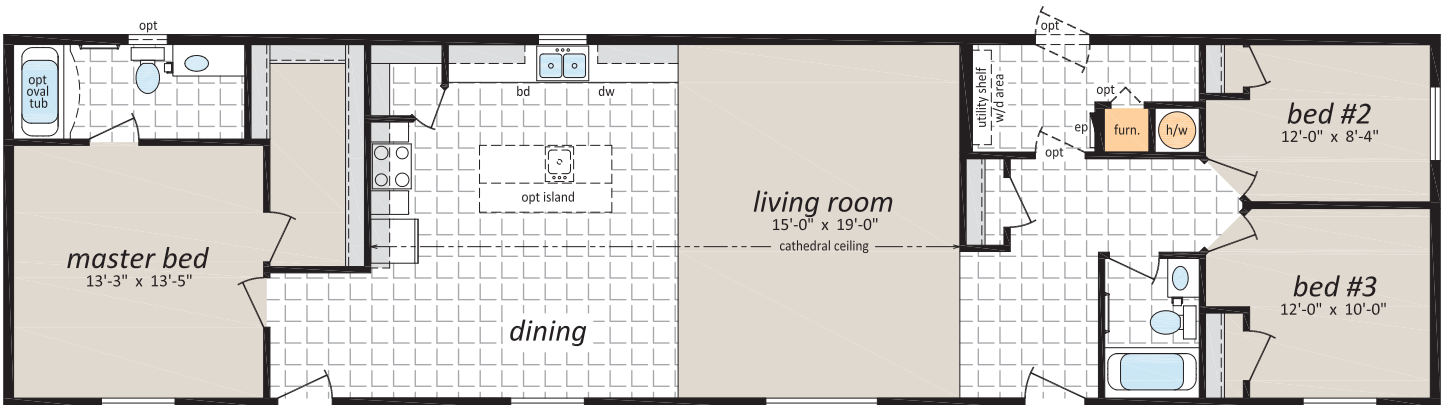
ML-203

20' x 76' - 1,520 sq. ft.
3 Beds, 2 Baths



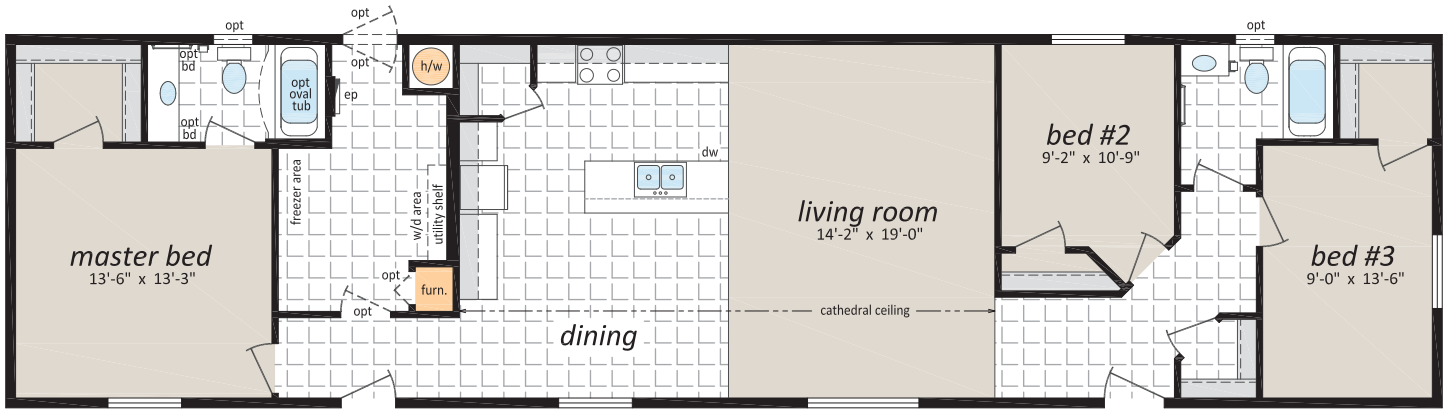
ML-204

20' x 76' - 1,520 sq. ft.
3 Beds, 2 Baths



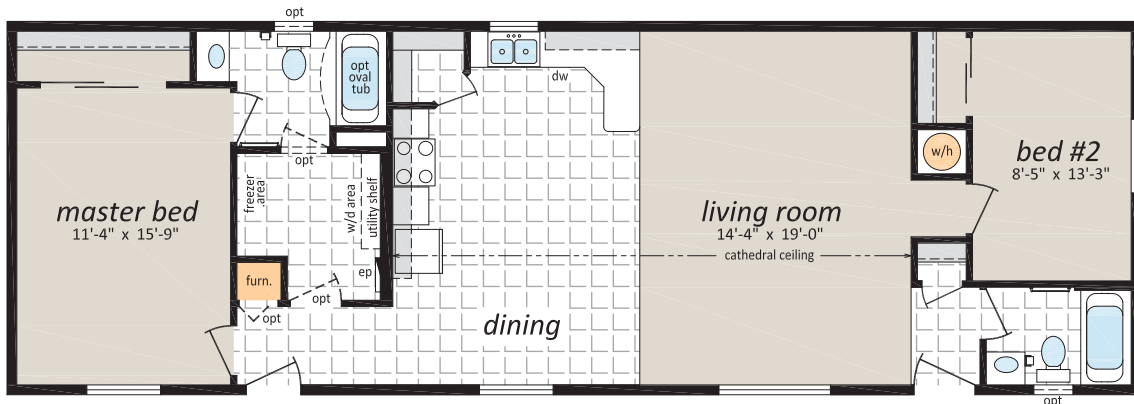
ML-205

20' x 76' - 1,520 sq. ft.
3 Beds, 2 Baths



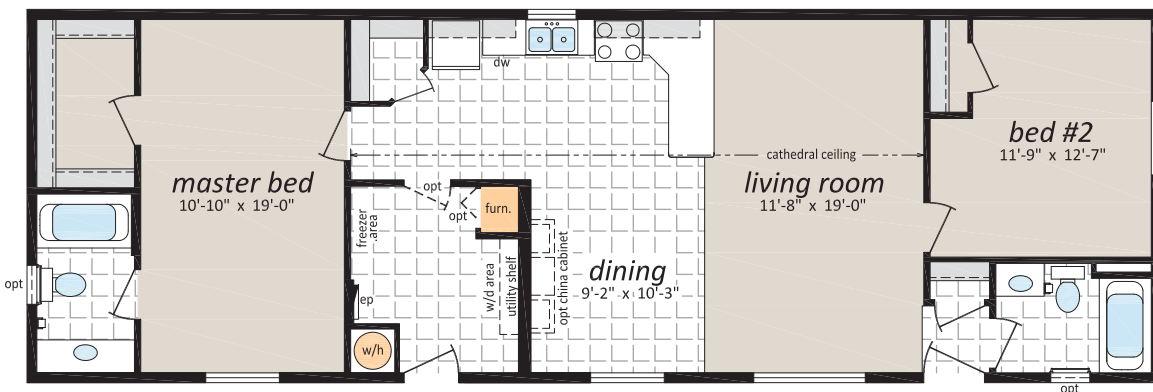
ML-206

20' x 60' - 1,200 sq. ft.
2 Beds, 2 Baths



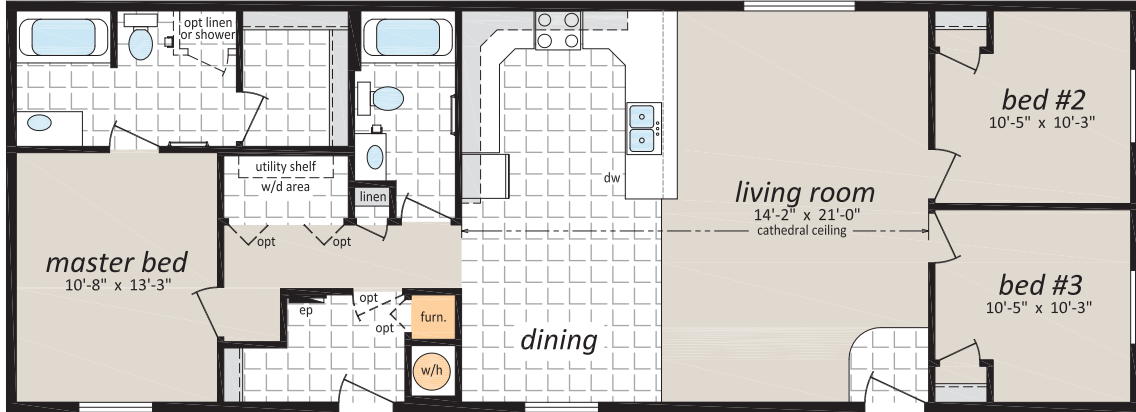
ML-207

20' x 60' - 1,200 sq. ft.
2 Beds, 2 Baths



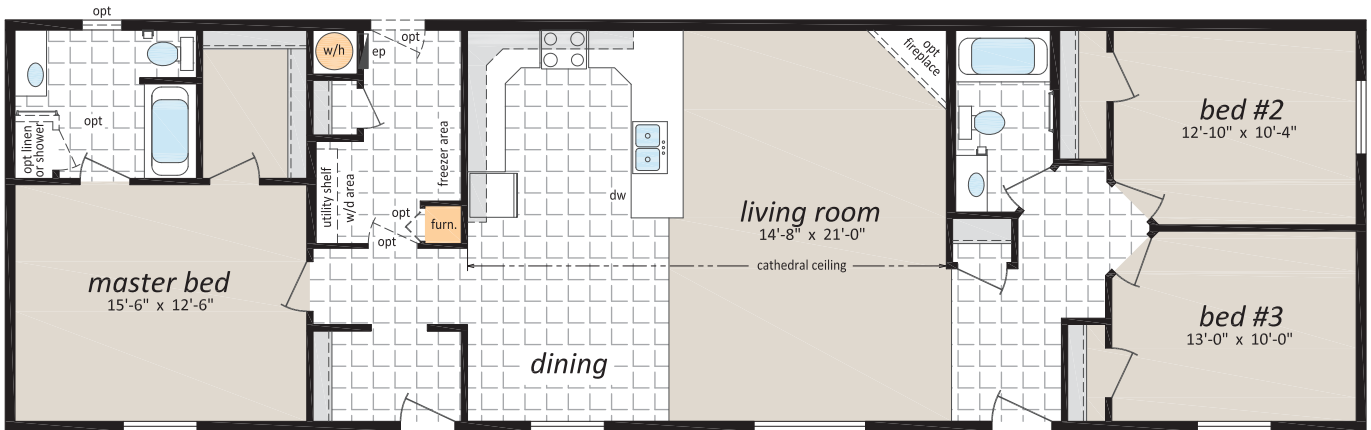
ML-1

22' x 60' - 1,320 sq. ft.
3 Beds, 2 Baths



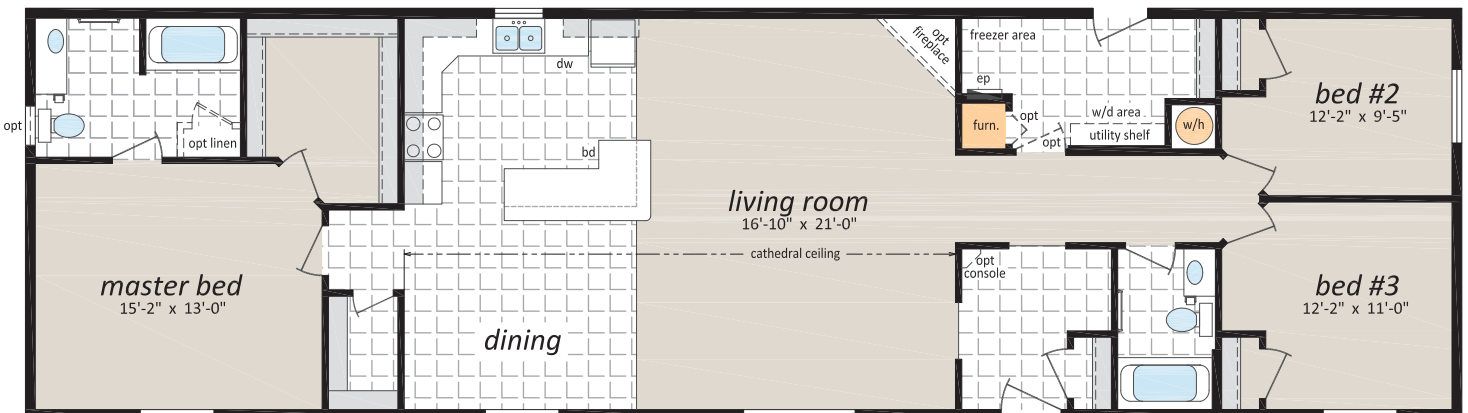
ML-2

22' x 72' - 1,584 sq. ft.
3 Beds, 2 Baths



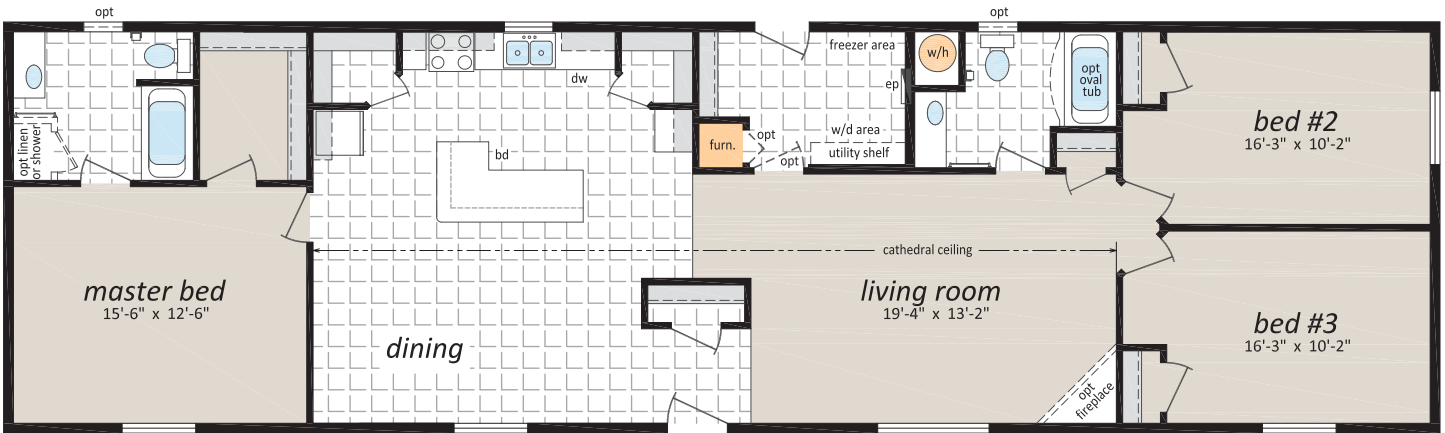
ML-3

22' x 76' - 1,672 sq. ft.
3 Beds, 2 Baths



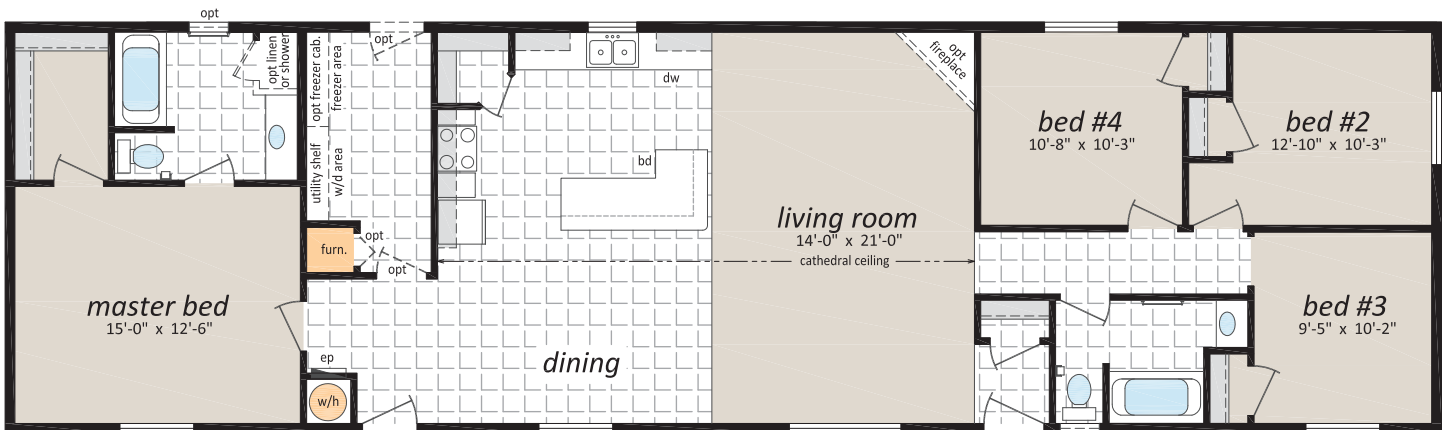
ML-4

22' x 76' - 1,672 sq. ft.
3 Beds, 2 Baths



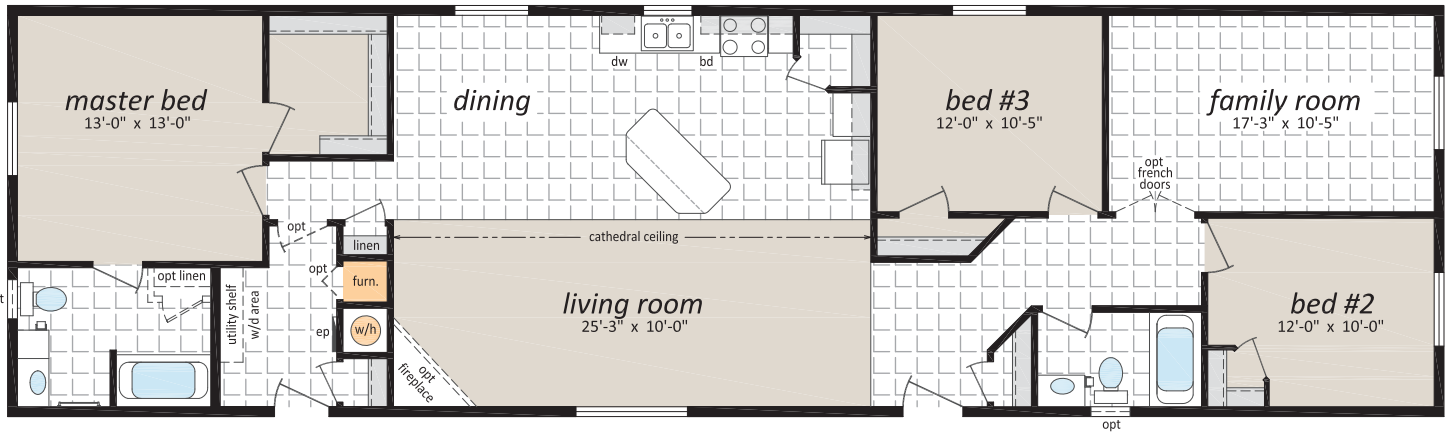
ML-5

22' x 76' - 1,672 sq. ft.
4 Beds, 2 Baths



ML-6

22' x 76' - 1,672 sq. ft.
3 Beds, 2 Baths



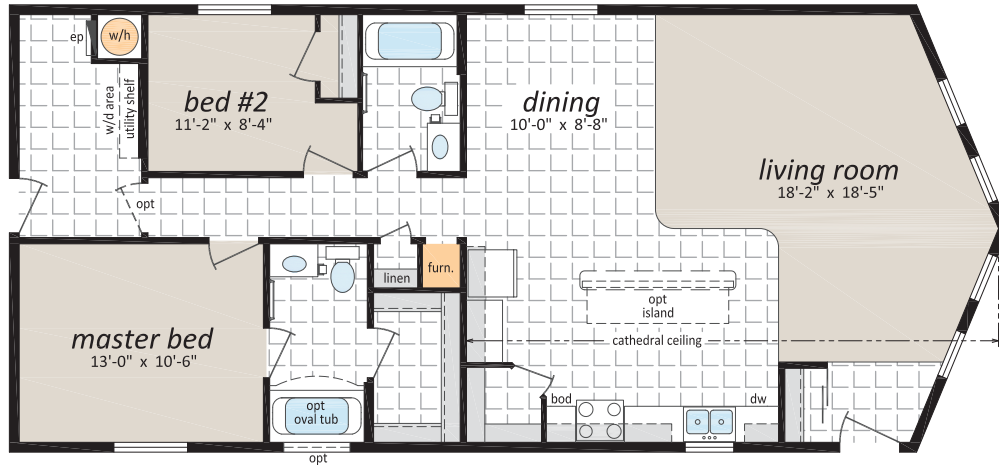
ML-7

22' x 76' - 1,672 sq. ft.
3 Beds, 2 Baths



ML-241

24' x 53' - 1,248 sq. ft.
2 Beds, 2 Baths, Prow Front

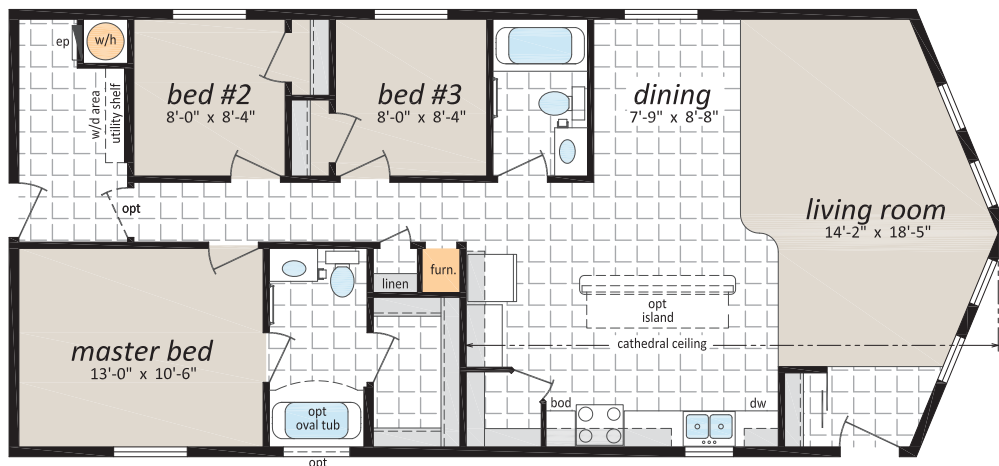


ML-242

24' x 53' - 1,248 sq. ft.
3 Beds, 2 Baths, Prow Front



Artist Rendering;
may show optional features



ML-243

24' x 50' - 1,200 sq. ft.
3 Beds, 2 Baths

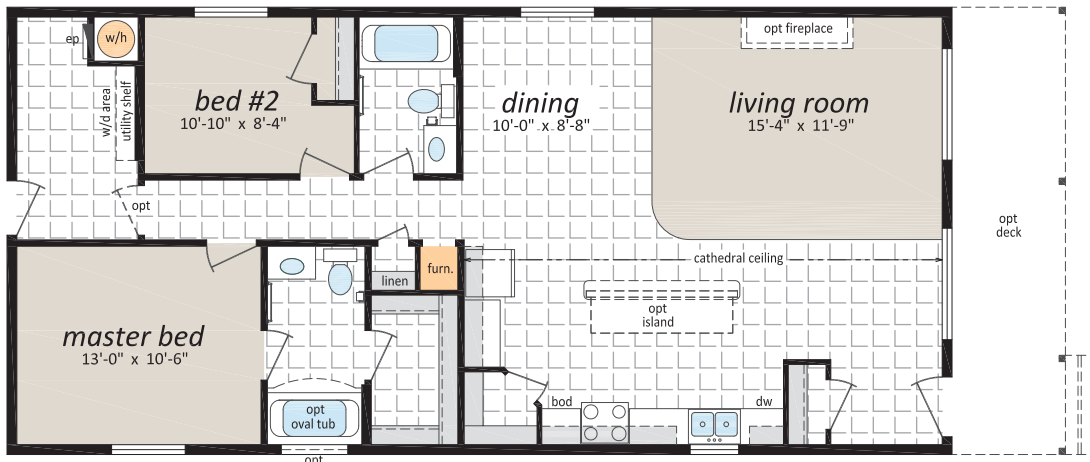


ML-244

24' x 50' - 1,200 sq. ft.
2 Beds, 2 Baths, Optional Porch

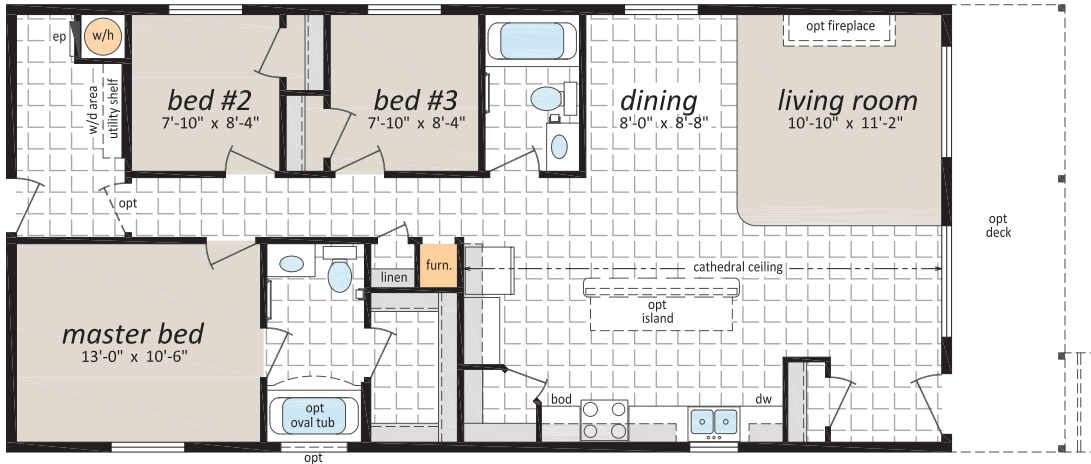


Artist Rendering;
may show optional features



ML-245

24' x 50' - 1,200 sq. ft.
3 Beds, 2 Baths, Optional Porch



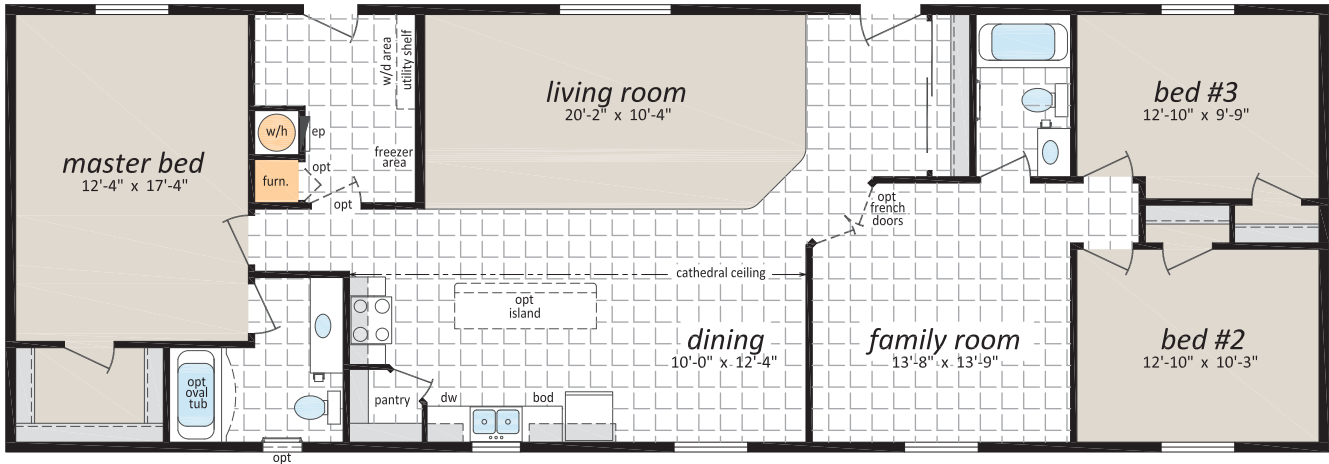
ML-246

24' x 60' - 1,440 sq. ft.
3 Beds, 2 Baths



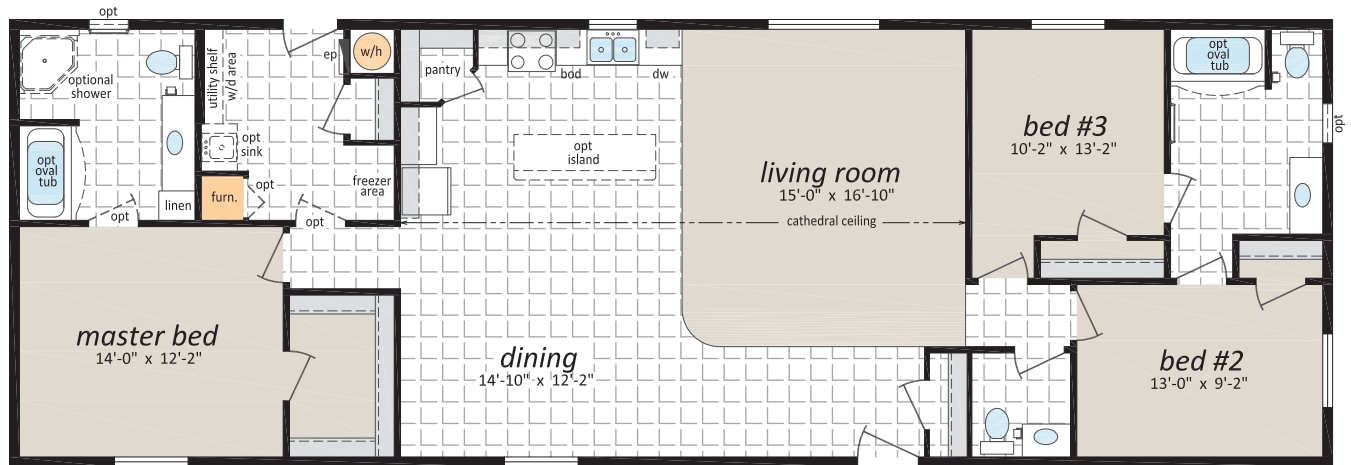
ML-247

24' x 70' - 1,680 sq. ft.
3 Beds, 2 Baths



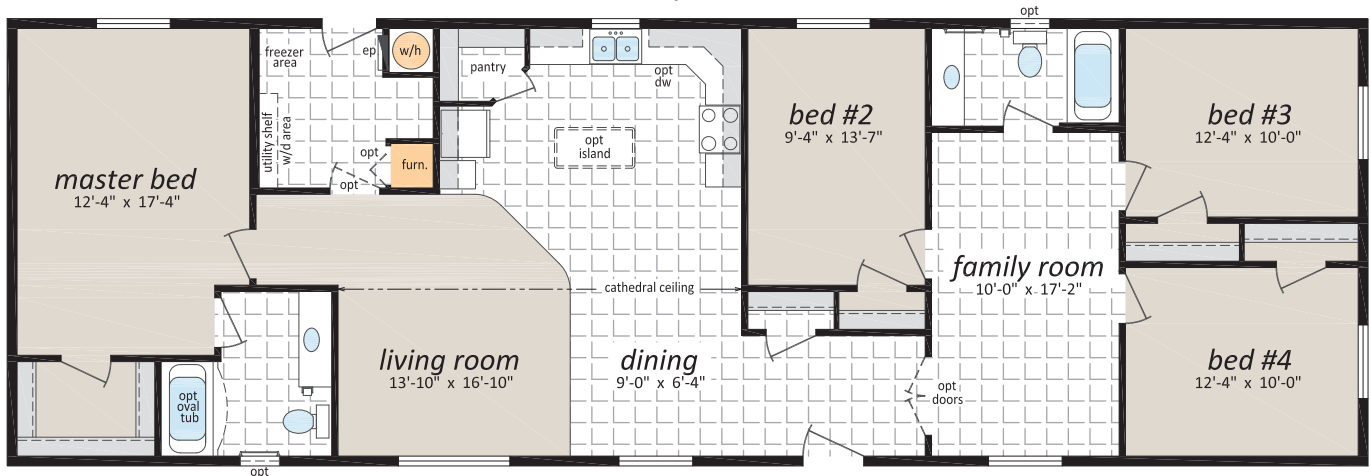
ML-248

24' x 70' - 1,680 sq. ft.
3 Beds, 2.5 Baths



ML-249

24' x 72' - 1,728 sq. ft.
4 Beds, 2 Baths

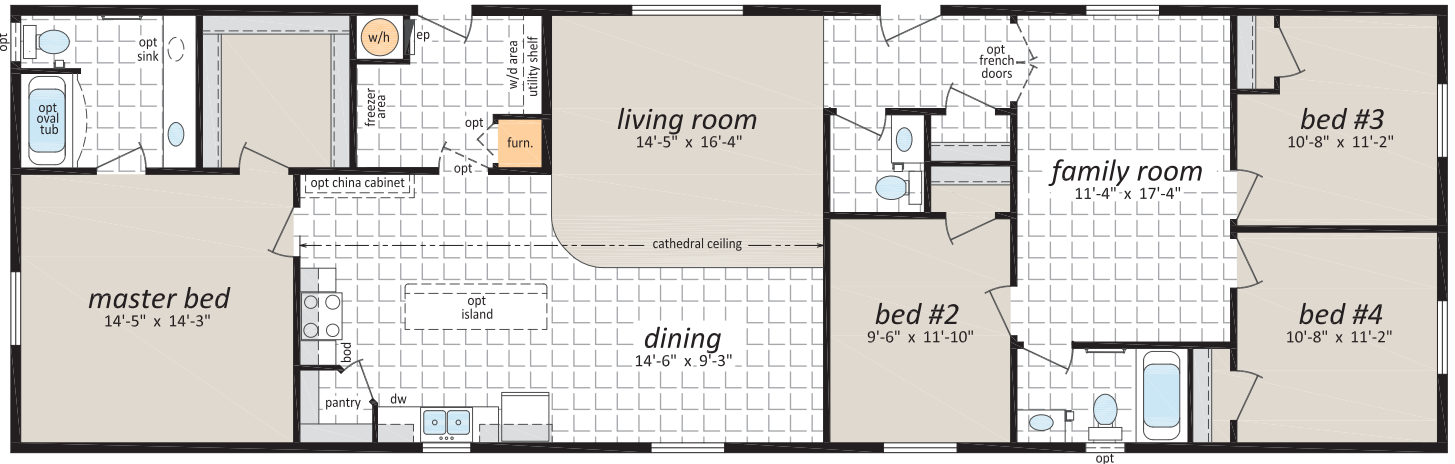


ML-2410

24' x 76' - 1,824 sq. ft.
4 Beds, 2 Baths

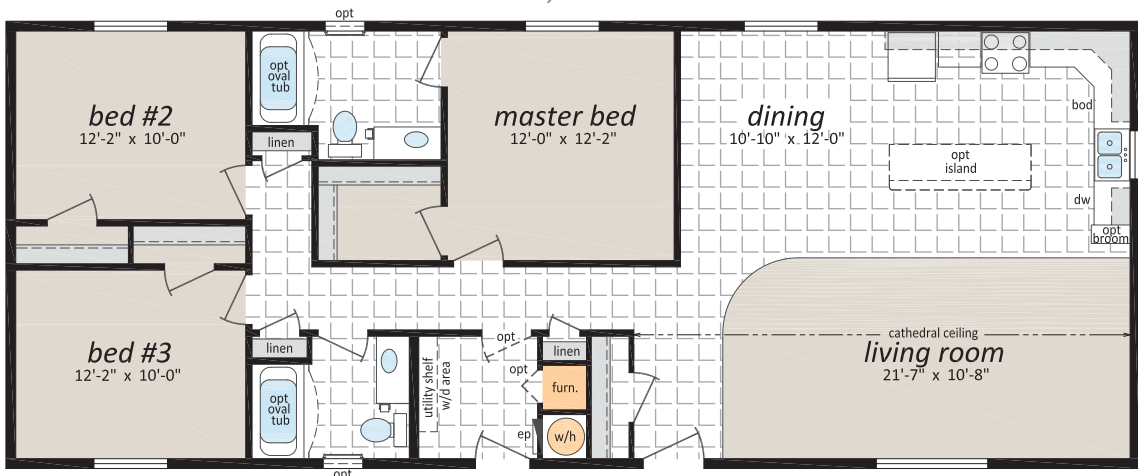


Artist Rendering; may show optional features



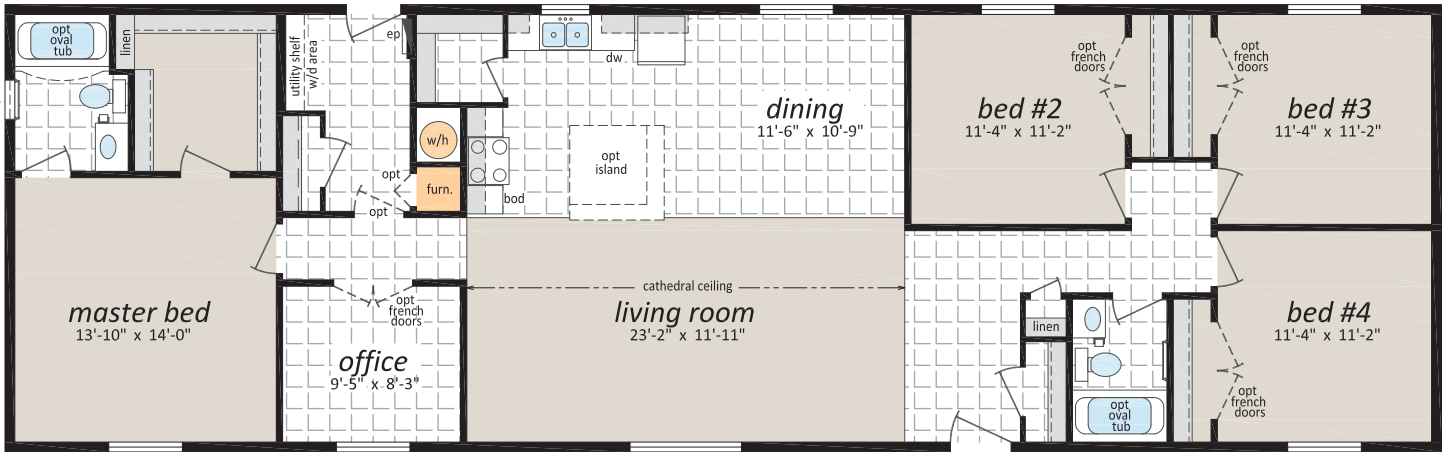
ML-2411

24' x 60' - 1,440 sq. ft.
3 Beds, 2 Baths



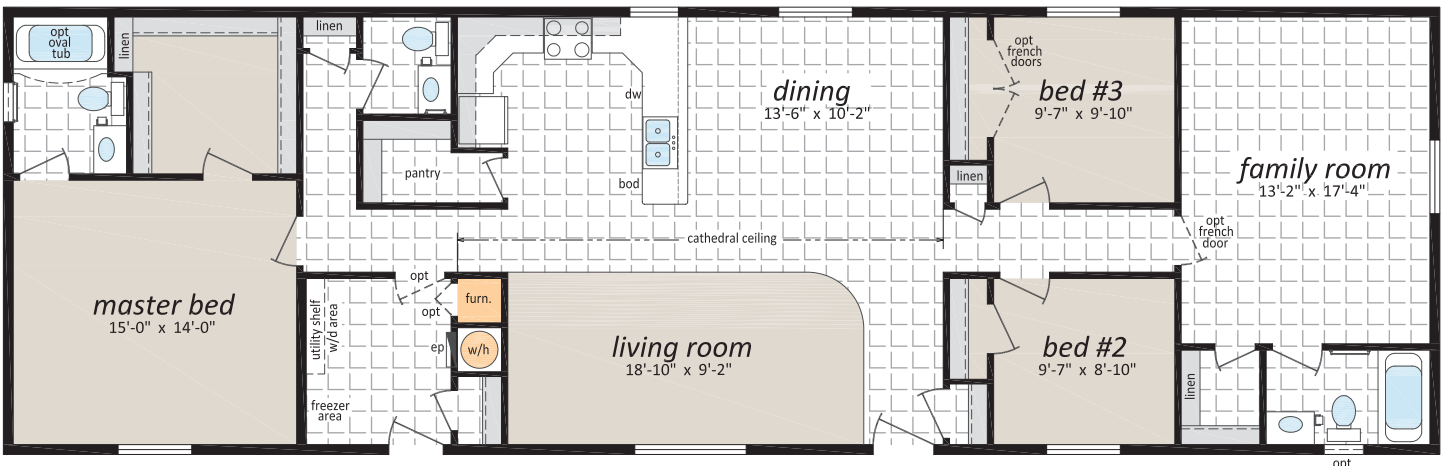
ML-2412

24' x 76' - 1,824 sq. ft.
4 Beds, 2 Baths



ML-2413

24' x 76' - 1,824 sq. ft.
4 Beds, 2.5 Baths

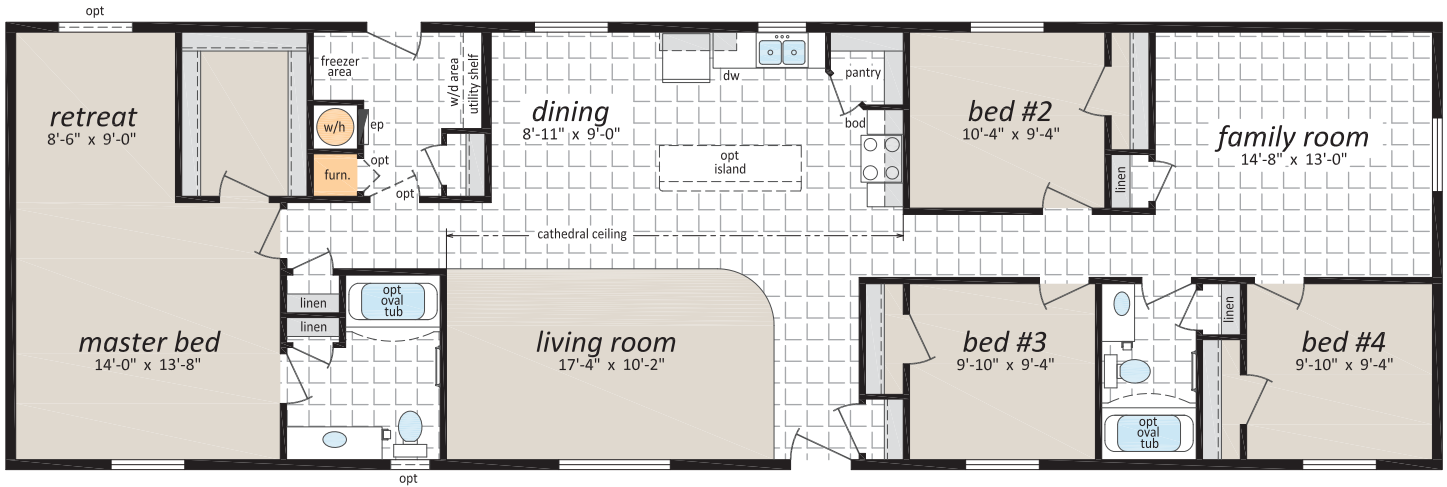


ML-2414

24' x 76' - 1,824 sq. ft.
4 Beds, 2 Baths

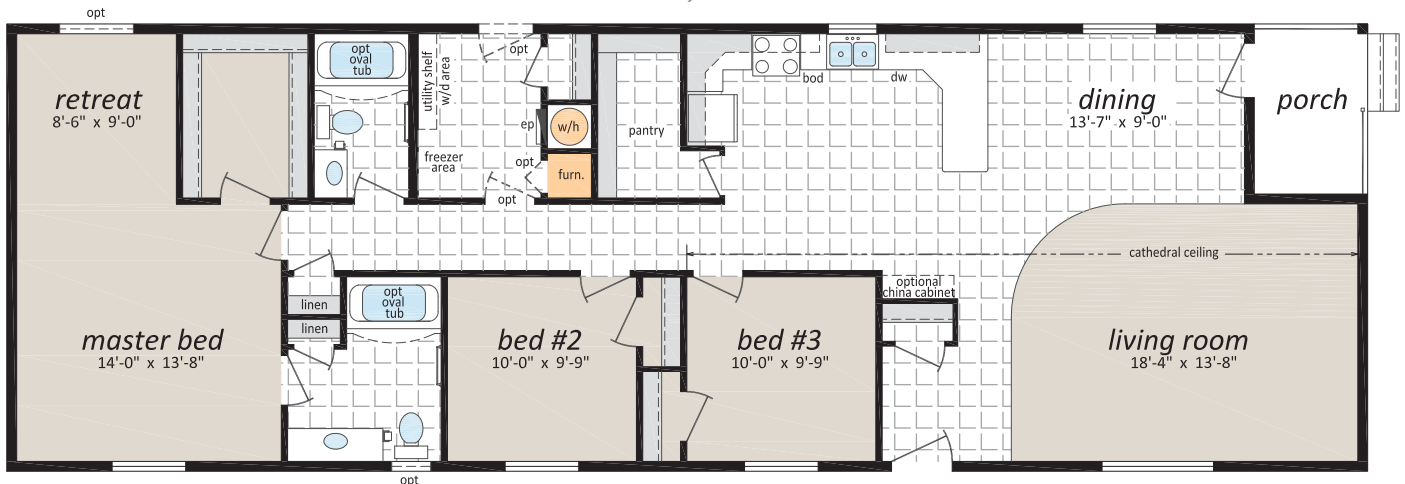


Artist Rendering;
may show optional features



ML-2415

24' x 72' - 1,728 sq. ft.
3 Beds, 2 Baths

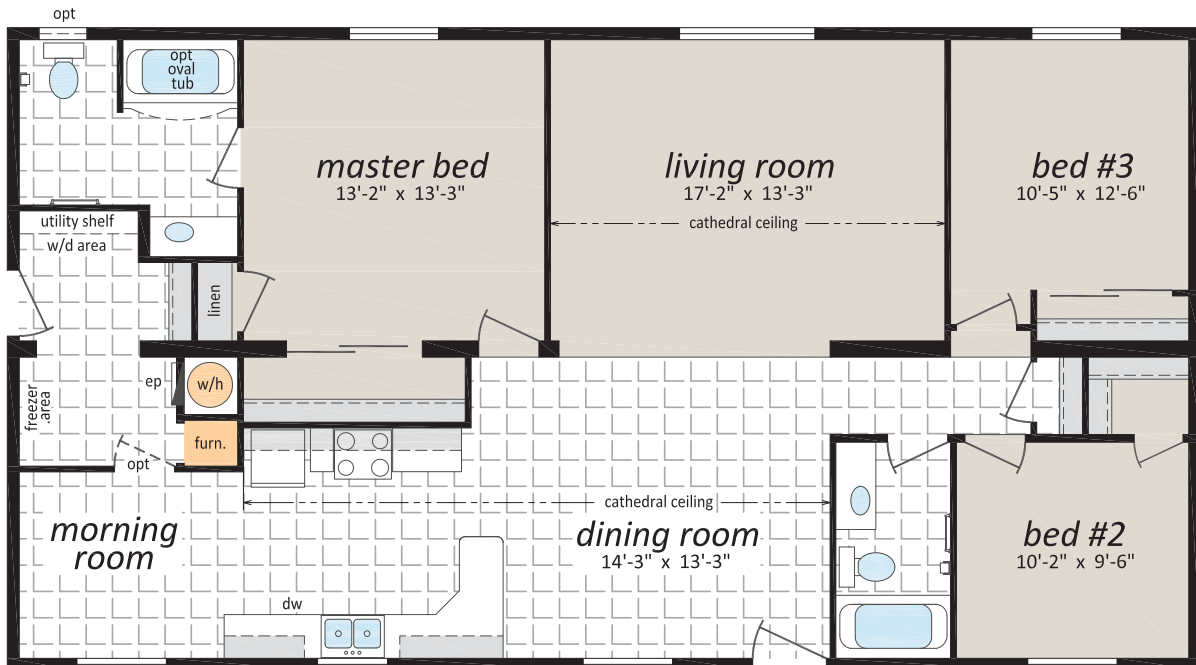


ML-28521

28' x 52' - 1,456 sq. ft.
3 Beds, 2 Baths, Morning Room



Artist Rendering;
may show optional features

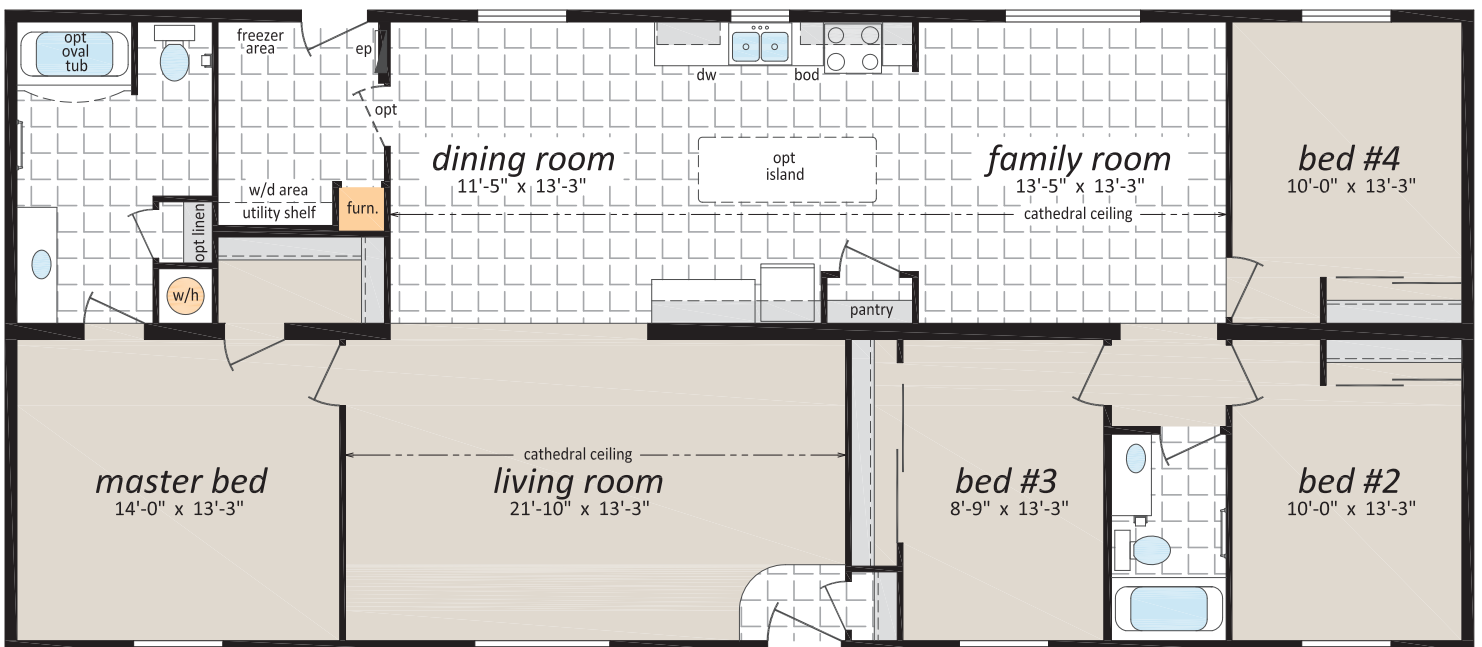


ML-28641

28' x 64' - 1,792 sq. ft.
4 Beds, 2 Baths, Family Room



Artist Rendering;
may show optional features





Eurostyle Rangehood and Pot Filler Faucet



Chevron Barn Wood Accent on Island



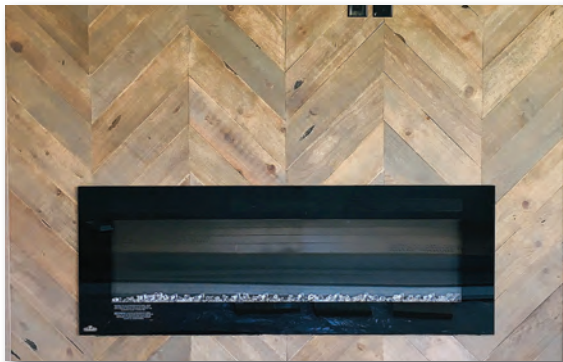
LED Lit Vanity Mirror



Barn Door Interior Door



Gas Stovetop & Deep Double Sink



Electric Fireplace with Barn Wood Accent



Orleans Coloured Exterior Door

OPTIONAL FEATURES

Exteriors

- Skylights
- Deluxe Garden Doors
- Patio Doors
- 9 Light Exterior Door
- Polyurethane Stone Accents
- Vinyl Shakes in Gable
- Octagon Windows
- Oval Exterior door w/vented sidelight
- "Panorama" Living Room Windows
c/w Diamond Cut Ceiling
- Sequoia Select Upgrade Vinyl Siding
- Turbine Vents
- Extra Exterior GFI
- High Snow Load

Interiors

- Painted Drywall Throughout Home
- Cathedral Ceiling in Master Bedroom
- Laminate Flooring
- Carpet in 2nd and 3rd Bedrooms
- French Doors
- Mirrored Closet Doors
- Freezer Cabinets
- Utility Room Door c/w Grill
- Ceiling Fan with Lights
- 2 - 4' Ceiling Mount or Recessed Fluorescent
Lights
- Decora Switch Package
- 2" PVC Blinds
- Programmable Thermostat
- Benton Style Doors

Bathroom

- Glass Mosaic Tile Back splash
- Ceramic Tile Back splash
- Jetted Oval Tub
- Jetted One Piece Tub and Shower
- 60" Shower c/w Glass Doors
- Accessible Toilet
- Grab Bars
- Full tiled shower w/sliding glass doors
- Vessel Vanity Sink w/ 90 degree Faucet

Kitchen

- Raised Panel Solid Wood Cabinet Doors
- European Stainless Steel Range hood
- Etched Glass Cabinet Doors
- China Cabinets and Hutches
- Under Cabinet Lighting
- Upgrade High Definition Laminate Counter tops
- Ceramic Tile Back splash
- Glass Mosaic Tile Back splash
- Tip Out Soap Tray Below Kitchen Sink
- 4 Bulb Track Light c/w Dimmer Switch
- 24" Fluorescent Light Above Kitchen Sink
- Pot and Pan Drawers
- Combination Microwave and Range hood
- Goose Neck Moen Faucet

Utilities

- Gas Fireplace complete with Air Circulating Fan
- Gas Water Heater
- Gas Furnace
- Oil Gun Furnace
- Self Cleaning Range
- Two Door Side By Side Refrigerator
- Handi-Hite Bottom Mount Refrigerator
- Stacking Washer and Dryer
- Front Load Washer and Dryer
- Central Vacuum System
- Roughed in for Central Vacuum
- Air Conditioner Ready Furnace
- 2 1/2 Ton Air Conditioner
- Extra Telephone Jacks
- Surge Protector
- Garage Ready Package

Check off your extras ...

... and we will take care of the rest!



The Mainline Home Series



SHELTER
HOME SYSTEMS

P.O. Box 845 #200 Hwy 18 West
Estevan, SK S4A 2A7
www.shelterhomes.ca



Authorized Retailer: