

METROPOLIS

HOME SERIES



SHELTER
HOME SYSTEMS

MODEL SPECIFICATIONS

STANDARD CONSTRUCTION

- ⇒ Limited Lifetime Architectural Shingles w/Underlayment
- ⇒ Engineered Roof Trusses
- ⇒ 12" Residential Eaves on 4 Sides
- ⇒ 6 MIL Poly Vapour Barrier in Ceiling and Sidewalls
- ⇒ White Metal Fascia
- ⇒ White Soffit
- ⇒ Cathedral Ceiling in Kitchen, Dining Room and Living Room
- ⇒ 2x6 @ 24" o.c. outside 8' Walls
- ⇒ 3/8" OSB Sheathing on Inside and Outside of Exterior Walls
- ⇒ Low Maintenance Vinyl Siding
- ⇒ 12" Tubular Laminated Steel Frame
- ⇒ I-Joist Floor (20' & 22' wide) 16" o.c.
- ⇒ 14" Engineered Open Web Floor (24' RTM), 16" o.c.
- ⇒ Tongue and Groove OSB Floor Decking; Glued and Mechanically Fastened
- ⇒ Insulation: R-40 Ceiling, R-22 Wall, R48 Floor
- ⇒ Weatherproof Exterior GFI Receptacle
- ⇒ Frost Free Tap c/w Check Valve
- ⇒ Airtight Protocols
- ⇒ 36" Insulated No Light Front Door c/w Peephole & Thumb Lever
- ⇒ 32" Insulated No Light Rear Door c/w Peephole
- ⇒ White PVC Jamb "Low E" Windows with screens; 70x60 in Living Room; White; Sliding 46x42 in Bedrooms and Kitchen; White; Sliding 46x52 in Dining Area; White; Sliding
- ⇒ (RTM Model only) Hangered floor on a single LVL rim joist; double LVL required if going on perimeter piles

KITCHEN

- ⇒ Fench Door Fridge w/ Water & Ice - Print Resistant Stainless
- ⇒ Cooktop: 30" Electric Cooktop - Stainless Steel
- ⇒ Oven: Eye Level Oven - Print Resistant Stainless Steel
- ⇒ Dishwasher: Print Resistant Stainless Steel
- ⇒ Range Hood: Eropean Style Stainless Steel
- ⇒ Sink: Two Bowl Undermount - Stainless Steel
- ⇒ Faucet: MOEN Goose Neck - Chrome

BATH

- ⇒ Tub/Shower: One Piece Fiberglass
- ⇒ Sink: White Oval, Undermount w/Single Lever Faucet - Chrome
- ⇒ Toilet: Single Flush, Lined Tank, Low Volume, White
- ⇒ Two Vanity Sinks in Ensuite
- ⇒ Bathroom Faucets - MOEN 90 DG Chrome
- ⇒ Framed Mirror with Flatstock above each Vanity Sink
- ⇒ Shower Rod and Curtain Liner in all bathrooms
- ⇒ Chrome Towel Bar and Paper Holder
- ⇒ GFI Receptacles
- ⇒ Dehumidistat on Main Bath Fan

EXTERIOR FEATURES

- ⇒ Smart Trim Around Windows & Doors
- ⇒ Side Gable Above Living Room Window
- ⇒ Covered Deck with treated lumber and White Railing (24' RTM only)

INTERIOR FINISH

- ⇒ Spraytex 1/2" Gyproc Ceilings
- ⇒ 100% Polyurethane Carpet in Bedrooms/Office, incl. Closets
- ⇒ No Wax Vinyl Flooring in Bathrooms, Utility Room and Family Room
- ⇒ Vinyl Plank In Kitchen, Dining Room, Living Room Hallways Incl. Pantry
- ⇒ Wall Finish: Decorative Vinyl Over Gyproc (VOG)
- ⇒ Taped Battens on VOG Joints
- ⇒ Ceiling Trim: 451 Profile White
- ⇒ Baseboards: Flatstock Profile White
- ⇒ Window/Door Trim: Flatstock Profile White
- ⇒ Closets: Battens Throughout
- ⇒ Pewter Interior Door Hardware Throughout with Lever Handles
- ⇒ Pre-finished White Embossed Interior Doors
- ⇒ Solid Closet Shelving
- ⇒ Cellular Translucence Shades Throughout
- ⇒ Decora Switch Package
- ⇒ Modular Cabinets with Roller Drawer Hardware
- ⇒ PVC Wrap Cabinet Doors with Pewter Euro Style Handles
- ⇒ Cabinet Crown Moulding: 510 Profile
- ⇒ Countertop: Acrylic Solid Surface
- ⇒ Backsplash Kitchen: Full Tile White Subway - White Grout
- ⇒ Backsplash Bathrooms: 3" Acrylic
- ⇒ Utility Cabinets Above Washer and Dryer
- ⇒ Two Bank of Drawers; Kitchen & Ensuite
- ⇒ Soft Close Cabinet Doors & Drawers
- ⇒ Linen Closet

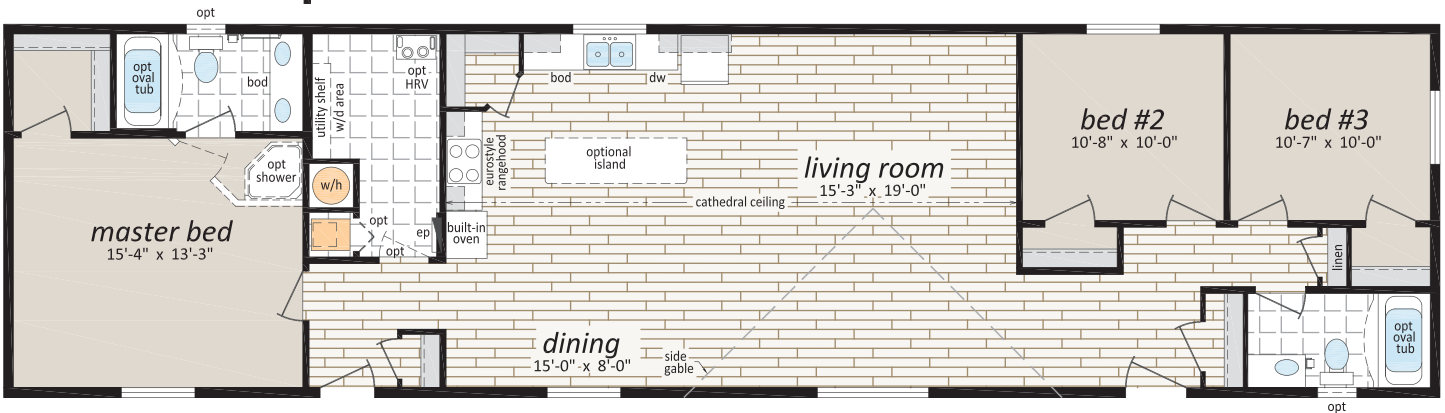
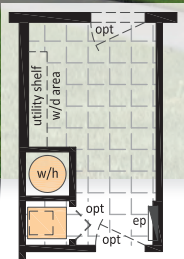
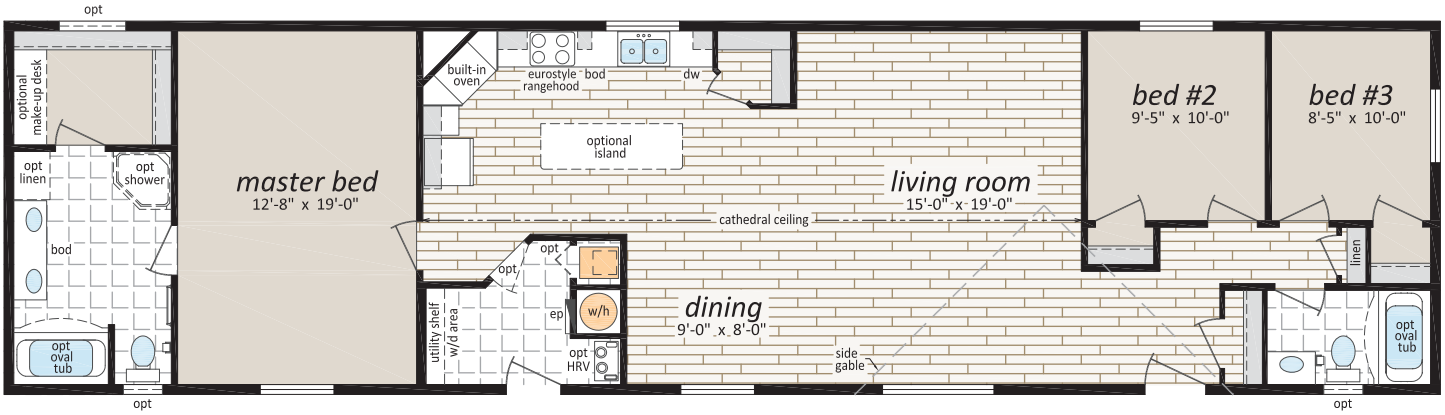
UTILITIES

- ⇒ 40 GI Natural Gas Water Heater
- ⇒ High Efficiency Natural Gas Furnace - Convertible
- ⇒ 100 Amp Electric Service Panel
- ⇒ Electric Conduit Through Floor
- ⇒ LED Light Bulb Package
- ⇒ Programmable Thermostat
- ⇒ Copper Wiring Throughout
- ⇒ Plumbed and Wired for Side by Side Washer and Dryer
- ⇒ Shut Off Valves on all Fixtures
- ⇒ Insulated Water Lines in Water Heater Cavity
- ⇒ Smoke/CO Alarms with Battery Back Up in Hallways
- ⇒ Smoke Alarms (all bedrooms)

METROPOLIS

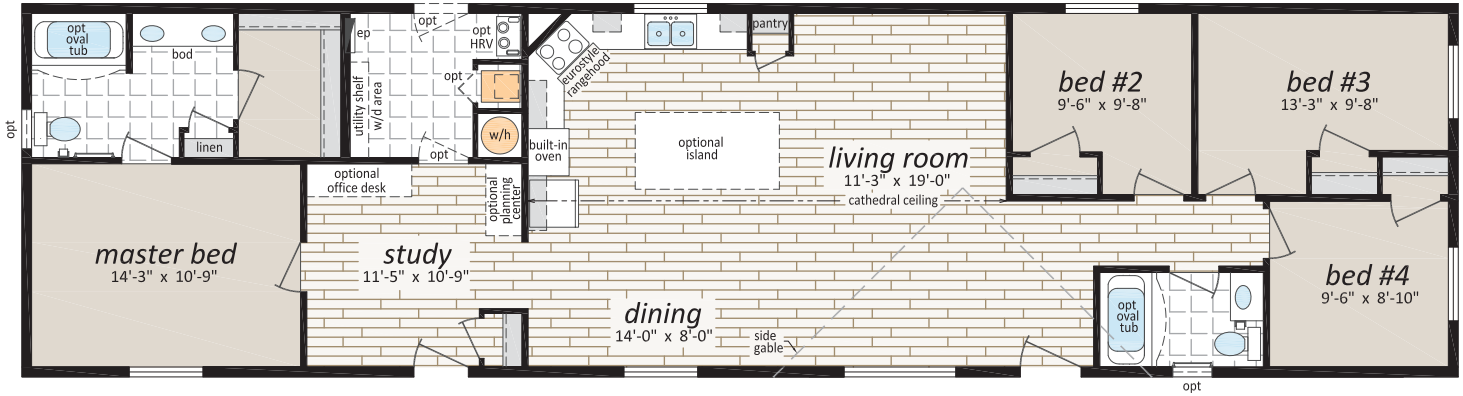
20' WIDES

MT-207601
 20' x 76' - 1,520 SQ.FT.
 3 BEDS, 2 BATHS

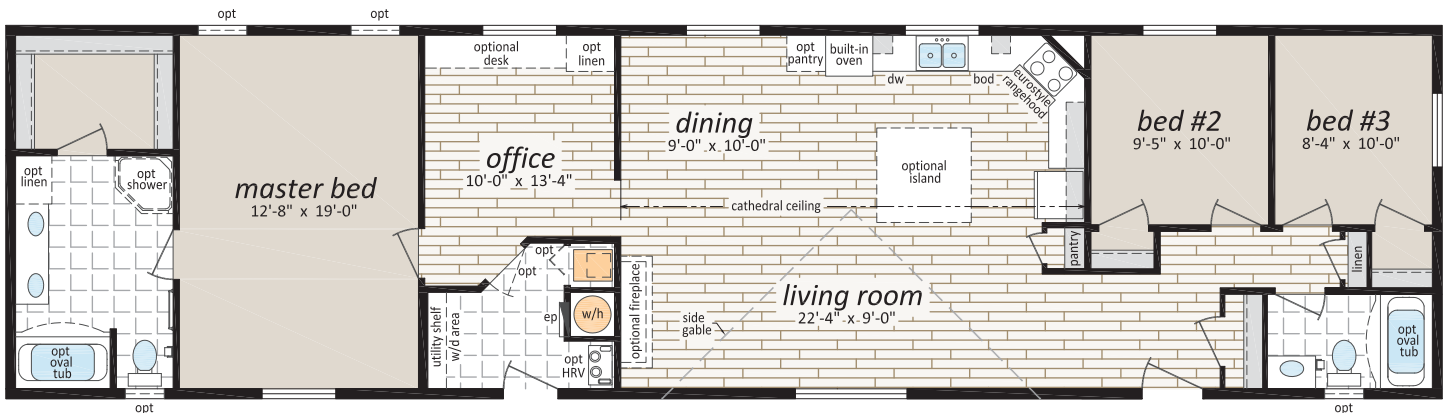


METROPOLIS

MT-207603
 20' x 76' - 1,520 SQ.FT.
 4 BEDS, 2 BATHS, STUDY



MT-207604
 20' x 76' - 1,520 SQ.FT.
 3 BEDS, 2 BATHS, OFFICE

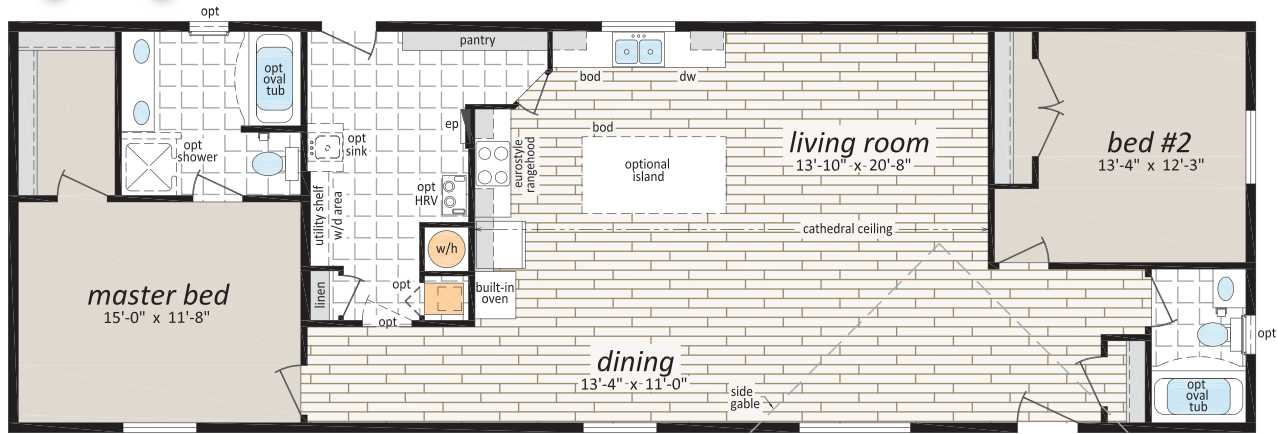


22' WIDES

MT-226601

22' x 66' - 1,452 SQ.FT.

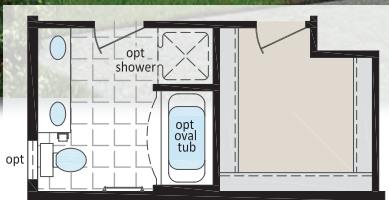
2 BEDS, 2 BATHS, WALK THROUGH PANTRY



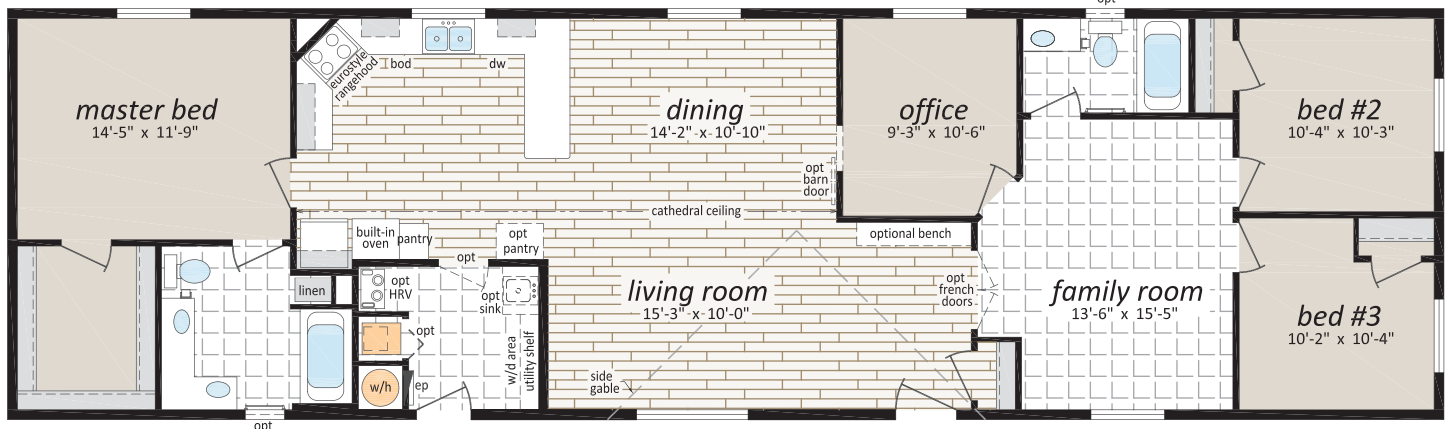
MT-227601

22' x 76' - 1,672 SQ.FT.

3 BEDS, 2 BATHS, OFFICE, FAMILY ROOM



Optional Ensuite and Walk-in Closet



METROPOLIS



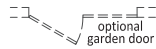
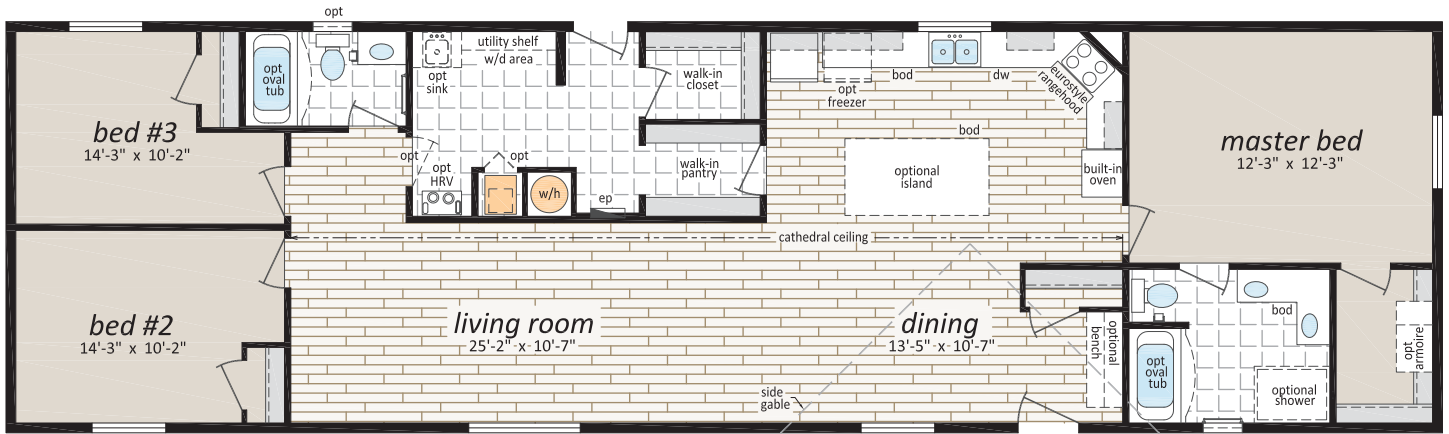
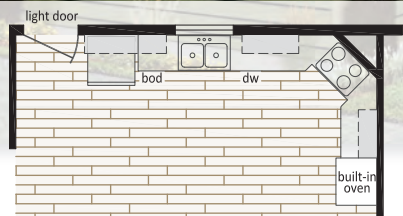
MT-227602

22' x 76' - 1,672 SQ.FT.

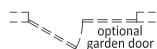
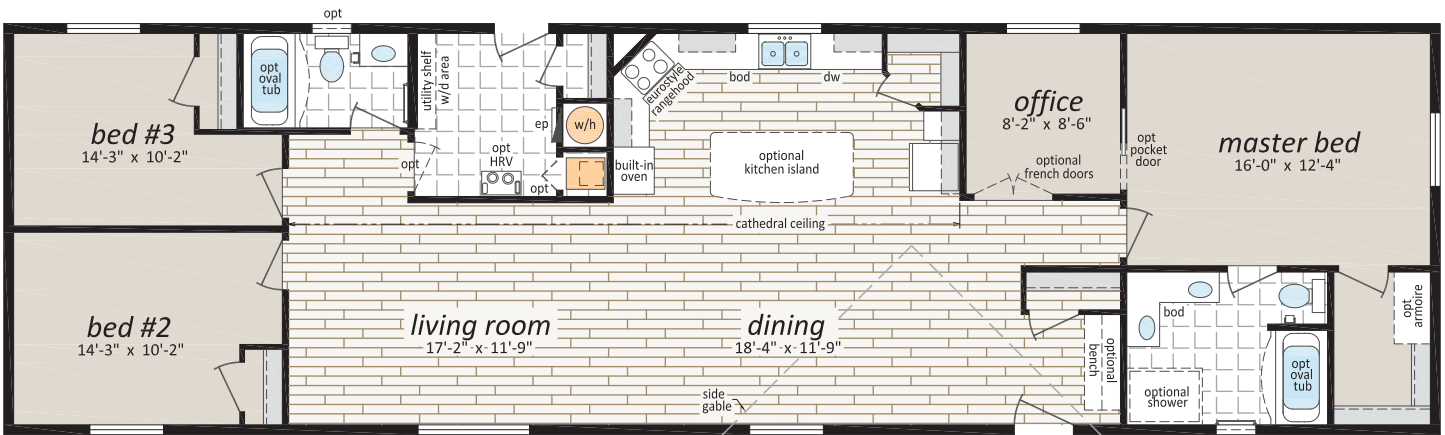
3 BEDS, 2 BATHS

Artist Rendering; may show optional features

Optional Kitchen



MT-227603
22' x 76' - 1,672 SQ.FT.
3 BEDS, 2 BATHS, OFFICE

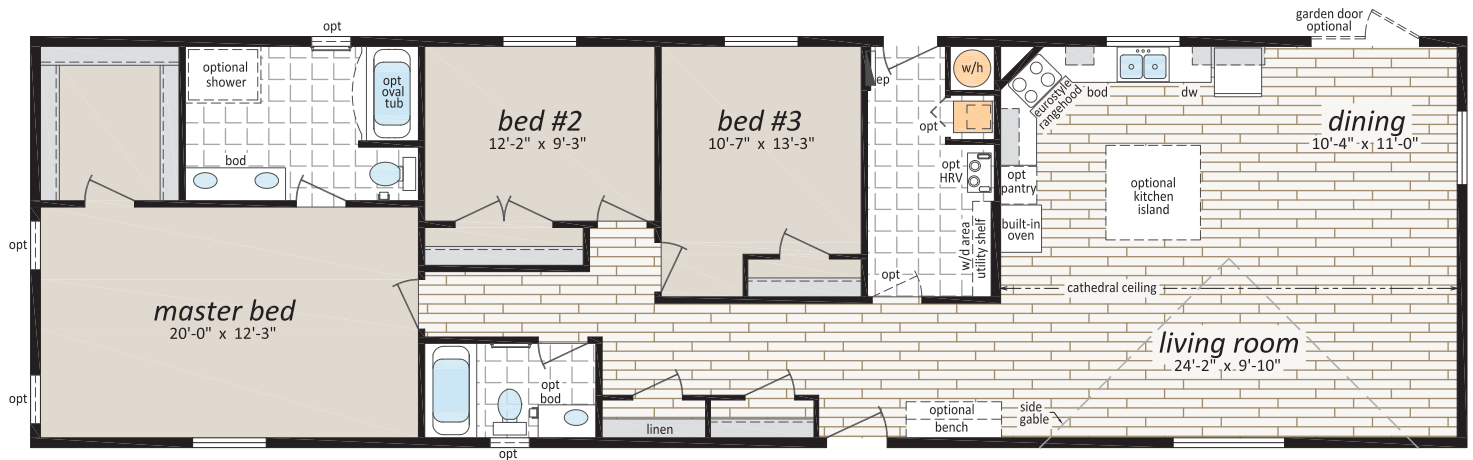


METROPOLIS

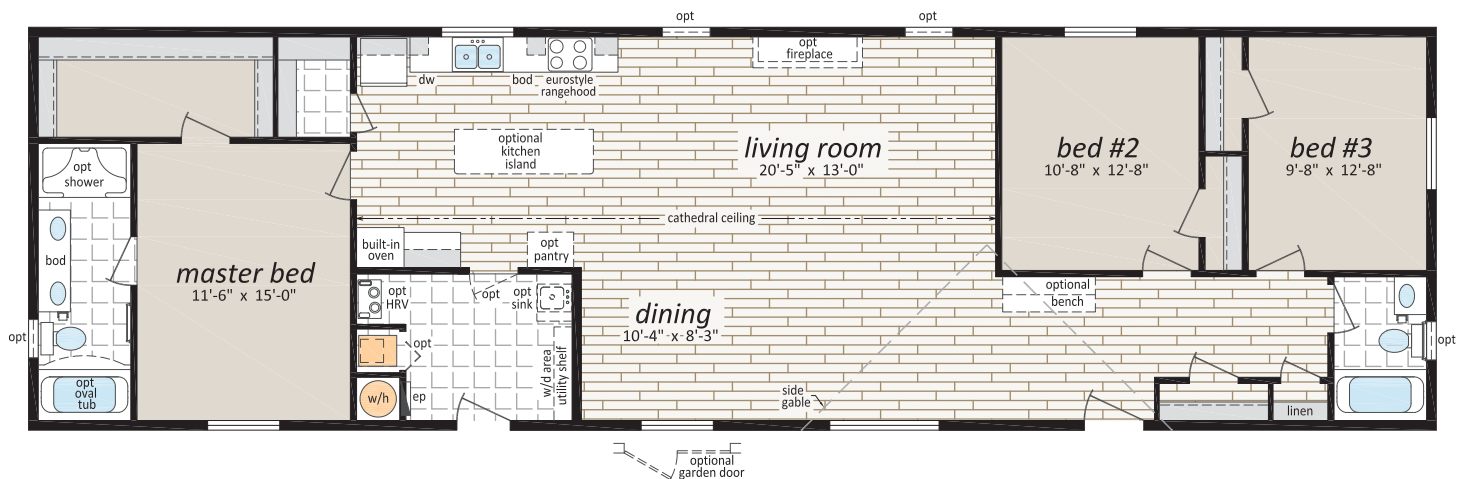


MT-227604
22' x 76' - 1,672 SQ.FT.
3 BEDS, 2 BATHS

Artist Rendering;
may show optional features



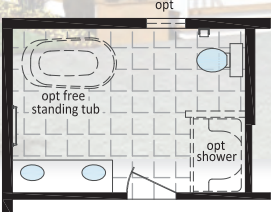
MT-227605
22' x 76' - 1,672 SQ.FT.
3 BEDS, 2 BATHS





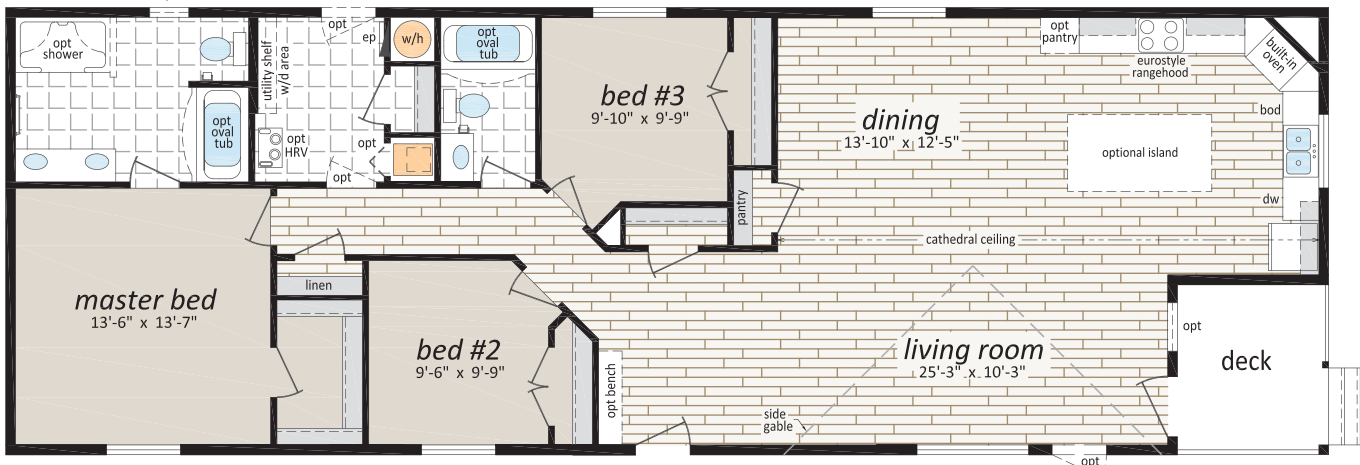
MT-247001
 24' x 70' - 1,680 SQ.FT.
 3 BEDS, 2 BATHS, DECK

24' WIDES

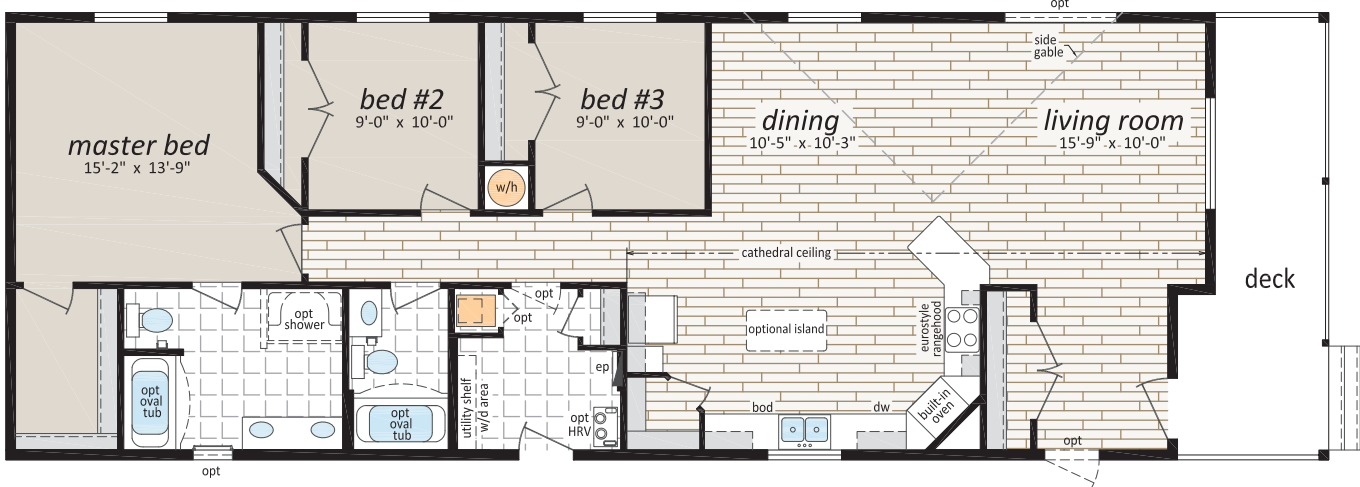


Optional Ensuite

Artist Rendering; may show optional features



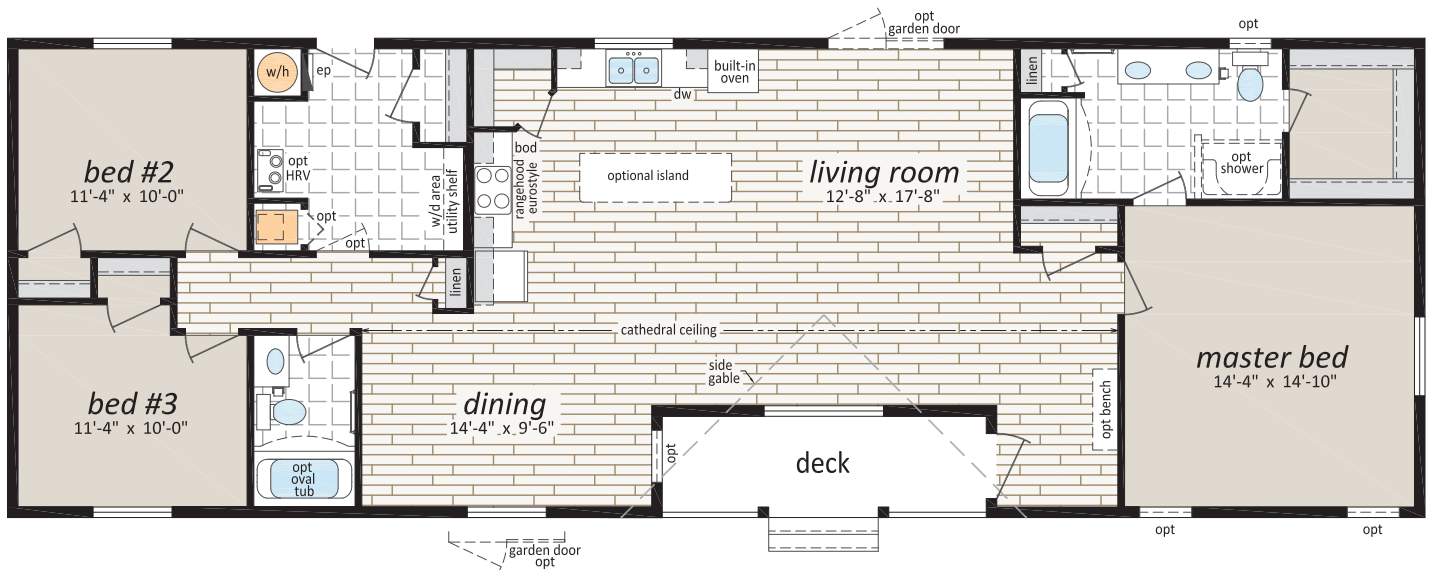
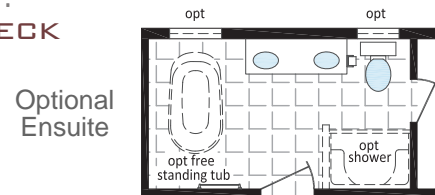
MT-247002
 24' x 70' - 1,680 SQ.FT.
 3 BEDS, 2 BATHS, DECK





Artist Rendering; may show optional features

MT-247003
 24' x 70' - 1,680 SQ.FT.
 3 BEDS, 2 BATHS, DECK



OPTIONAL FEATURES

EXTERIORS

- Skylights
- Deluxe Garden Doors
- 9 Light Exterior Door
- Polyurethane Stone Accents
- Octagon Windows
- Oval Exterior door w/vented sidelight
- "Panorama" Living Room Windows
c/w Diamond Cut Ceiling
- Sequoia Select Upgrade Vinyl Siding
- Turbine Vents
- Extra Exterior GFI
- High Snow Load

INTERIORS

- Painted Drywall Throughout Home
- Cathedral Ceiling in Master Bedroom
- Laminate Flooring
- Carpet in 2nd and 3rd Bedrooms
- French Doors
- Mirrored Closet Doors
- Freezer Cabinets
- Utility Room Door c/w Grill
- Ceiling Fan with Lights
- 2 - 4' Ceiling Mount or Recessed Fluorescent
Lights
- Decora Switch Package
- 2" PVC Blinds
- Programmable Thermostat
- Benton Style Doors

BATHROOM

- Glass Mosaic Tile Back splash
- Ceramic Tile Back splash
- Jetted Oval Tub
- Jetted One Piece Tub and Shower
- 60" Shower c/w Glass Doors
- Accessible Toilet
- Grab Bars
- Full tiled shower w/sliding glass doors
- Vessel Vanity Sink w/ 90 degree Faucet

KITCHEN

- Raised Panel Solid Wood Cabinet Doors
- European Stainless Steel Range hood
- Etched Glass Cabinet Doors
- China Cabinets and Hutches
- Under Cabinet Lighting
- Upgrade High Definition Laminate Counter tops
- Ceramic Tile Back splash
- Glass Mosaic Tile Back splash
- Tip Out Soap Tray Below Kitchen Sink
- 4 Bulb Track Light c/w Dimmer Switch
- 24" Fluorescent Light Above Kitchen Sink
- Pot and Pan Drawers
- Combination Microwave and Range hood
- Goose Neck Moen Faucet

UTILITIES

- Gas Fireplace complete with Air Circulating Fan
- Gas Water Heater
- Electric Furnace
- Oil Gun Furnace
- Self Cleaning Range
- Two Door Side By Side Refrigerator
- Handi-Hite Bottom Mount Refrigerator
- Front Load Washer and Dryer
- Central Vacuum System
- Roughed in for Central Vacuum
- Air Conditioner Ready Furnace
- 2 1/2 Ton Air Conditioner
- Extra Telephone Jacks
- Surge Protector
- Garage Ready Package

CHECK OFF YOUR EXTRAS ...

... AND WE WILL TAKE CARE
OF THE REST!



METROPOLIS

HOME SERIES



Authorized Retailer:



SHELTER
HOME SYSTEMS

P.O. Box 845 #200 Hwy 18 West
ESTEVAN, SK S4A 2A7
WWW.SHELTERHOMES.CA



This is not a fully detailed specification. SRI Homes reserves the right to change specifications, designs, materials and suppliers without notice and without incurring obligation. Information contained herein is from data available at the time of printing. Square footage and dimensions are approximate. Photos and renderings may show optional features. 11/23

