

Statesman

Home Series

SHELTER
HOME SYSTEMS



Standard Specifications

Standard Construction

- ⇒ Limited Lifetime Architectural Shingles w/ Underlayment
- ⇒ Engineered Roof Trusses
- ⇒ Nominal 4/12 Fixed Pitch for <28' Wides
- ⇒ 3/12 Fixed Roof for 28' - 30' Wides
- ⇒ 4/12 Hinged Roof For >30' Wides
- ⇒ 12" Residential Eaves on 3 Sides (4 Sides on Sectionals)
- ⇒ 6 MIL Poly Vapour Barrier in Ceiling and Sidewalls
- ⇒ White Metal Fascia
- ⇒ White Soffit
- ⇒ Cathedral Ceiling in Kitchen, Dining Room and Living Room
- ⇒ 8' Walls
- ⇒ 2 x 6 @ 24" O.C. Outside Walls
- ⇒ 3/8" OSB Sheathing On Inside And Outside Of Ext. Walls
- ⇒ Low Maintenance Vinyl Siding
- ⇒ Tubular Laminated Steel Frame: 8" (<16'x68') or 12" (>16'x68')
- ⇒ 2 x 10 Floor Joists (16' wide) 16" O.C.
- ⇒ I-Joist Floor (20' & 22' wide) 16" O.C.
- ⇒ T&G OSB Floor Decking; Glued And Mechanically Fastened
- ⇒ Insulation: R-40 Ceiling, R-22 Wall, R-48 Floor
- ⇒ Weatherproof exterior GFI Receptacle
- ⇒ Frost Free Tap c/w Check Valve
- ⇒ Coach Lights At All Exterior Doors
- ⇒ Airtight Protocols
- ⇒ Windows (1.4 U-Value | PVC Jamb | LowE | w/Screen):
 - 70x52 In Living Room; White; Sliding
 - 46x42 In Bedrooms; White; Sliding
 - 46x52 In Dining Area; White; Sliding
 - 30x36 In Kitchen; White; Sliding
- ⇒ 36" Insulated No Light Exterior Front Door c/w Peephole & Storm Doors
- ⇒ 32" Insulated No Light Rear Exterior Door c/w Peephole & Storm Doors
- ⇒ LED Exterior Pot Light At Each Exterior Door

Exterior Features

- ⇒ Side Gable (Single Wide's Only)
- ⇒ Smart Start Pillars At Side Gable
- ⇒ False Gable on Front of Home (single wides only)
- ⇒ Smart Start Around Windows

Kitchen

- ⇒ 18 CU. FT. Two Door Fridge - Top Freezer - White
- ⇒ 30" Electric Range - White
- ⇒ Range Hood: Two Speed, Vented To Exterior, White
- ⇒ Sink: Two Bowl Stainless Steel Sink w/Single Lever Faucet - Chrome

Bath

- ⇒ Tub/Shower: One Piece Fiberglass In All Bathrooms
- ⇒ Sink: White Oval, Drop In w/Single Lever Faucet - Chrome
- ⇒ Toilet: Single Flush, Lined Tank, White
- ⇒ Shower Rod and Curtain Liner in all Bathrooms
- ⇒ Chrome Towel Bar and Paper Holder
- ⇒ GFI Recetpacles
- ⇒ Dehumidistat on Main Bath Fan

Interior Finish

- ⇒ Spraytex 1/2" Gyproc Ceilings
- ⇒ 100% Polyurethane Carpet in L/R and BDRMS
- ⇒ No Wax Vinyl Flooring In Areas Without Carpet
- ⇒ Wall Finish: Decorative Vinyl Over Gyproc (VOG)
- ⇒ Battens On VOG Joints
- ⇒ Ceiling Trim: 1-1/2" Battens
- ⇒ Baseboards: 356 Profile White
- ⇒ Window/Door Trim: 356 Profile White
- ⇒ Closets: Battens Throughout
- ⇒ Pewter Interior Door Hardware T/O - Lever Handles
- ⇒ Pre-finished White Flat Interior Doors
- ⇒ Solid Closet Shelving
- ⇒ Toggle Light Switches
- ⇒ Cabinets:
 - Modular Cabinets w/Roller Drawer Hardware
 - PVC Wrap Cabinet Doors w/Pewter Knobs
 - Cabinet Crown Moulding: Optional
 - 3" White Subway Tile Backsplash (White Grout)
 - Laminated Countertop
 - Glass Doors In Upper Cabinets Over Bar

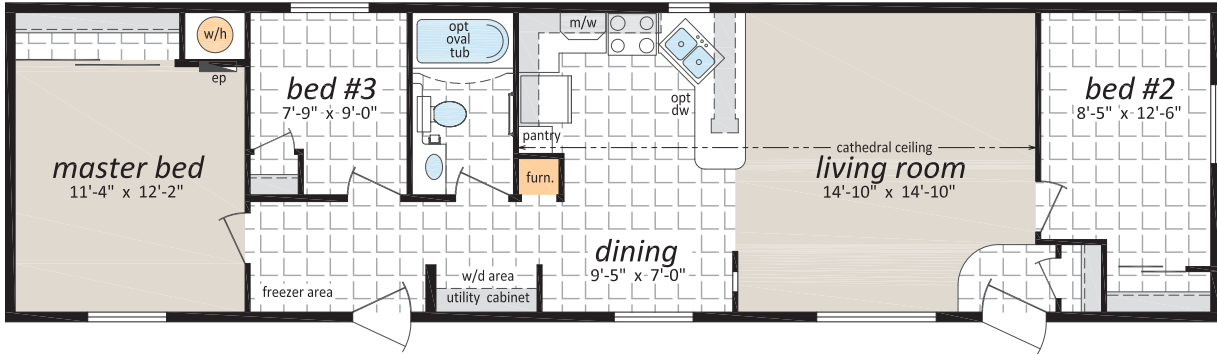
Utilities

- ⇒ 40 GL Natural Gas Water Heater
- ⇒ High Efficiency Natural Gas Furnace - Convertible
- ⇒ 100 Amp Electric Service Panel
- ⇒ Electric Conduit Through Floor
- ⇒ Incandescent Light Bulb Package
- ⇒ Programmable Thermostat
- ⇒ Copper Wiring Throughout
- ⇒ Plumbed & Wired For Side By Side Washer & Dryer
- ⇒ Shut Off Valves On All Fixtures
- ⇒ Insulated Water Lines In W/H Cavity
- ⇒ Smoke/CO Alarms w/Battery back up in Hallways
- ⇒ Smoke Alarms in all Bedrooms
- ⇒ Solid Shelf Above Washer/Dryer Area

ST-401

16' x 60' 960 sq. ft.

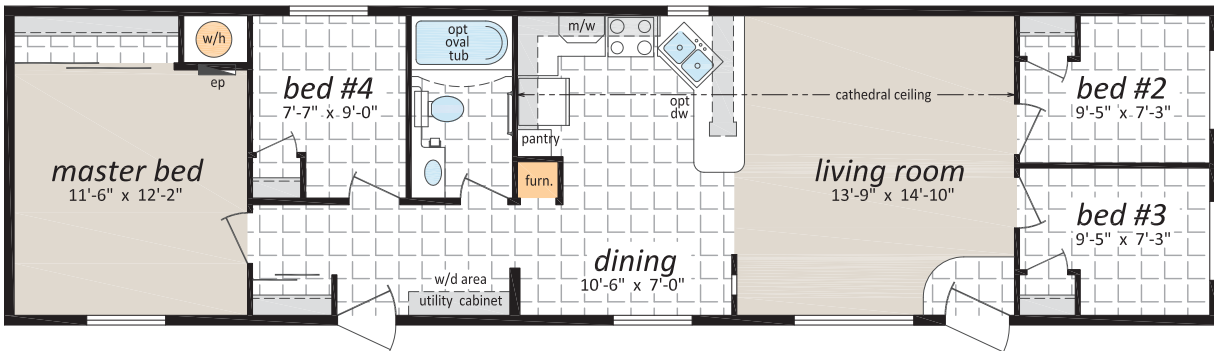
3 Beds, 1 Bath



ST-403

16' x 60' 960 sq. ft.

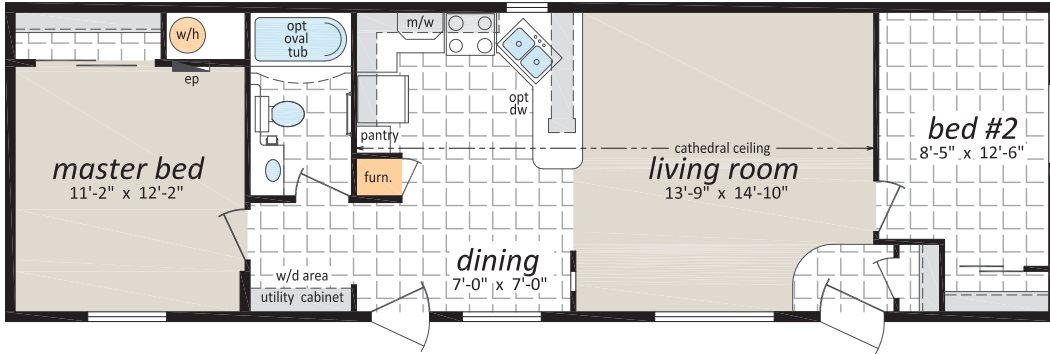
4 Beds, 1 Bath



ST-405

16' x 52' 832 sq. ft.

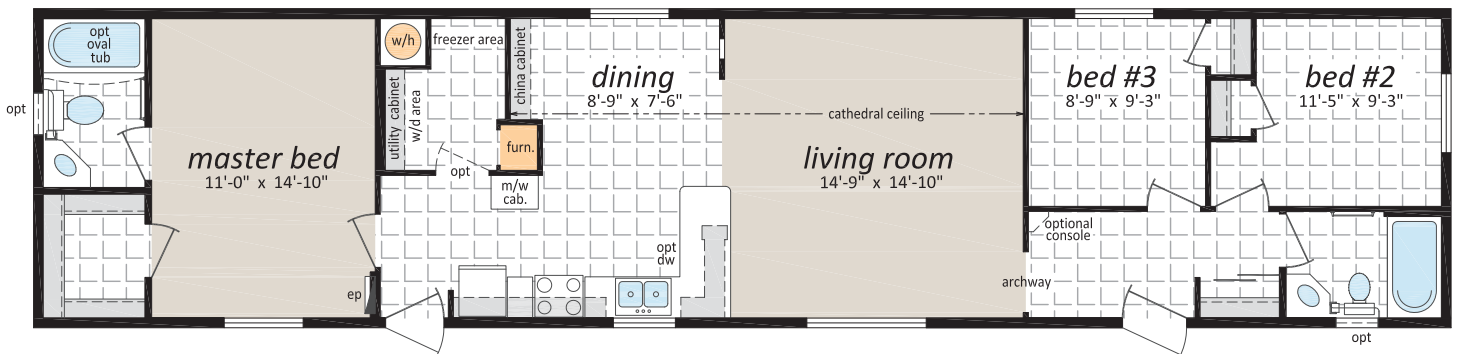
2 Beds, 1 Bath



ST-406

16' x 70' 1,120 sq. ft.

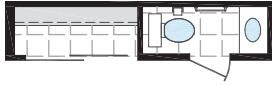
3 Beds, 2 Baths



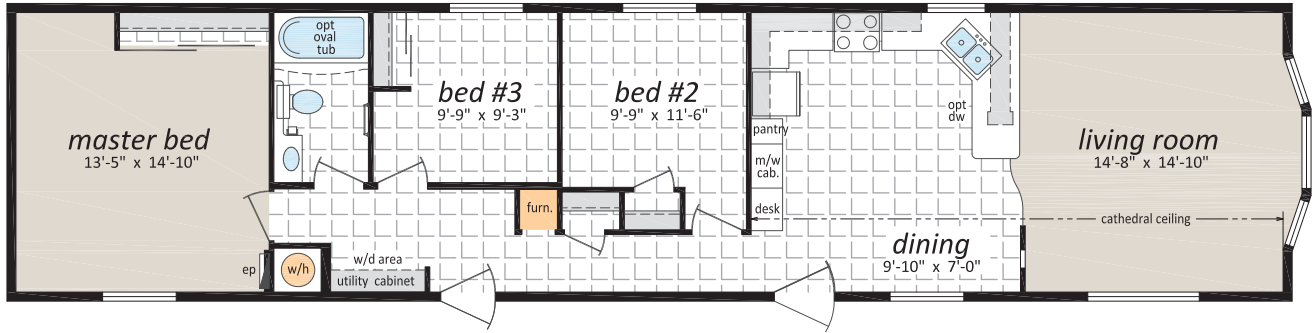
ST-409

16' x 68' 1,088 sq. ft.

3 Beds, 1 Bath



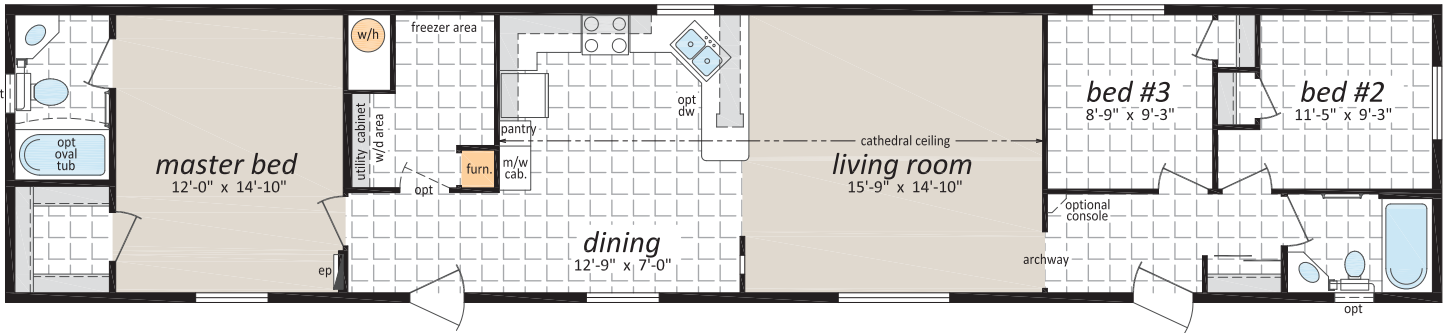
Optional
Ensuite



ST-411

16' x 76' 1,216 sq. ft.

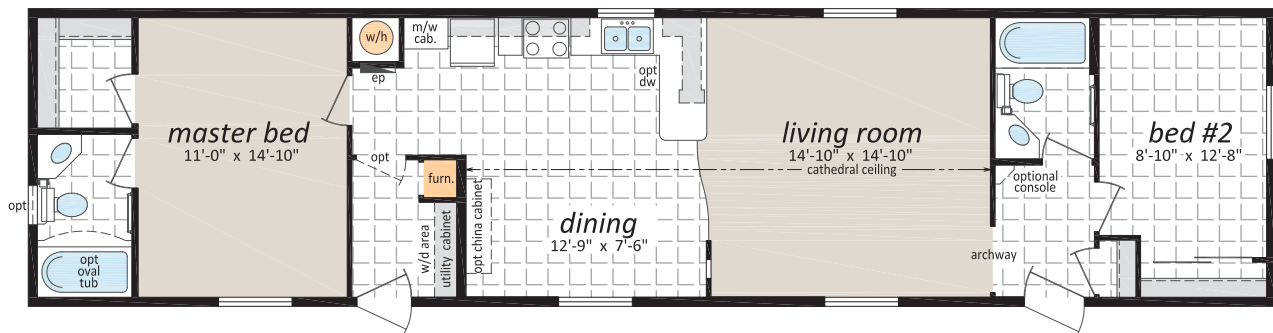
3 Beds, 2 Baths



ST-413

16' x 66' 1,056 sq. ft.

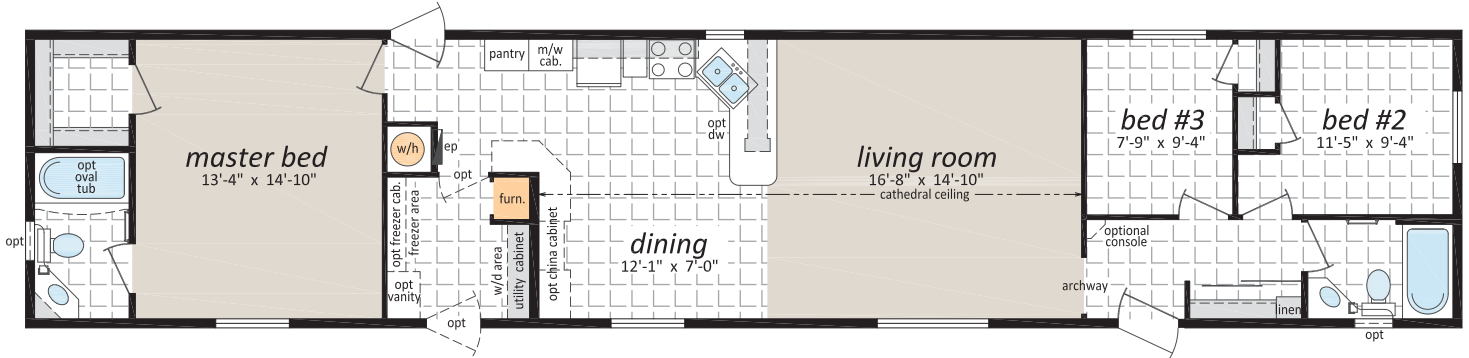
2 Beds, 2 Baths



ST-414

16' x 76' 1,216 sq. ft.

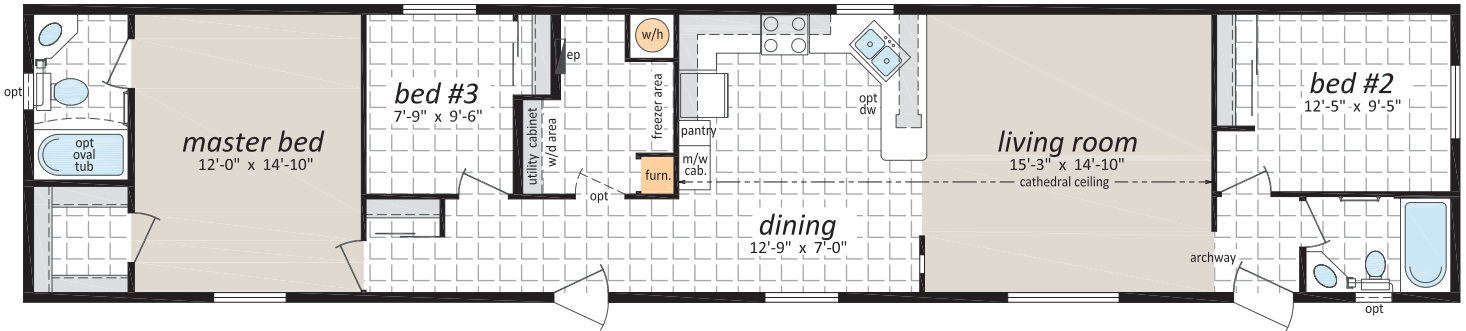
3 Beds, 2 Baths



ST-417

16' x 76' 1,216 sq. ft.

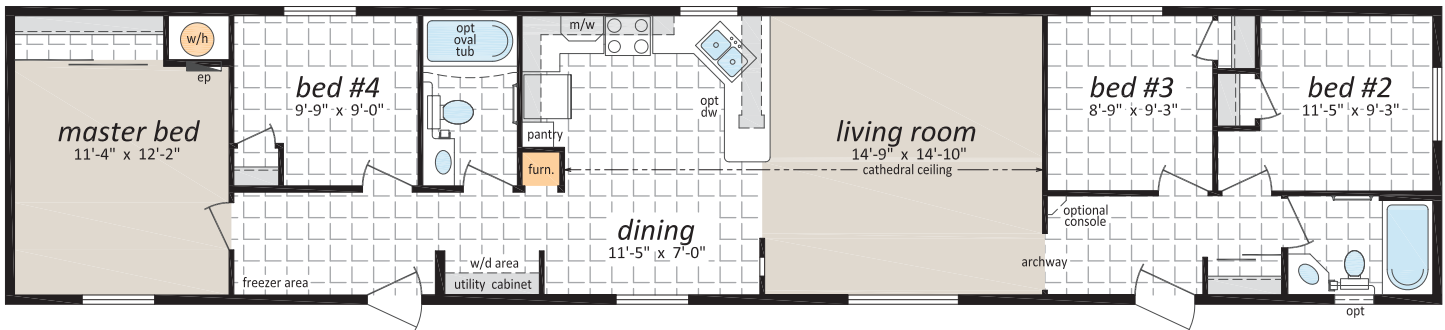
3 Beds, 2 Baths



ST-418

16' x 76' 1,216 sq. ft.

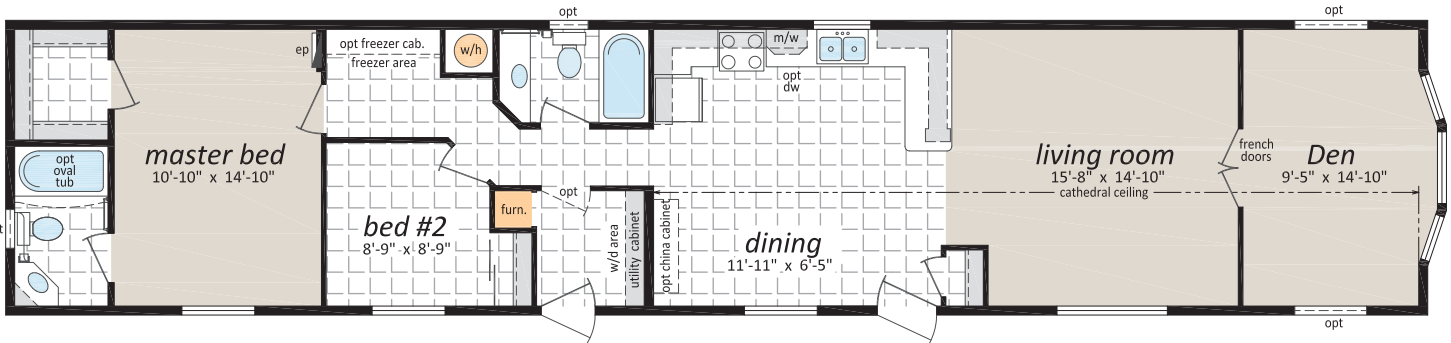
4 Beds, 2 Baths



ST-479

16' x 76' 1,216 sq. ft.

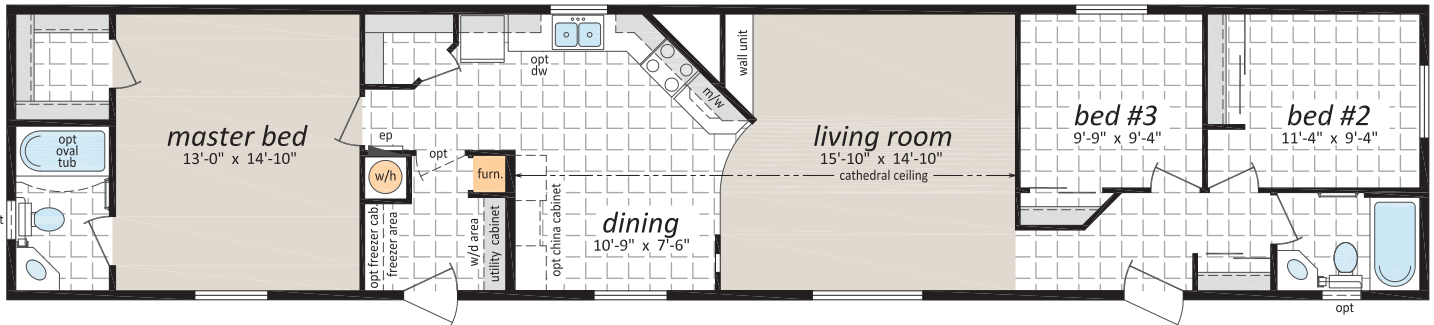
2 Beds, 2 Baths, Den



ST-480

16' x 76' 1,216 sq. ft.

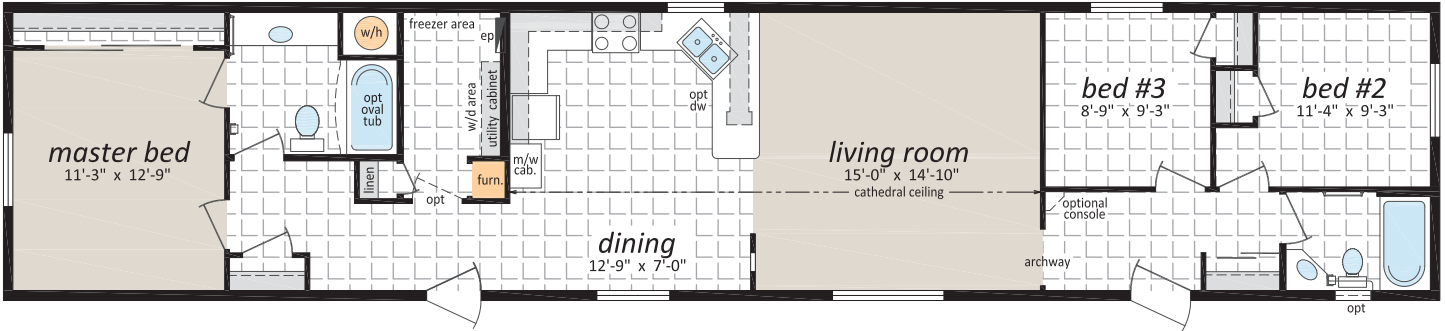
3 Beds, 2 Baths



ST-481

16' x 76' 1,216 sq. ft.

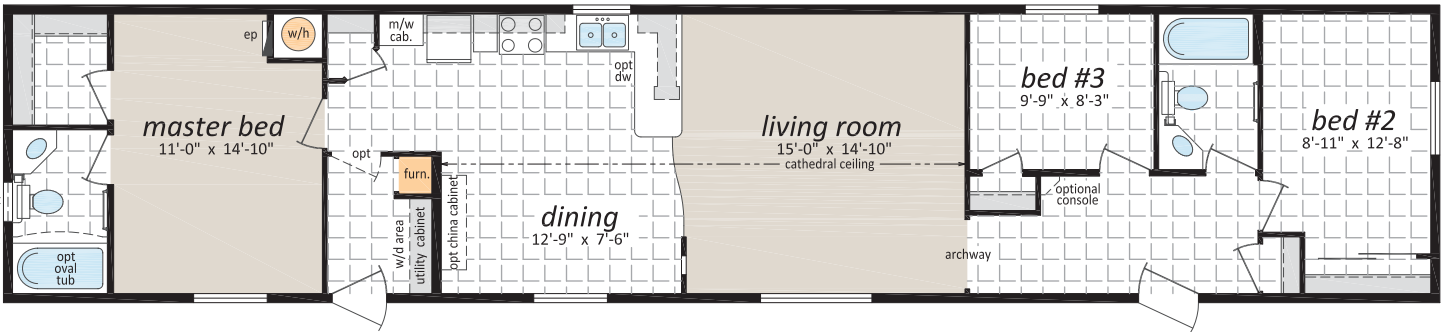
3 Beds, 2 Baths



ST-483

16' x 76' 1,216 sq. ft.

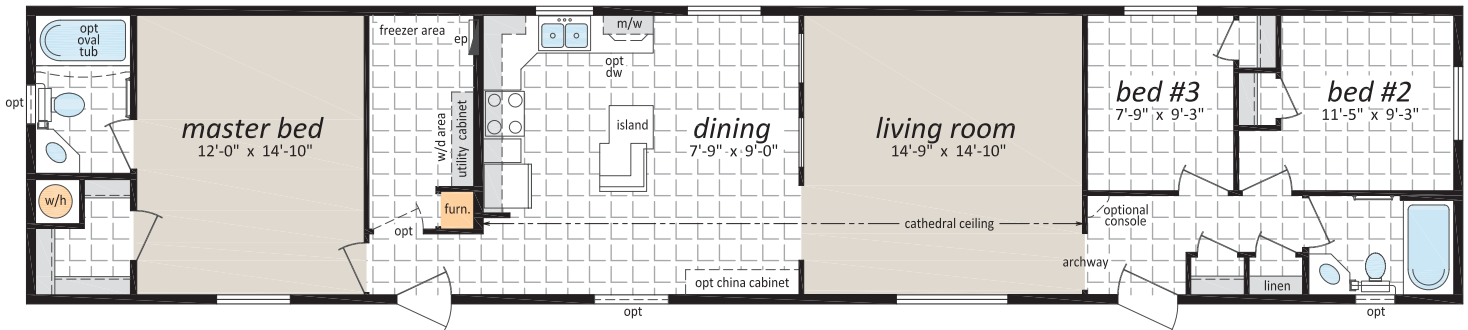
3 Beds, 2 Baths



ST-484

16' x 76' 1,216 sq. ft.

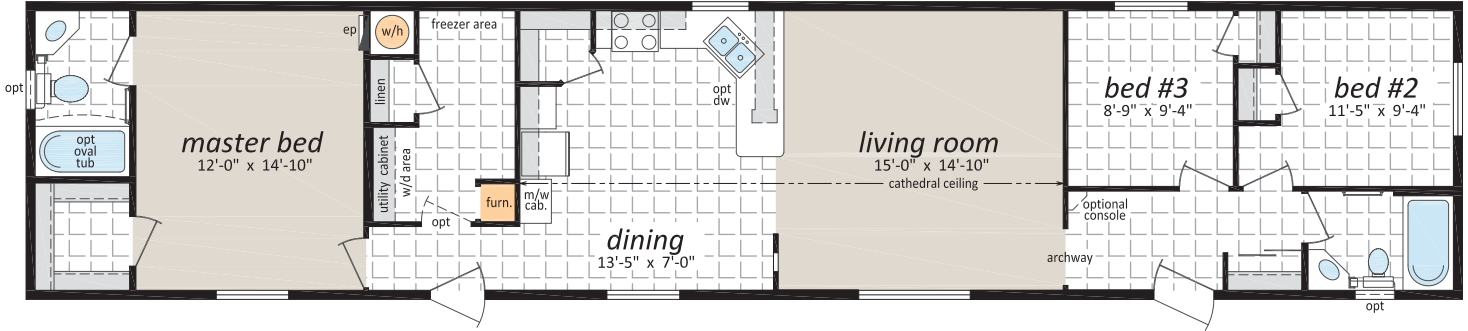
3 Beds, 2 Baths



ST-485

16' x 76' 1,216 sq. ft.

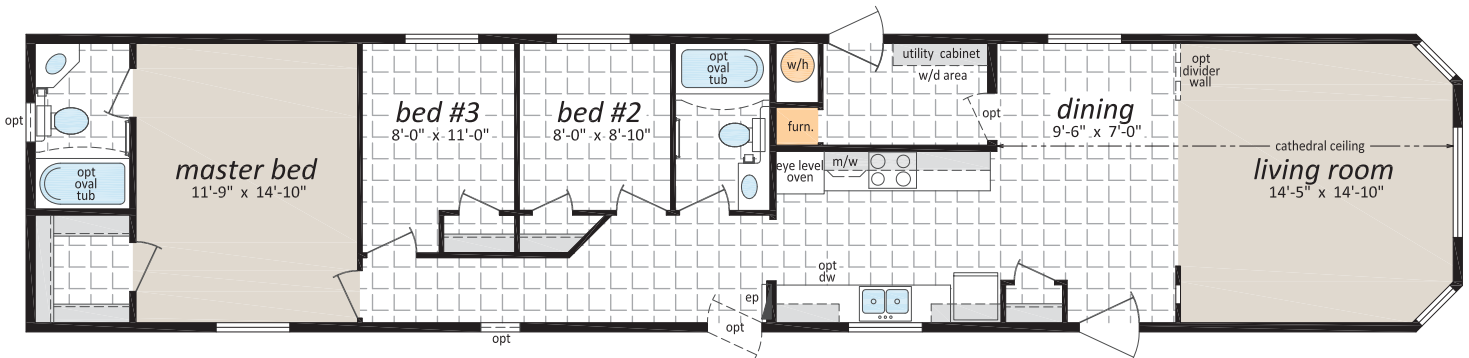
3 Beds, 2 Baths



ST-487

16' x 76' 1,216 sq. ft.

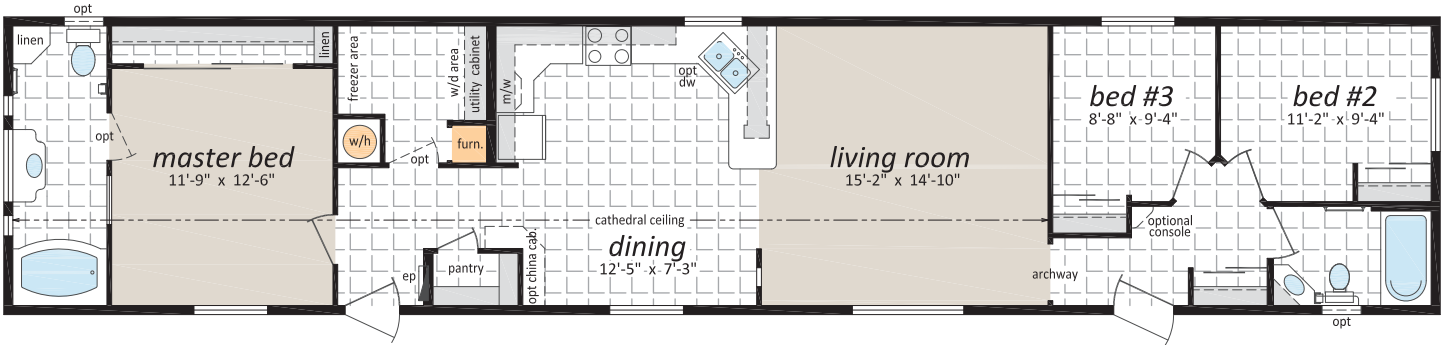
3 Beds, 2 Baths



ST-491

16' x 76' 1,216 sq. ft.

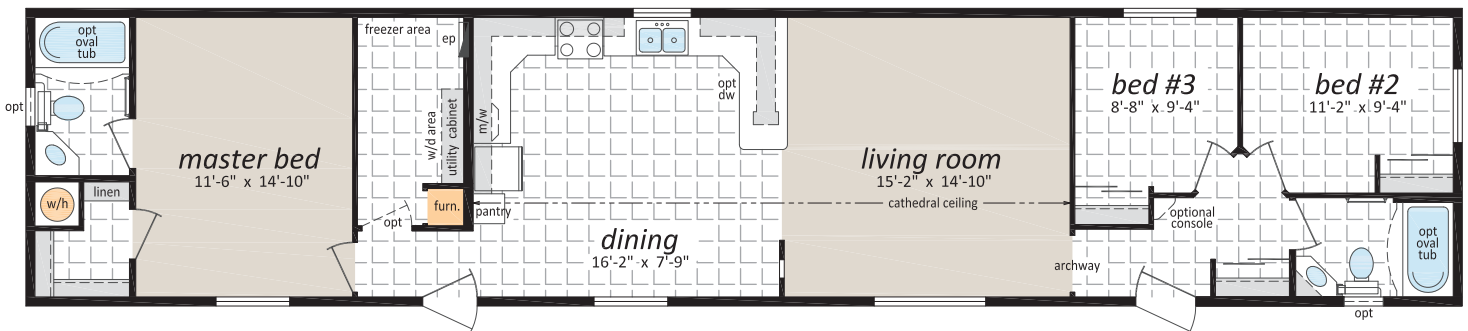
3 Beds, 2 Baths



ST-497

16' x 76' 1,216 sq. ft.

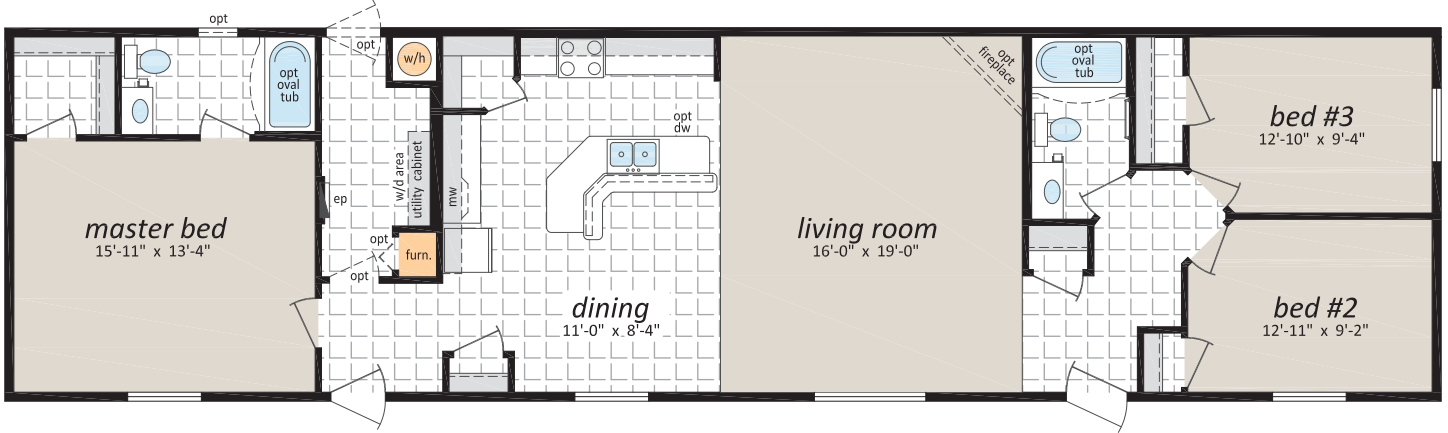
3 Beds, 2 Baths



AVS-20625

20' x 76' 1,520 sq. ft.

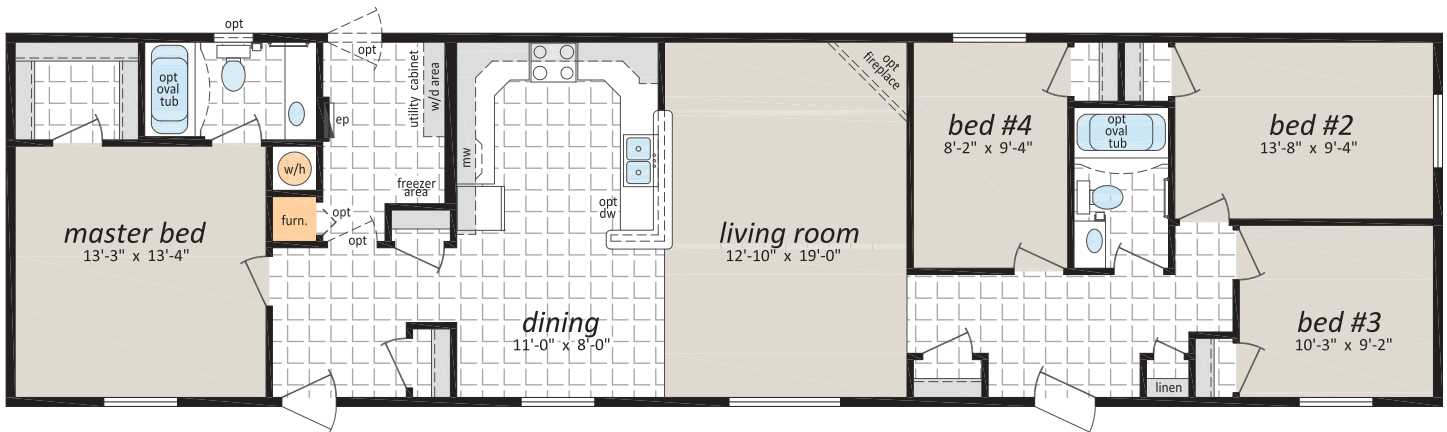
3 Beds, 2 Baths



AVS-20626

20' x 76' 1,520 sq. ft.

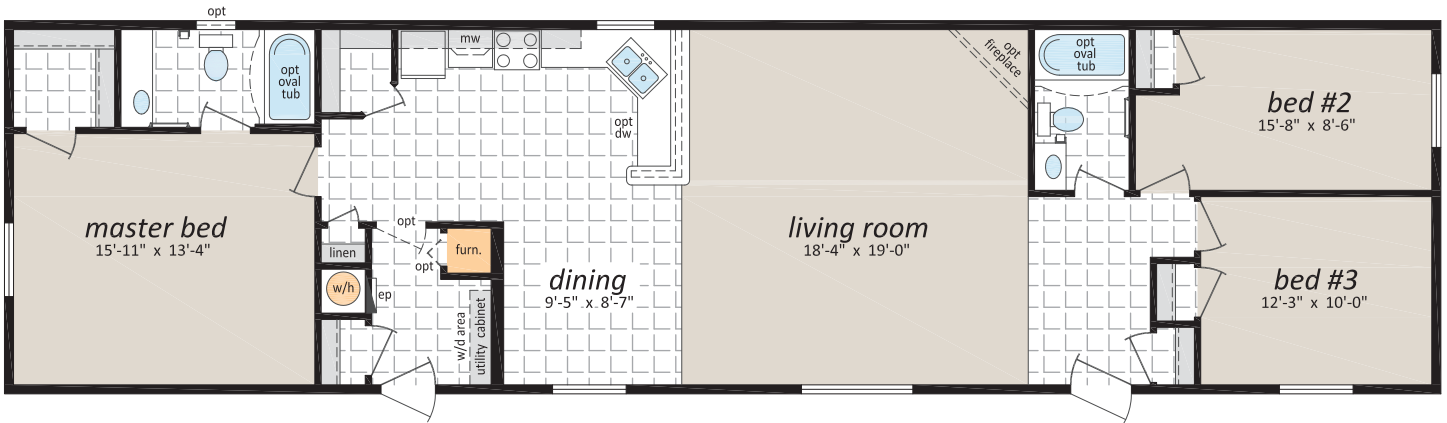
4 Beds, 2 Baths



AVS-20627

20' x 76' 1,520 sq. ft.

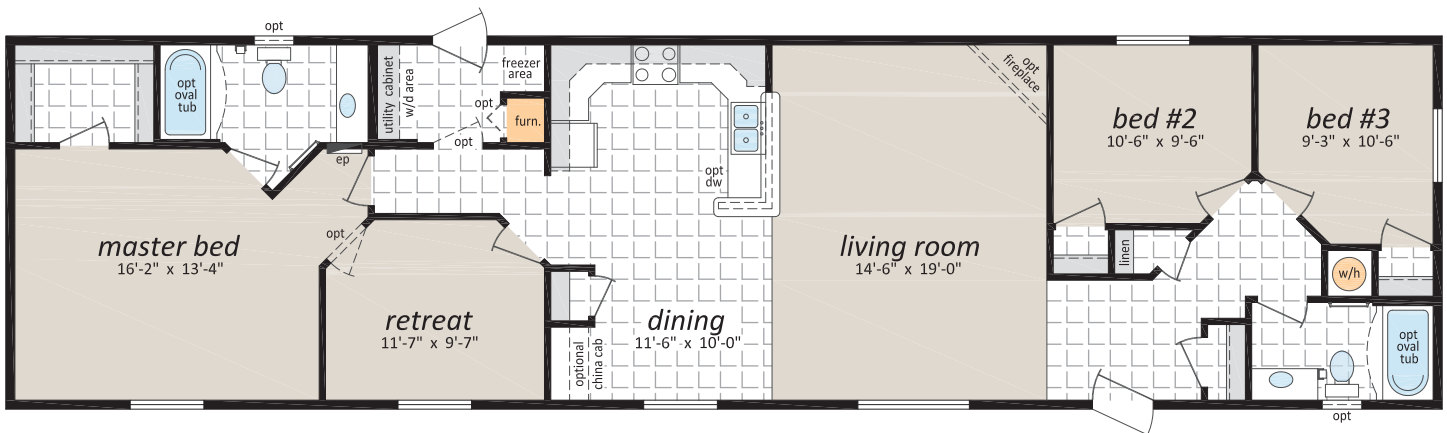
3 Beds, 2 Baths



AVS-20628

20' x 76' 1,520 sq. ft.

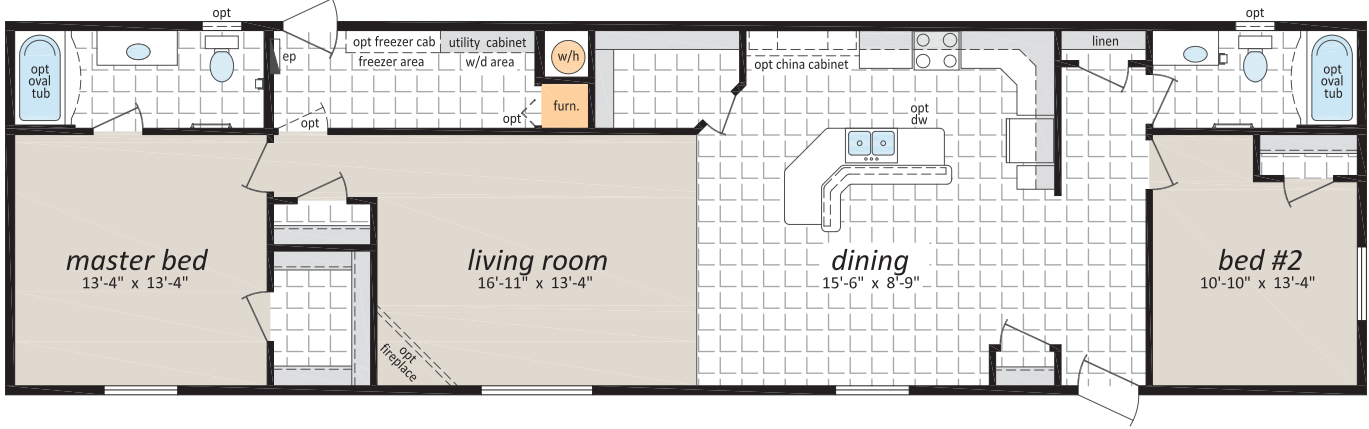
3 Beds, 2 Baths, Retreat



AVS-20629

20' x 72' 1,440 sq. ft.

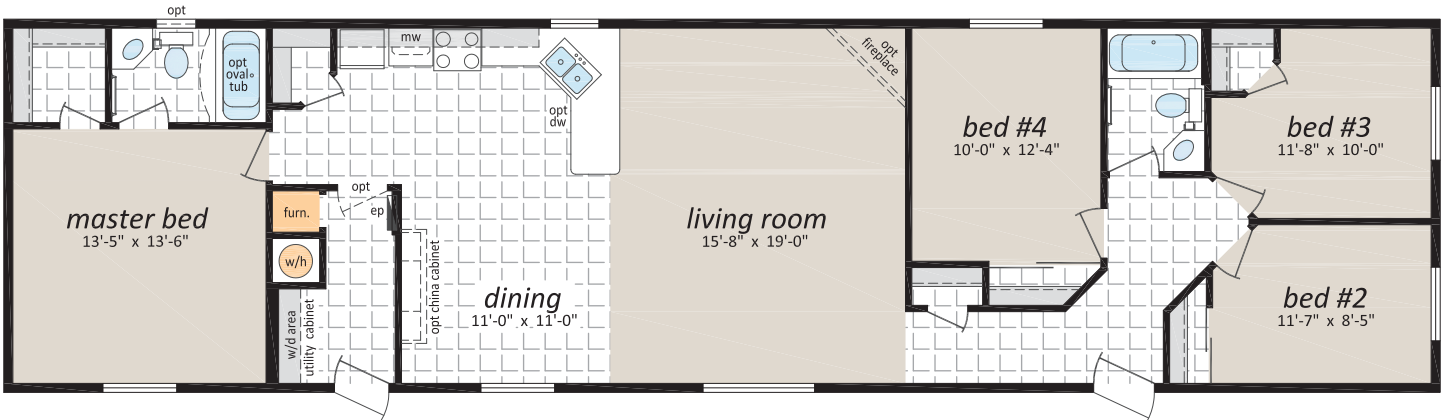
2 Beds, 2 Baths



AVS-20630

20' x 76' 1,520 sq. ft.

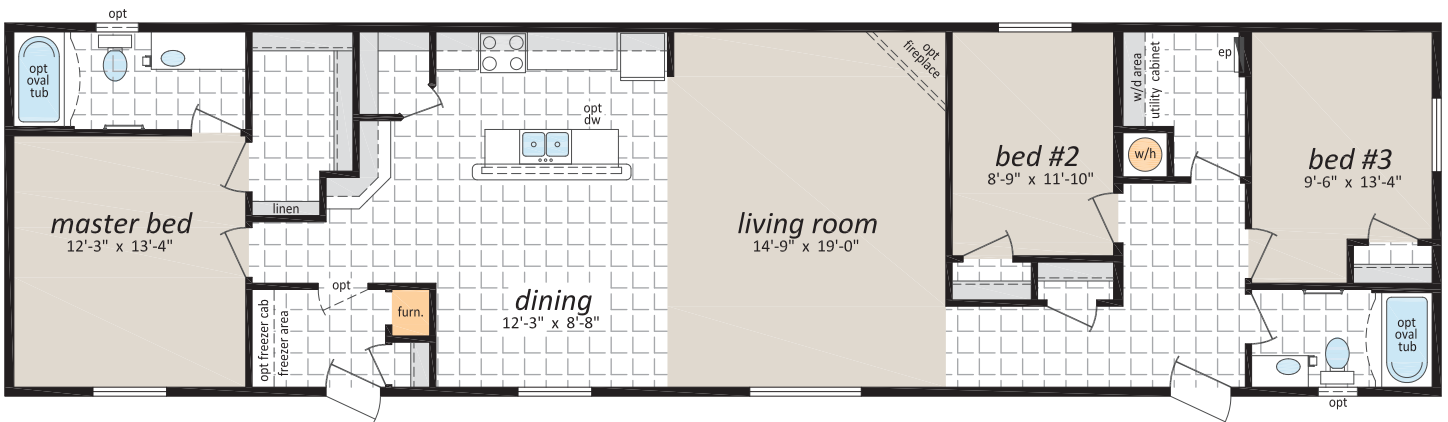
4 Beds, 2 Baths



AVS-20631

20' x 76' 1,520 sq. ft.

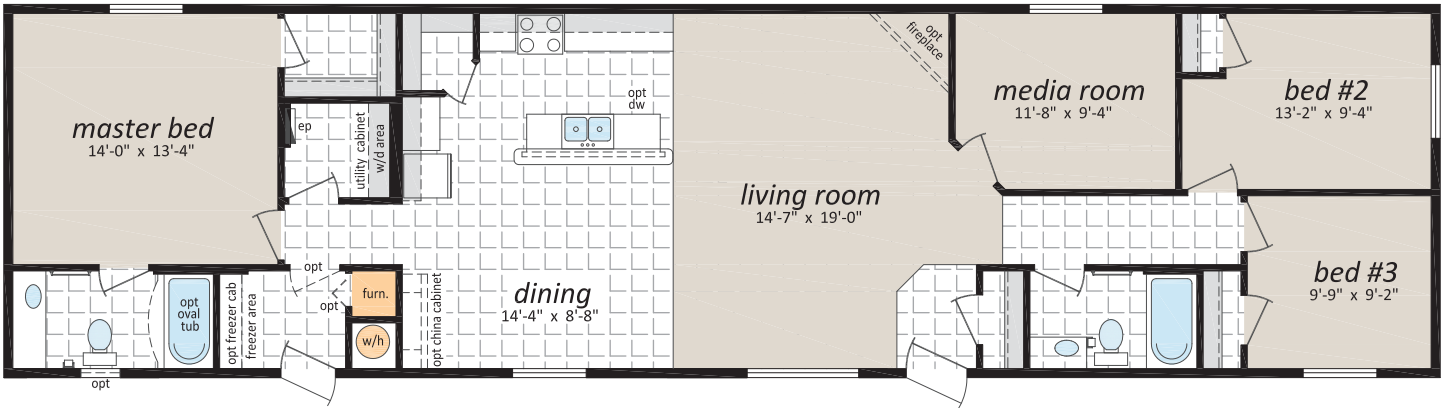
3 Beds, 2 Baths



AVS-20632

20' x 76' 1,520 sq. ft.

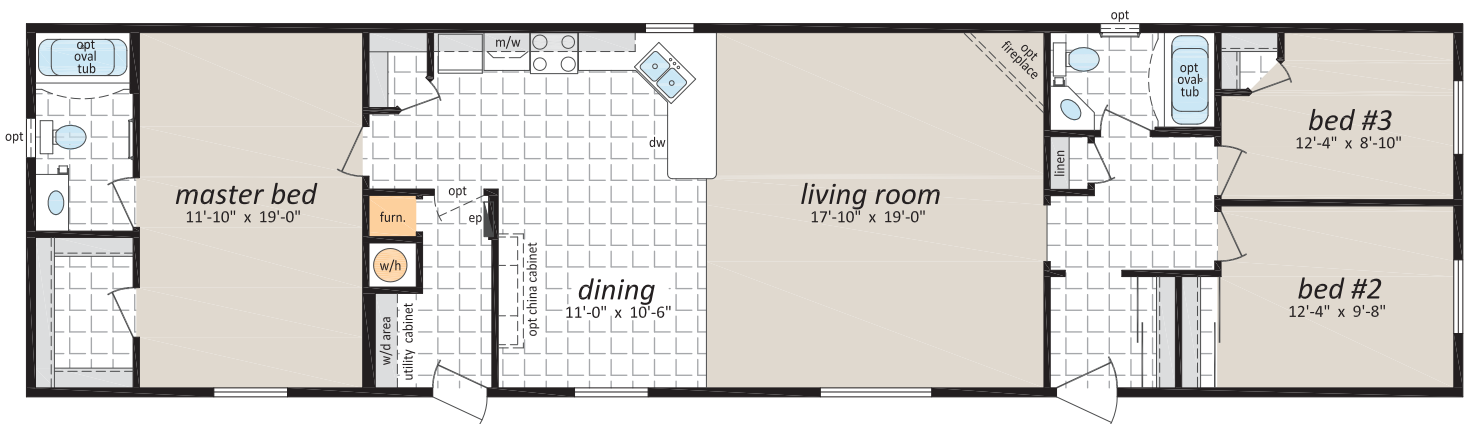
3 Beds, 2 Baths, Media Room



AVS-20633

20' x 76' 1,520 sq. ft.

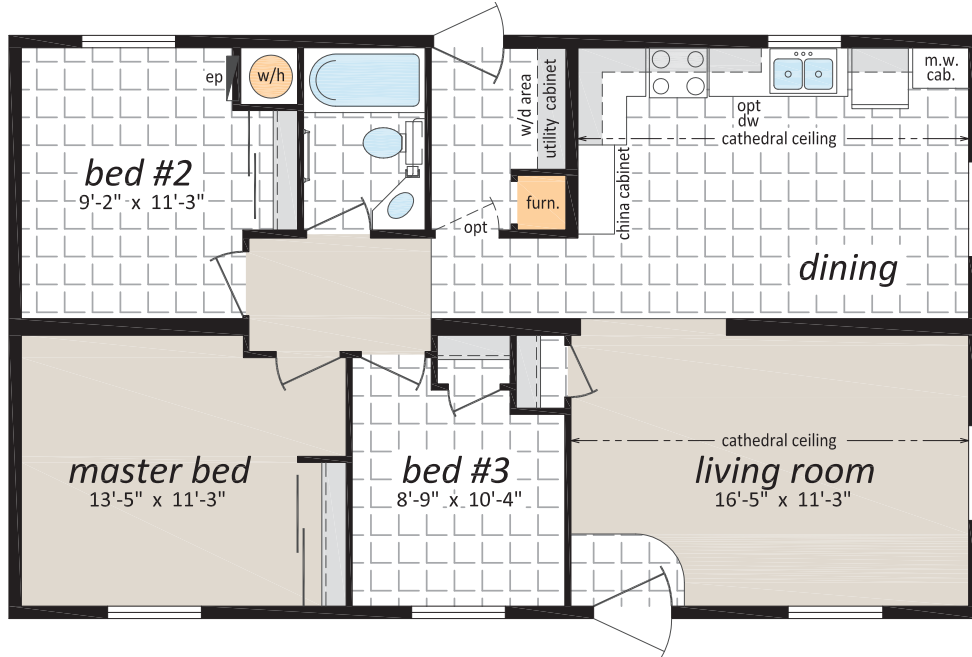
3 Beds, 2 Baths



ST-456

24' x 40' 960 sq. ft.

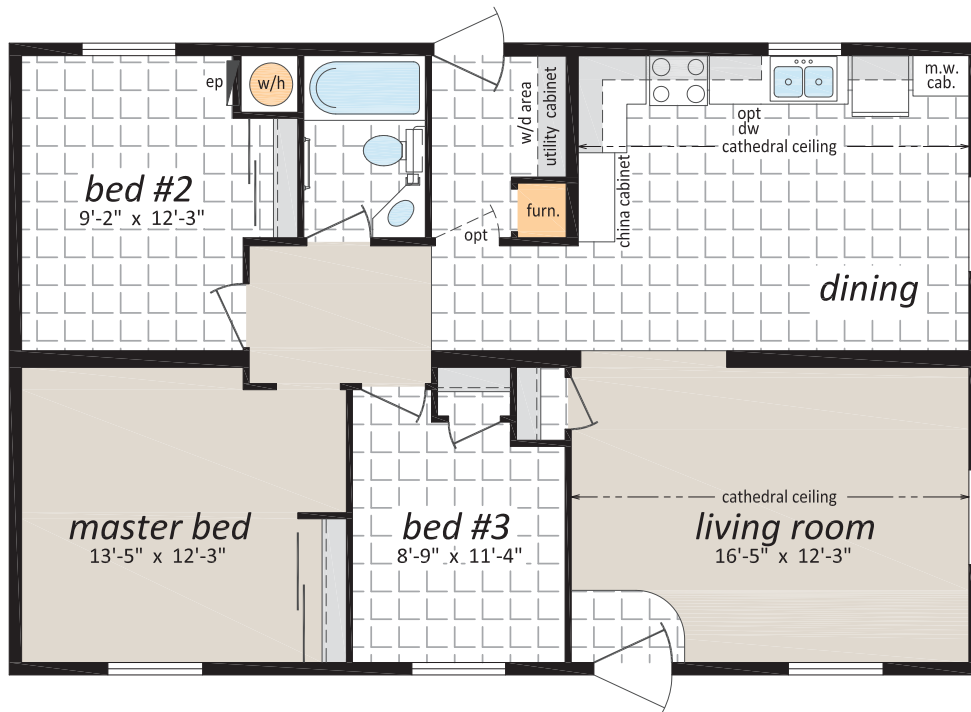
3 Beds, 1 Bath



ST-457

26' x 40' 1,040 sq. ft.

3 Beds, 1 Bath



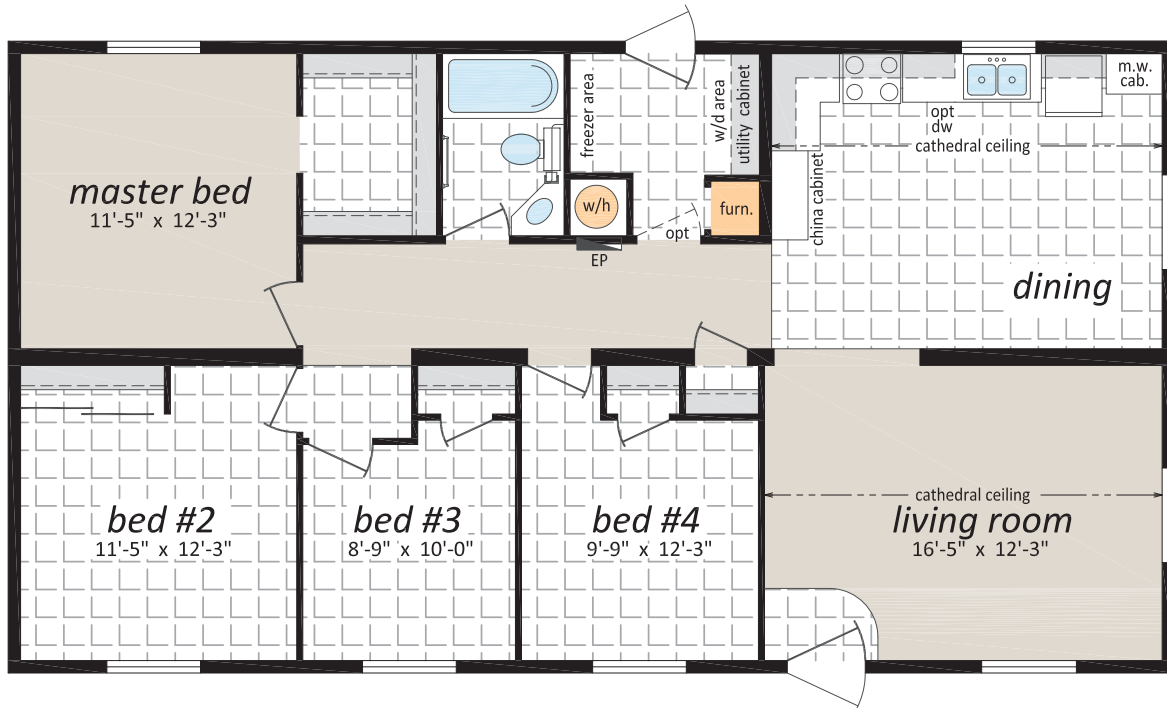
ST-458

26' x 48' 1,248 sq. ft.

4 Beds, 1 Bath



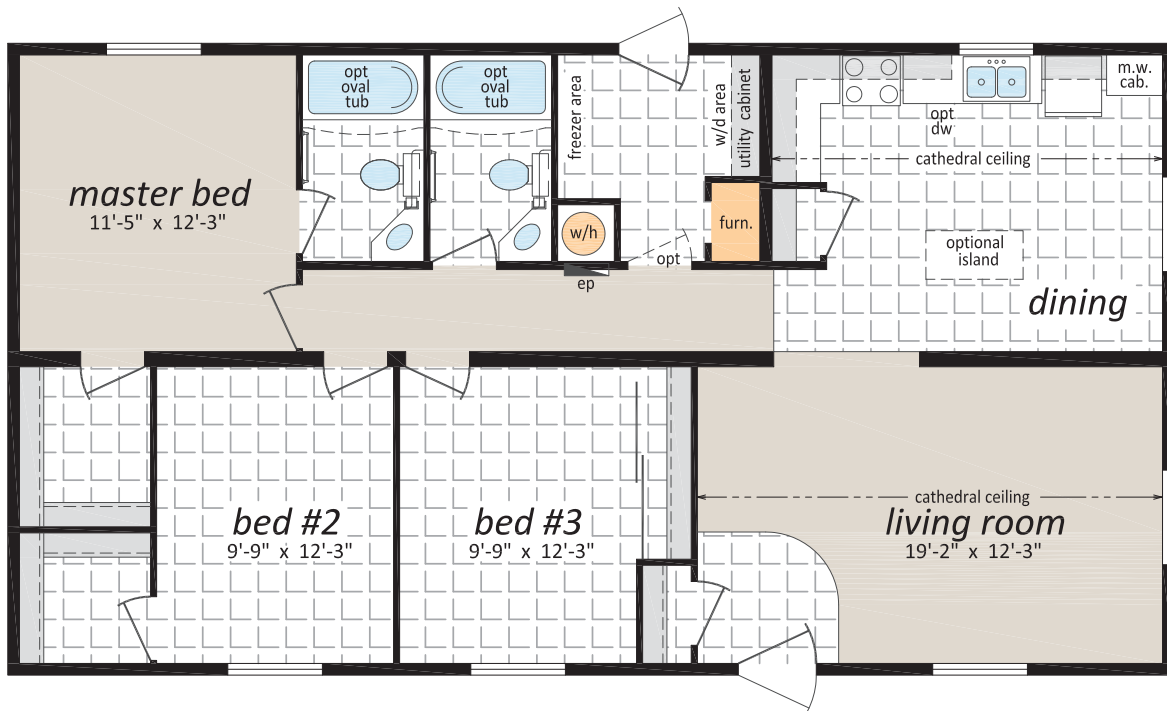
Artist Rendering;
may show optional features



ST-460

26' x 48' 1,248 sq. ft.

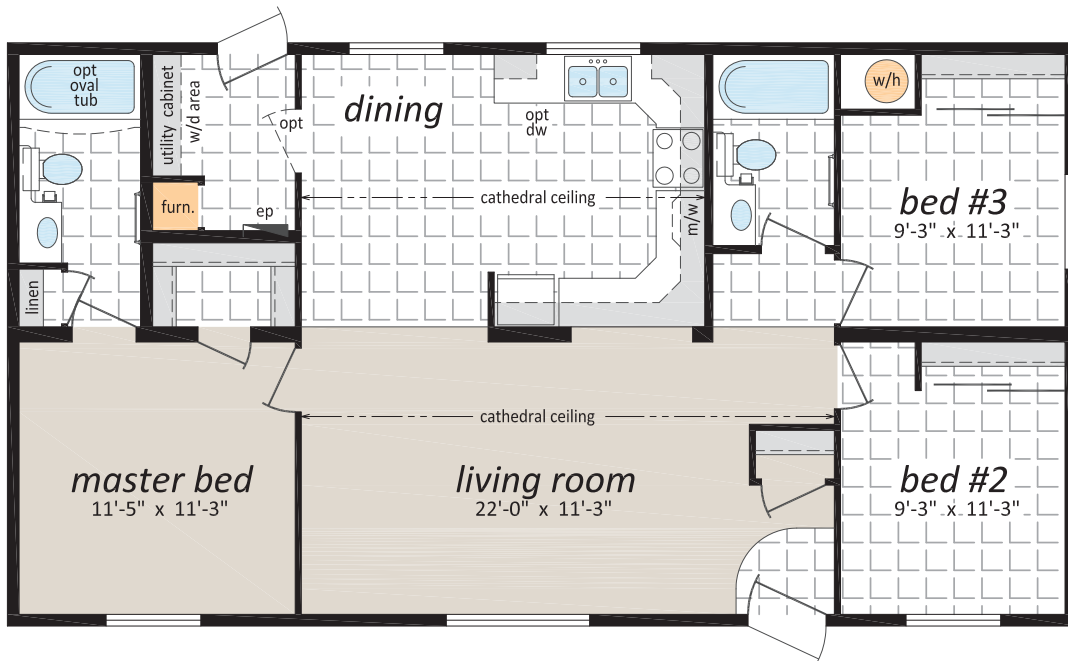
3 Beds, 2 Baths



ST-461

24' x 44' 1,056 sq. ft.

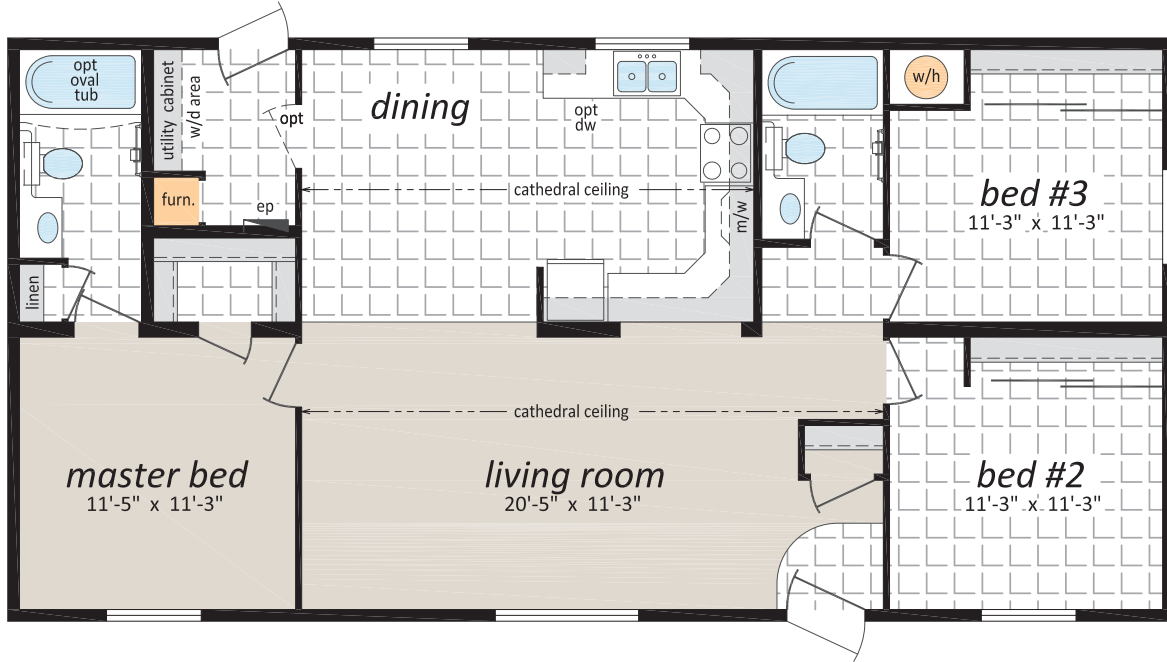
3 Beds, 2 Baths



ST-462

24' x 48' 1,152 sq. ft.

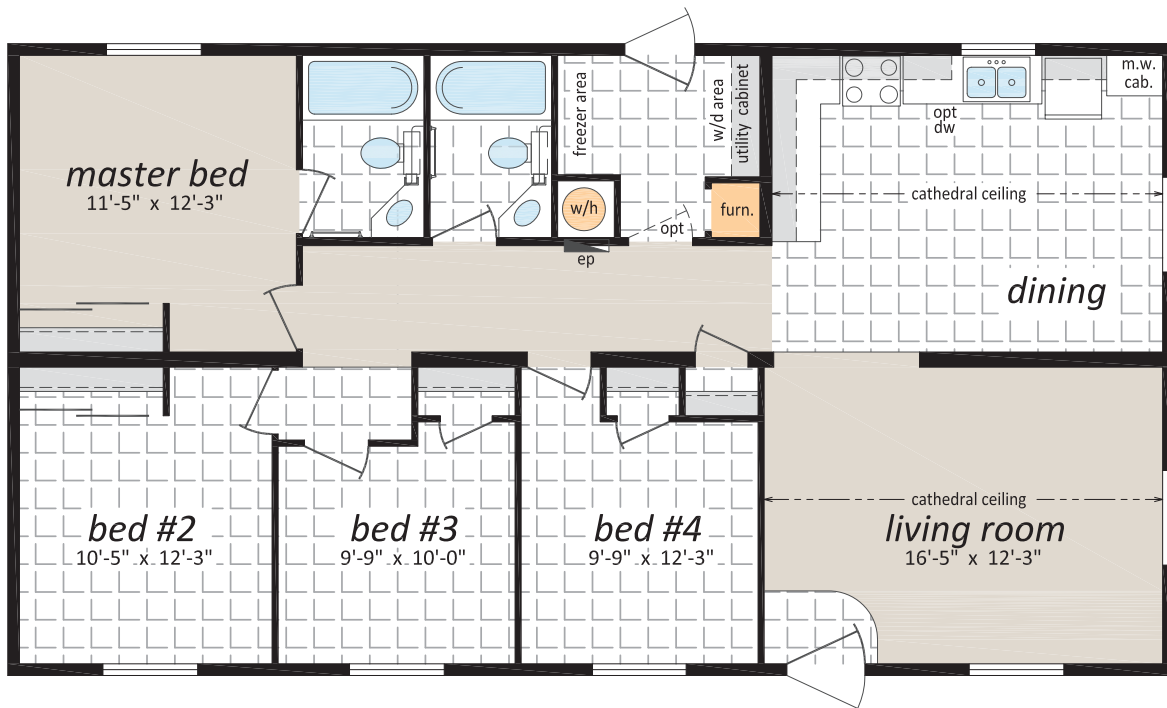
3 Beds, 2 Baths



ST-463

26' x 48' 1,248 sq. ft.

4 Beds, 2 Baths

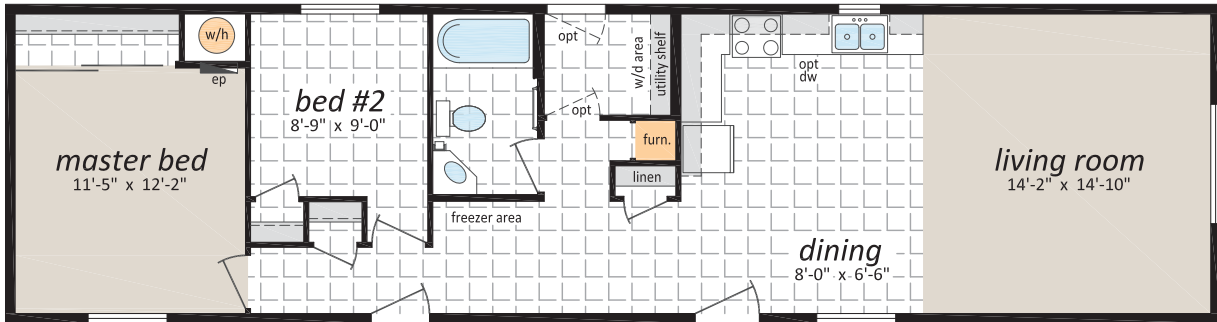




PR-1001

16' x 60' 960 sq. ft.

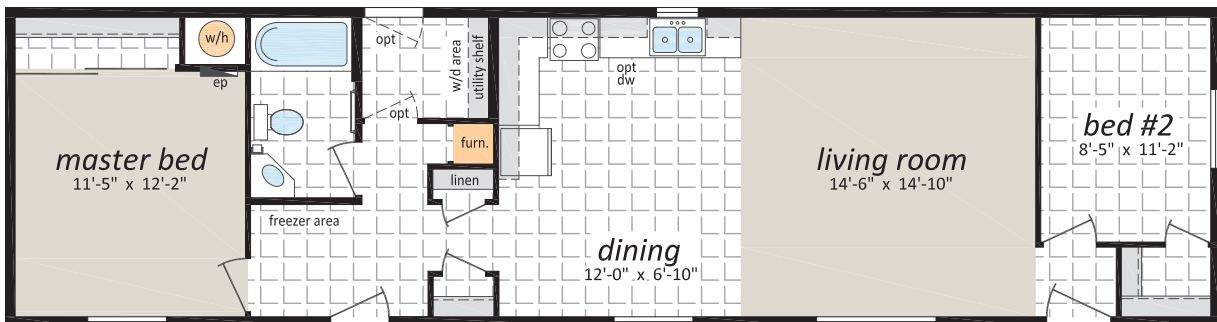
2 Beds, 1 Bath



PR-1002

16' x 60' 960 sq. ft.

2 Beds, 1 Bath

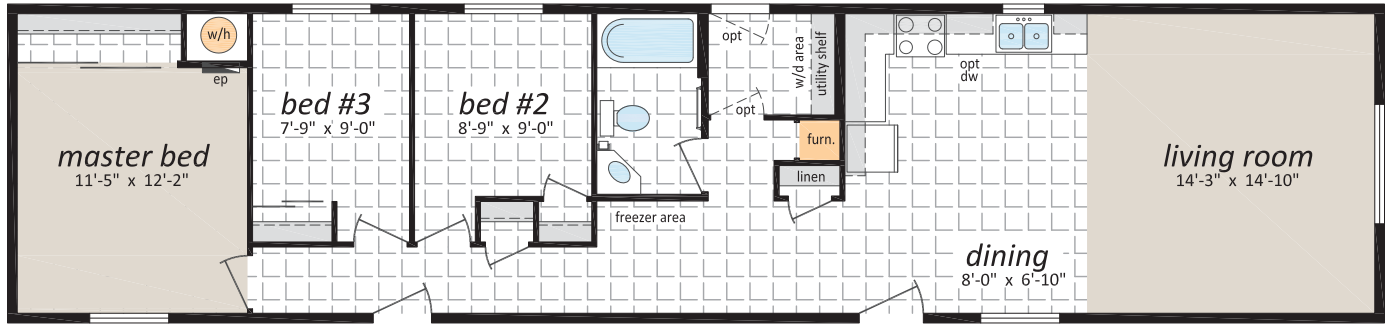




PR-1003

16' x 68' 1,088 sq. ft.

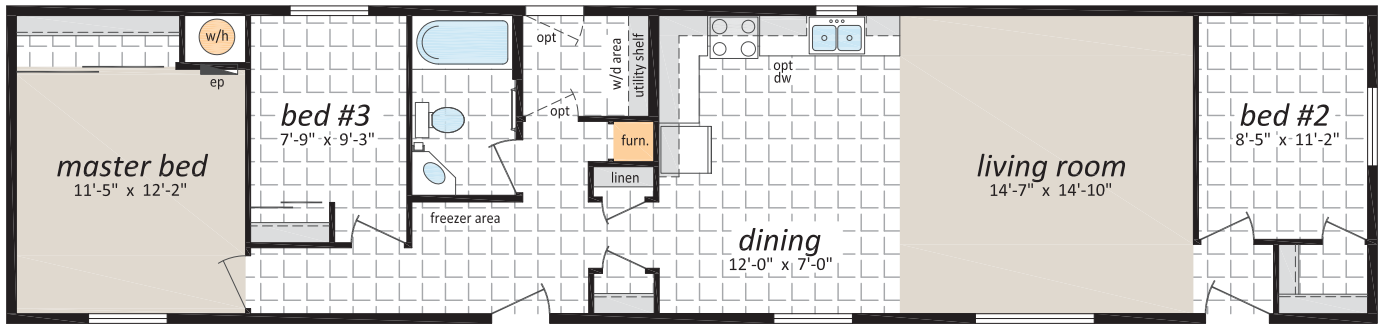
3 Beds, 1 Bath



PR-1004

16' x 68' 1,088 sq. ft.

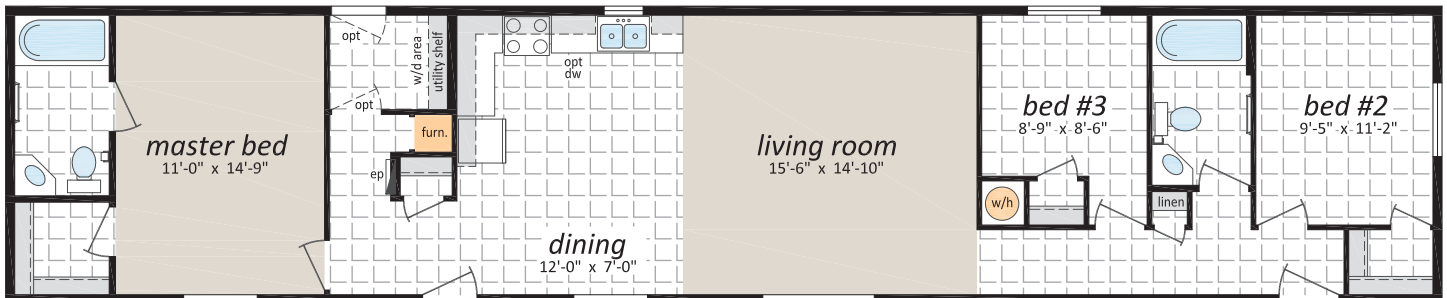
3 Beds, 1 Bath



PR-1005

16' x 76' 1,216 sq. ft.

3 Beds, 2 Baths



Optional Features

Exteriors

- Three Light Bay Windows
- Exterior Third Gables
- Patio and Garden Doors
- Vinyl Shutters
- Exterior Door with Half Round or 9 Lite Insert
- Vinyl Shakes in Gable
- Sequoia Select Upgrade Vinyl Siding
- Turbine Vents
- Extra Exterior GFI
- High Snow Load
- Smart Start Fascia, Corner and Pillars
- Skylights

Bathroom

- Ceramic Tile Backsplash
- Jetted Oval Tub
- Jetted One Piece Tub and Shower
- 60" Shower c/w Glass Doors
- Handicap Toilet
- Grab Bars

Kitchen

- Single Lever Faucet with Vegetable Sprayer
- Self Cleaning Oven
- Built-In Dishwasher
- Combination Microwave/Range Hood
- Under Cabinet Lighting
- Upgrade High Definition Laminate Countertops

Utilities

- Air Conditioner-Ready Furnace
- Extra Telephone/Cable Boxes
- Utility Room Door with Grill
- Electric Furnace
- 40 Gallon Electric Water Heater
- Washer and Dryer
- Stacking Washer and Dryer
- 200 Amp Service Panel
- Handi-Hite Bottom Mount Refrigerator
- Central Vacuum System
- Roughed in for Central Vacuum
- Extra Telephone Jacks
- Surge Protector

Interiors

- Painted Drywall
- Cathedral Ceiling
- Laminate Flooring
- Carpet in 2nd and 3rd Bedroom(s)
- French Doors
- Classique White Raised Panel Passage Doors
- Freezer Cabinets
- Deluxe Drapery Package #2
- Pewter Drapery Package
- Decora Switch Package
- Solid Wood Trim
- 2" PVC Blinds
- Programmable Thermostat

Check off your extras ...

... and we will take care of the rest!



Statesman Home Series



Authorized Retailer:



Canadian
Home Builders'
Association



P.O. Box 845 #200 Hwy 18 West
Estevan, SK S4A 2A7
www.shelterhomes.ca

Follow us: 